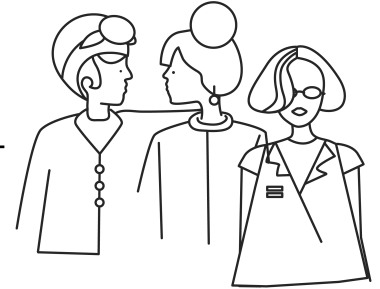


## **ADMISSION**

- Predictive analytics - courses & scholarships
- Build student profiles for streamlined applications



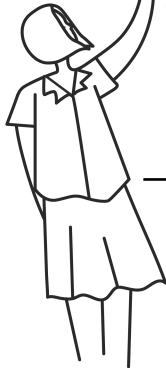
## **ORIENTATION**

- Socialisation for more rewarding tertiary education experiences
- Reduce drop-out risk



## **LEARNING**

- Tailored learning
- Digital content analytics to improve course quality



## **ALUMNI**

- Visible career trajectories and employment opportunities
- Develop and manage alumni networks

