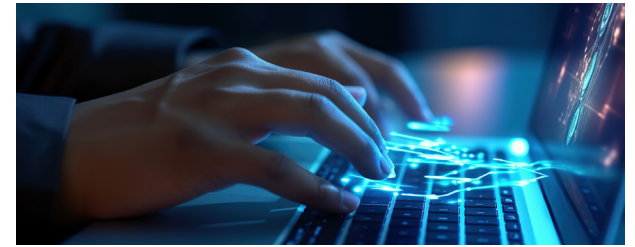




The Ministry of Commerce and Industries ("MICI") will launch a new digital platform for Multinational Companies' procedures.



The MICI recently announced the implementation of a single window that will operate digitally, to facilitate the application process for visas under the Multinational Company Headquarters Regime ("SEM" in Spanish) and the Special Regime of Multinational Companies for the Provision of Manufacturing-Related Services ("EMMA" in Spanish).

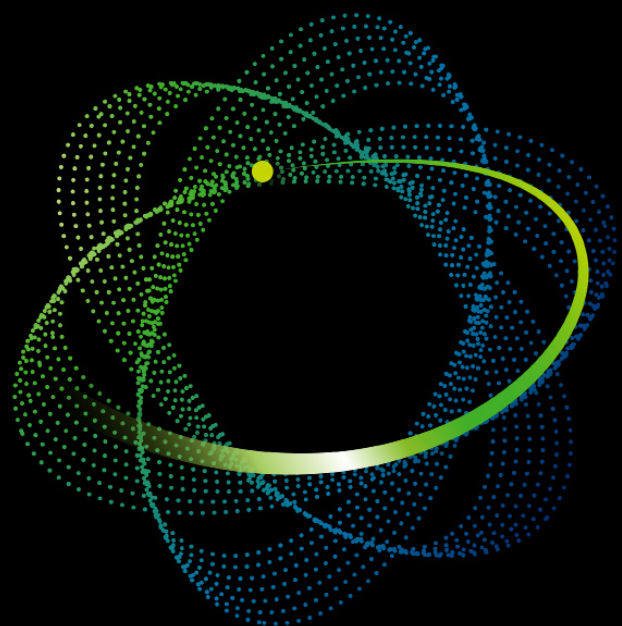
The platform will manage all immigration procedures for SEM companies, in order to facilitate the process and administrative management.

It is important to note that once the platform is implemented, there will be no physical procedures.

Global news, local views
Deloitte tax@hand newsfeed

Download the mobile app





Contacts

Michelle Martinelli

Partner Tax & Legal
mmartinelli@deloitte.com

Tania Aguilar

Senior Manager Tax
tanaguilra@deloitte.com

Marissa González Ruíz

Manager Tax & Legal
mgonzalezruiz@deloitte.com

Yira Cobos

Partner Tax
ycobos@deloitte.com

Juan Fábrega

Senior Manager Tax & Legal
jufabrega@deloitte.com

Marilyn Fernández

Manager Tax
marifernandez@deloitte.com

Desiree Esáa

Partner Tax & Foreign Trade
desaa@deloitte.com

Katiushca Navarro

Manager Tax
kanavarro@deloitte.com



Deloitte refers to Deloitte Touche Tohmatsu Limited, a UK private limited liability company, its network of member firms and their related entities, each as a single and independent legal entity. See www.deloitte.com for more information on our global network of member firms.

Deloitte provides professional audit and assurance, consulting, financial advisory, risk advisory, tax and legal services related to our public and private clients from various industries. With a global network of member firms in more than 150 countries, Deloitte provides world-class capabilities and high-quality service to its clients, bringing the expertise needed to address the most complex business challenges. Deloitte's more than 330,000 professionals are committed to making a significant impact.

As used in this document, Deloitte Inc., which has the exclusive legal right to engage in, and limit its business to, the provision of auditing, consulting, tax consulting, legal, risk and financial advisory services respectively, as well as other professional services under the name of "Deloitte".

This presentation contains general information only and Deloitte is not, by means of this document, rendering accounting, business, financial, investment, legal, tax or other advice or services. This presentation is not a substitute for such professional advice or services, nor should it be used as the basis for any decision or action that may affect your business. Before making any decision or taking any action that may affect your business, you should consult a qualified professional adviser. No representation, warranty or promise (either express or implied) is given as to the accuracy or completeness of the information in this communication and Deloitte shall not be liable for any loss suffered by anyone who relies on this presentation.