

**Deloitte.**



## ScreenNow

Our technology  
solution for the  
sanction screening





# ScreenNow

## Just stay compliant

### Our technology solution

The unique solution was created as a result of the work of experts in the area of Risk Advisory, Compliance and ServiceNow solutions.

ScreenNow is designed to fully cover **Sanction risk** for the Client. **Sanction lists** are integral part of the solution, enabling our Clients to apply measures appropriate for their business. The tool provides full information regarding the match in order to present the whole picture. ScreenNow allows easy customization of the screening criteria, depending on the volumes of false positives.

ScreenNow is suitable both for manual and batch screening, fitting all the needs Clients might have. Whether it is during onboarding, alert handling or simply a routine review of the customer base – ScreenNow will be able to swiftly sort through the data provided.

Any changes made to Sanction lists will be reflected in ScreenNow and will automatically trigger screening of Client's customer base. Automation of this area guarantees that Clients continuously stay compliant and is protected against reaching the sanction.

The solution is based on the ServiceNow technology and fuzzy matching technology provided by Deloitte big data engineers and AI experts.



#### Regular Data Collection

Collects a set of sanction lists from government and authorities websites/APIs\* every day.



#### Search API

API integration for the client platforms to run fuzzy queries against the database.



#### Application Extensibility

Additional Sanction Lists can be incorporated to the application without modifications to the core product.



#### Data Processing & Maintenance

Identifies changes, additions and deletions made to the sanction lists. Database is updated on a daily basis.



#### Data Transformation

Ingests data from multiple formats to the database and standardizes the different sanction lists.

# ScreenNow Workflow

## Case management

### INNOVATIVE & TRUSTWORTHY SOLUTION

01

Comprehensive audit trail

02

Simple integration of the solution

03

Database updated on a regular basis

1

#### Case creation on portal

By uploading batch file delivered by the Customer

By entering data from database

2

Checking white / black list and custom lists

3

Integration with the engine (queries sanction lists)

4

Review and decision on the results

5

Escalation process

6

Report generation and possibility to reopen Cases

7

Closure activities

Aggregating results which need to be skipped in the future searches

Adding Customers to internal PEPs list

#### SERVICENOW DATABASE CREATION

Adding Customers manually

Uploading excel file

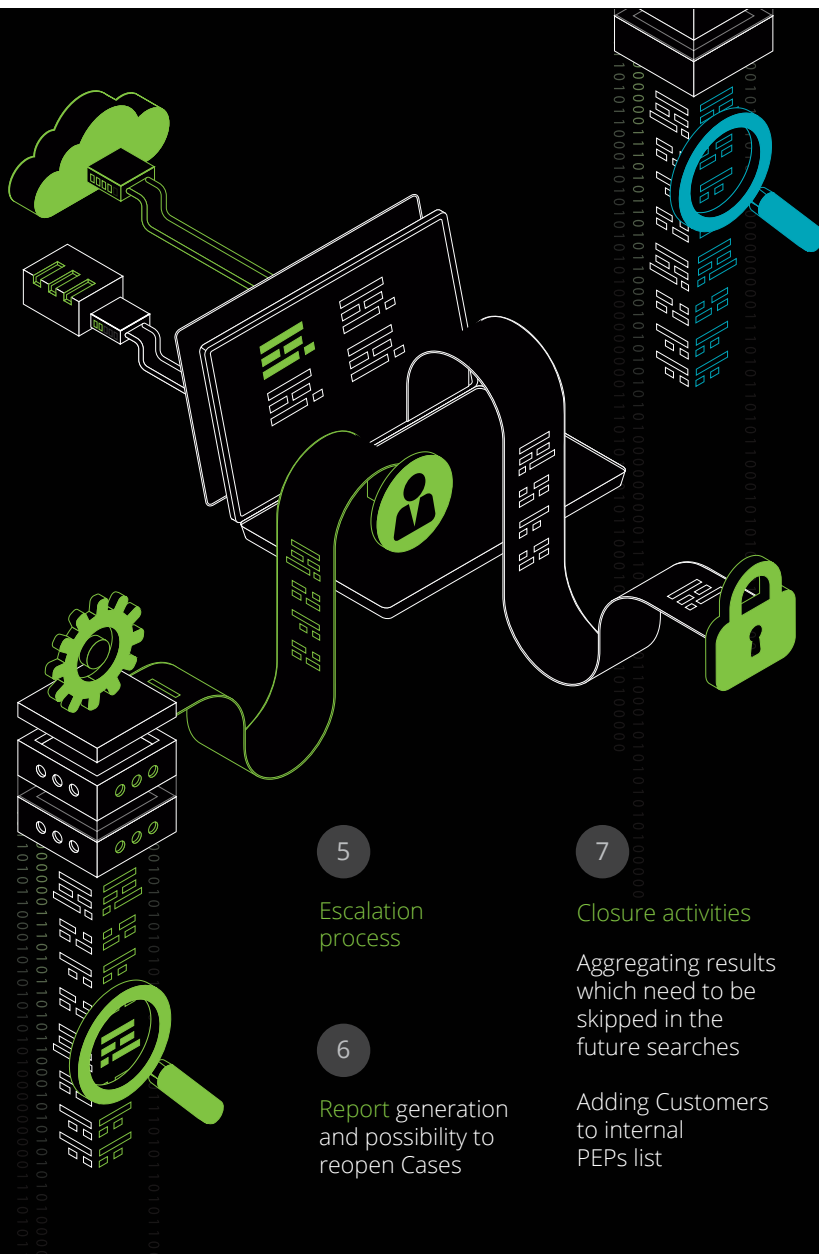
Making integration with Customer internal system with Clients data to connect with ServiceNow database

#### ONGOING SCREENING

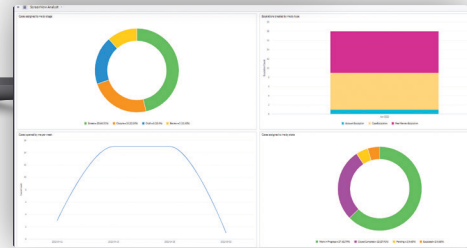
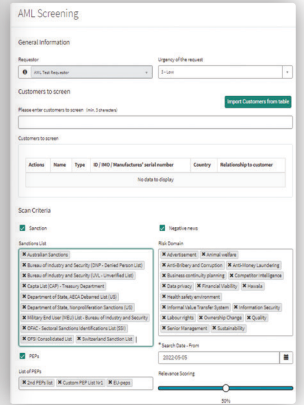
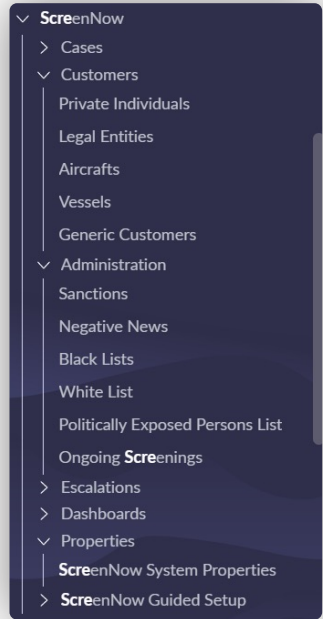
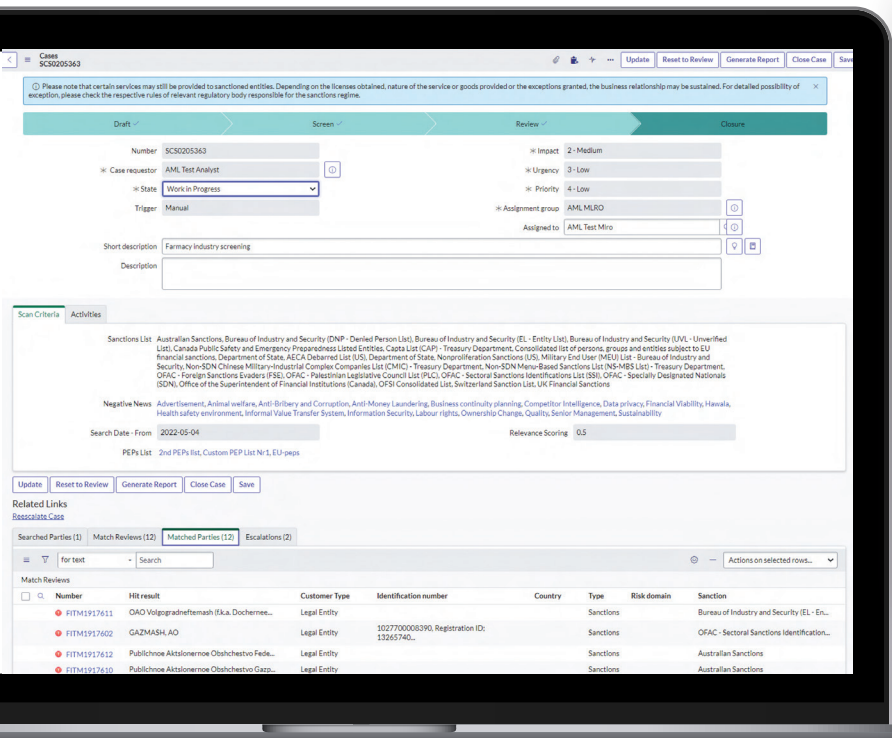
Add Customer to Screen from database

Choose sanction list

Execute now, scan all or schedule in specific time



# What makes ScreenNow special?



## MOST WANTED

### Ongoing sanction screening

The main functionality of our solution, which ensures the provision of on-going sanction screening process. The frequency of screening will be adapted to your risk exposure and appetite

### Batch screening

Functionality that allows adhoc checking of the customer base in one file. Regardless of the number of records to be screened, the tool ensures smooth and efficient screening.

### Manual screening

The functionality of the application which enables to check a single client and identify connections between the customer and data stored in the application in order to determine possible links with the sanctioned entity and mitigate the risk.

All above-mentioned functionalities are included in the pricing

# What makes ScreenNow a software of your choice



**Fast adjustment to the new sanctions**  
Quick reaction, usually up to 24h since new sanction has been adopted by the authorities, which is a standard timeframe at the market



**IT support**  
Our approach to application implementation and maintenance ensures swift deployment and stable operations but also leaves room for custom requirements to maximize the value generated by ScreenNow



**Easy to tailor per a customer's preference and needs**  
Different modes of screening (ad hoc, ongoing real time, batch, full automat), possibility of deployment of any lists required by a local regulator and internal lists (grey lists, sensitive lists)



**Competitive pricing scheme**  
The number of records to be screened does not affect the price (unlimited); three functionalities (ongoing, batch and manual screening) included in the solution price



**Subject Matter Experts ongoing support**  
A dedicated team of experts to assist in complex cases



**Innovative matching technology**  
An in-house created and tested fuzzy matching algorithm, number of false positives decreased tremendously



**Capacity and time**  
Fast screening of large numbers of records

# Our compliance solution ..we can offer you even more

## FINANCIAL CRIME TEAM SUPPORT

Assistance with identifying all parties in a customer's and contractor's portfolio

Advice on financial transactions compliance

US extraterritorial impact on business

## IT TOOLS IMPLEMENTATION

Implementation of compliance management solution (ScreenNow)

Product classification tools (AI and cloud solutions)

Compliance requirements for ERP systems, sensitive data storage and sharing platforms

Outsourcing service of sanction screening monitoring/ alert review

Independent testing of sanction monitoring programme

## INVESTIGATIONS

Investigations for potential violations

Transactional and business partner data review

Review of sanctions compliance issues

## INTERNAL COMPLIANCE MANAGEMENT

Internal compliance programme building

Governance and operational model

Sanctions compliance policy

Procedures, working guidelines and tools

Preparing and conducting awareness sessions/ trainings

Independent sanction risk program assessment

## REVIEW OF CONTRACTORS' AND CUSTOMERS' PORTFOLIO

Overview of the current base of suppliers who provide this type of service to companies

Overview of clients (companies to which products/ goods/ services/ financial products are sold)

# Key contacts

Reach us and ask about the approach tailored to your company.



**Monika Strzelecka**  
**Senior Manager**  
**Deloitte Risk Advisory**

+48 666 088 562  
mstrzelecka@deloittece.com



**Andrzej Kępa**  
**Manager**  
**Deloitte Risk Advisory**

+48 223 483 681  
akepa@deloittece.com



**Marcin Sitarz**  
**Director**  
**Deloitte Consulting**

+48 880 529 049  
msitarz@deloittece.com



Deloitte Central Europe is a regional organization of entities organized under the umbrella of Deloitte Central Europe Holdings Limited, the member firm in Central Europe of Deloitte Touche Tohmatsu Limited. Services are provided by the subsidiaries and affiliates of, and firms associated with Deloitte Central Europe Holdings Limited, which are separate and independent legal entities. The subsidiaries and affiliates of, and firms associated with Deloitte Central Europe Holdings Limited are among the region's leading professional services firms, providing services through nearly 11,000 people in 39 offices in 19 geographies.

This communication contains general information only, and none of Deloitte Touche Tohmatsu Limited („DTTL“), its global network of member firms or their related entities (collectively, the “Deloitte organization”) is, by means of this communication, rendering professional advice or services. Before making any decision or taking any action that may affect your finances or your business, you should consult a qualified professional adviser.

No representations, warranties or undertakings (express or implied) are given as to the accuracy or completeness of the information in this communication, and none of DTTL, its member firms, related entities, employees or agents shall be liable or responsible for any loss or damage whatsoever arising directly or indirectly in connection with any person relying on this communication. DTTL and each of its member firms, and their related entities, are legally separate and independent entities.