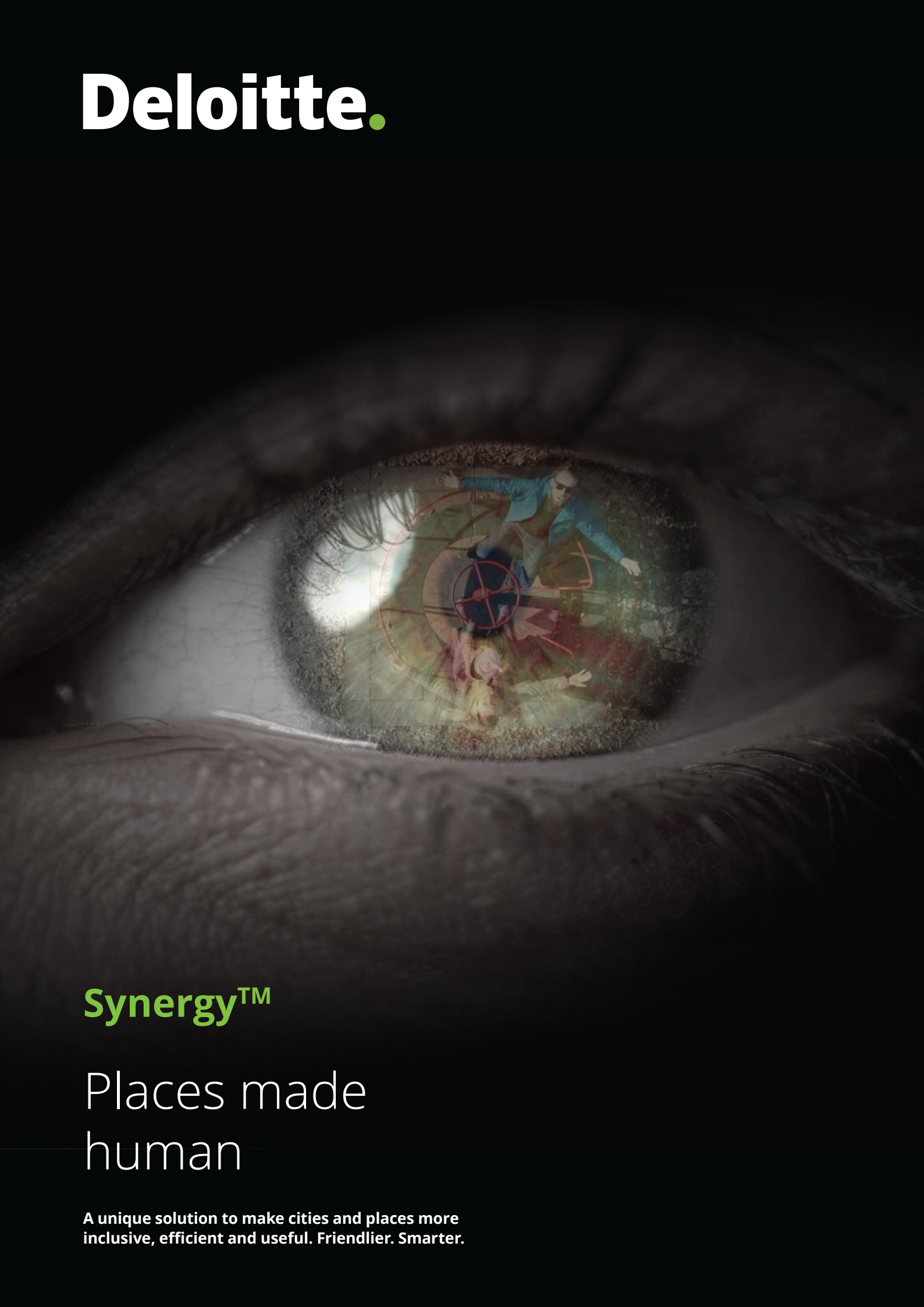


Deloitte.



Synergy™

Places made
human

A unique solution to make cities and places more
inclusive, efficient and useful. Friendlier. Smarter.

Friendlier, smarter, and more inclusive



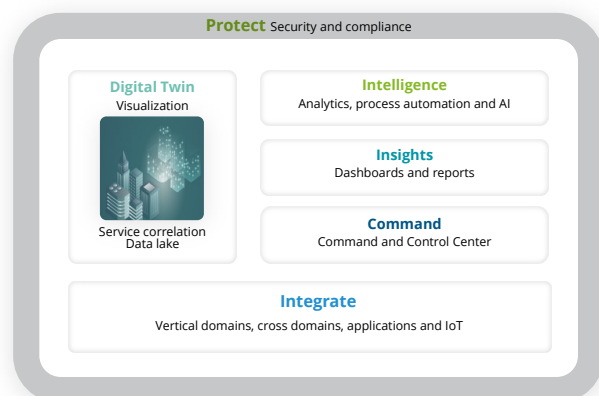
Synergy is a unique solution that puts humans at the center of everything.

Synergy makes places more human.

From the places we live and work to the way we have fun, learn, and grow old, Synergy connects people and places with a human approach using psychology and service design to unleash the potential of technology and data.

Synergy solution

A unique solution offering end-to-end integration of all the critical factors, shaping the future of cities and places. Synergy is flexible, agile, scalable, and modular to address the different needs of an integrated infrastructure management.



It combines the capabilities of a powerful digital twin, data-driven & predictive insights, and allows process automation.



Digital Twin

Leverages real-time data and modelling to find optimal conditions for reinvention and growth.



Insights

Makes informed decisions and finds opportunities for change supported by your data.



Automation

Finds ways to optimize and improves the efficiency of routine operations at the center of peoples' needs.

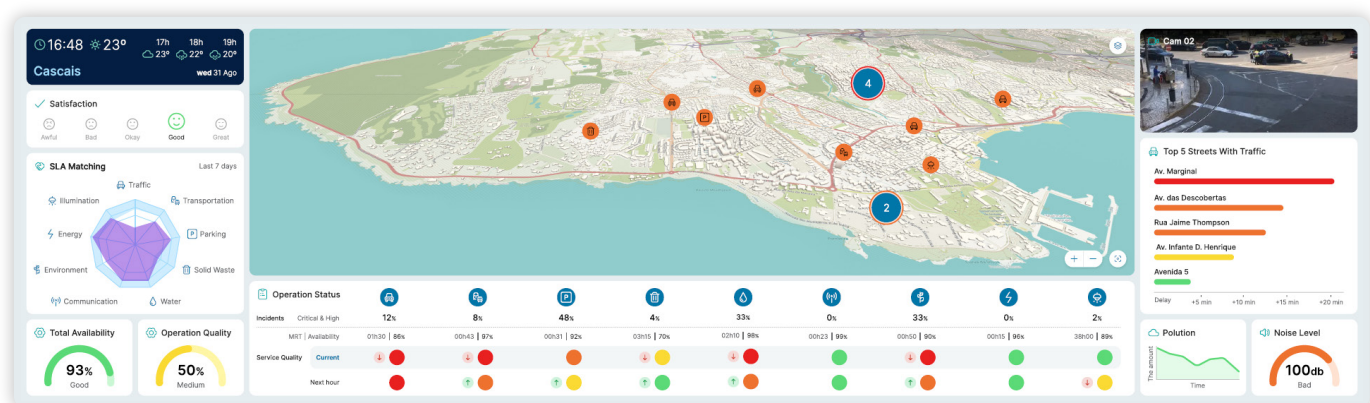


Orchestration

Integrates and correlates data from various sources, aligns teams, and processes for greater coordination.

Synergy™ by Deloitte

Synergy is built around a set of tools enabling the integrated management of cities and places.



Integration platform

Integrating multiple cities & places domains under a single platform.

Executive dashboard

Visualizing real-time data from multiple sources for operators and decision-makers.

Command center

Providing centralized control across all operations.

Digital Twin

Analyzing and modelling resource dependencies.

Intelligent urban management

A holistic approach to governance across city services and urban planning leads to more effective service delivery, better resource management, and ultimately - cities we all want to live in.

As cities implement more technology-based services, they need a unified vision across domains.

Redefining the operational models of cities through integration, ensuring a higher quality of services for residents, and savings based on efficiency.



**LEADING
WITH SYNERGY**

Synergy is impacting the life of **200.000** people in Portugal and **30M** in the Middle East.

Making distances feel closer

Effective mobility management allows urban citizens to move freely, enables better use of public spaces and minimizes pressure on transit infrastructure.

Through better coordination of innovation, cities that experience massive urbanization will minimize congestion, improve the citizens' experience, and meet their future mobility goals.

There is a growing need for cities to move towards seamless and sustainable transportation systems. Promoting use of shared mobility and public transport reduces emissions and protects public spaces for citizens.



**MOVING
WITH SYNERGY**

Synergy is improving the commute of **600.000** people in Lisbon and Cascais.

Providing a workplace that works for you

Workplaces and districts are changing to become more sustainable, accessible, and livable. Buildings need to be designed and built with a focus on the experience and well-being of the people who use them.

Buildings are responsible for up to 40% of urban carbon emissions. Beyond energy conservation, finding the optimal use of space can improve the quality of life of the people who inhabit them.

Intelligent technologies work together to orchestrate a vision of smart buildings and districts where businesses, people and the environment can thrive.



**WORKING
WITH SYNERGY**

Synergy is impacting **4.000.000** people in Smart Districts in Portugal and Greece, among others.

Turning moments into memorable experiences

Re-imagining how major event operation centers function to provide the best experience for all participants, by pushing towards the development of a single main operating center.

By placing people at the center, from venue design to the implementation of significant use-cases, a concerted effort is being made to modernize Sports and Major Events into a new generation of integrated operations and fans entertainment.



HAVING FUN
WITH SYNERGY

Synergy is improving the experience of **620.000** fans.

Live life to the fullest

Our aging population has a desire to live independently while getting the care and attention necessary to maintain their health and well-being.

Smart living spaces address the need to bolster caregiver resources already dedicated to elder care. With intelligent technology powering inclusive services, seniors can maintain their independence with peace of mind.

A platform to provide real-time care services built into living spaces monitors movement, air quality, and energy use and alerts caregivers when a threat to the resident's health or wellbeing occurs.



AGING
WITH SYNERGY

Synergy is helping **40** Silver Generation homes in partnership with the Red Cross.

Enhancing places of learning

Today's youth are digital natives who grew up experiencing technology meant to enhance and improve their lives. As they reach levels of advanced education, they expect an optimized environment for study and work.

University and college campuses are evolving to meet this demand, creating campuses powered by intelligence and smart technology.

On-campus business processes and campus operations centers are transforming the look and feel of universities and colleges.



LEARNING
WITH SYNERGY

Synergy is enhancing the experience of **20.000** students at a leading University.

Get in touch

Meet the team at Deloitte helping to make places more human.



Jean Gil Barroca
General Manager, Synergy
jbarroca@deloitte.pt



Ricardo Ferreira Martins
Business Development, Synergy
ricardofmartins@deloitte.pt



Sérgio Bruno Carvalho
Architect, Synergy
sercarvalho@deloitte.pt



Miguel Eiras Antunes
Smart Cities & Urban Transformation,
Global Leader
meantunes@deloitte.pt



**Explore
Synergy**

"Deloitte," "us," "we" and "our" refer to one or more of Deloitte Touche Tohmatsu Limited ("DTTL") member firms, and their related entities (collectively, the "Deloitte organization"). DTTL (also referred to as "Deloitte Global") and each of its member firms and related entities are legally separate and independent entities and, therefore, do not bind each other for all intents and purposes. Accordingly, each entity is only liable for its own acts and omissions and cannot be held liable for the acts and omissions of the other. Furthermore, DTTL does not provide services to clients. To learn more, please consult www.deloitte.com/about

Deloitte provides industry-leading audit and assurance, tax and legal, consulting, financial advisory, and risk advisory services to nearly 90% of the Fortune Global 500® among thousands of private companies. Our professionals deliver measurable and lasting results that help reinforce public trust in capital markets, enable clients to transform and thrive, and lead the way toward a stronger economy, a more equitable society and a sustainable world. Building on its 175-plus year history, Deloitte spans more than 150 countries and territories. To learn how Deloitte's 415,000 people worldwide make an impact that matters please consult www.deloitte.com.

This communication contains general information only, and neither Deloitte Touche Tohmatsu Limited ("DTTL") nor its global network of member firms or their related entities (collectively, the "Deloitte organization") is, by means of this communication, rendering professional advice or services. Accordingly, before deciding or taking any action that may affect your finances or your business, on the basis of this communication you should consult a qualified professional adviser. No representations, warranties or undertakings (express or implied) are given as to the accuracy or completeness of the information in this communication, and therefore neither the issuer, nor DTTL or its network of member firms, related entities, employees or agents may be held liable or responsible for any loss or damage whatsoever arising directly or indirectly in connection with any person relying on this communication.

