

Why do you need it?
Enterprise network automation

Why adopt automation in enterprise networks?

Automation on enterprise networks has grown interest throughout the years mainly due to increasing capacity, flexibility and reliability requirements that come from constantly growing business demands. Network automation helps to simplify network management, improve network reliability and increase network visibility.



More than 65% of activities that are performed in enterprise networks **are manual tasks**



33,6% of the respondents said that they **increased the use of automation tools** after the start of Covid-19 pandemic



Only 34% of network professionals **are satisfied** with the tools and processes used for network management

Main drivers



Improve network reliability
Real-time analysis of the KPIs helps to reduce network downtime



Improve security by reducing manual errors
Process automation reduces the possibility of security breaches



Improve incident response and reduce MTTR
Automation helps to optimize ticket handling, and an increased troubleshooting efficiency



Improve patch management tasks
Automation eases firmware updates reducing security vulnerability on the network



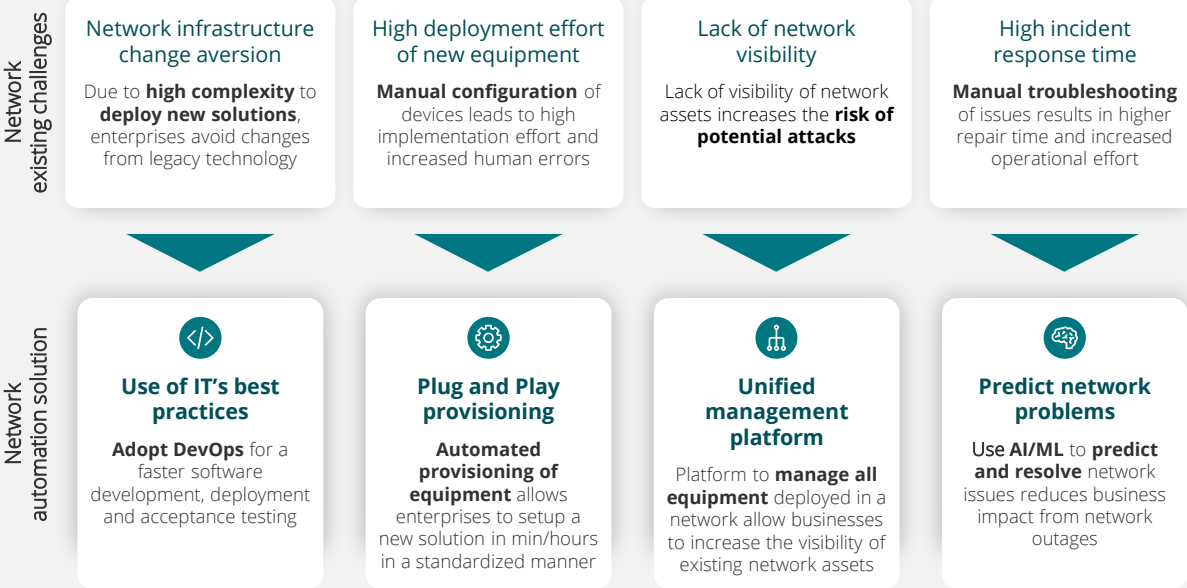
Faster network changes
Automated tasks and standardized configurations streamline changes deployment



Reduce staff workload by automating tasks
Switch staff workload from repetitive tasks to high-value tasks

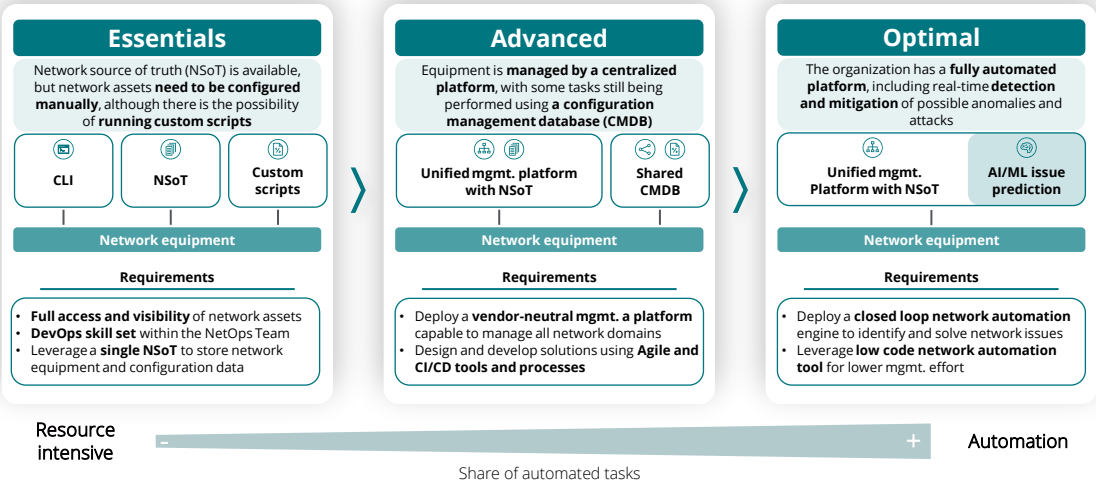
How can organizations benefit from automation?

The adoption of network automation solutions helps organizations to cope with the current and future enterprise network requirements. By increasing the automation level of enterprise networks, businesses can tackle their existing performance and operational limitations from legacy network management processes.



When to adopt network automation?

A smooth transition to a fully automated network can be achieved by following an incremental approach with three automation scenarios, starting with a scenario with a high share of manual tasks, to a fully automated scenario.



How can Deloitte help?

Who are we?

- Leading global provider of **business and technical advisory**
- Enterprise and Telecom expertise in **project management** and **business process transformation**
- gTEE - Global Telecom Engineering Excellence** engineers dedicated to **designing and implementing network automation solutions**
- Multidisciplinary teams** combining technical expertise with strategic **consulting skills**
- Independent and personalized advisory working in a close **agnostic cooperation** with major **vendors**

Contacts

 Filipe Leonardo Associate Partner Global Telecom Engineering Excellence (gTEE) fleonardo@deloitte.pt	 Miguel Fé Rodrigues Manager Global Telecom Engineering Excellence (gTEE) mfg.rodrigues@deloitte.pt	 Duarte Ramalho Manager Global Telecom Engineering Excellence (gTEE) duramalho@deloitte.pt	 Luís Abreu Partner Global Telecom Engineering Excellence (gTEE) labreu@deloitte.pt
--------------------------------------------------------------------------------------------------------------------------	------------------------------------------------------------------------------------------------------------------------	---------------------------------------------------------------------------------------------------------------	--------------------------------------------------------------------------------------------------------

Acknowledgements
Special thanks to whom contributed to this publication in terms of researching, providing expertise, and coordinating:

Maurício Pereira | José Sérgio Vilela | Sérgio Domingues | Miguel Carreiro

"Deloitte," "us," "we" and "our" refer to one or more of Deloitte Touche Tohmatsu Limited ("DTL"), its global network of member firms, and their related entities (collectively, the "Deloitte organization"). DTL (also referred to as "Deloitte Global") and each of its member firms and related entities are legally separate and independent entities, which cannot obligate or bind each other in respect of third parties. DTL and each DTL member firm and related entity is liable only for its own acts and omissions, and not those of each other. DTL does not provide services to clients. Please see www.deloitte.com/about to learn more.

Deloitte provides industry-leading audit and assurance, tax and legal, consulting, financial advisory, and risk advisory services to nearly 90% of the Fortune Global 500® and thousands of private companies. Our professionals deliver measurable and lasting results that help reinforce public trust in capital markets, enable clients to transform and thrive, and lead the way toward a stronger economy, a more equitable society and a sustainable world. Building on its 175-plus year history, Deloitte spans more than 150 countries and territories. Learn how Deloitte's 415,000 people worldwide make an impact that matters at www.deloitte.com.

This communication contains general information only, and none of Deloitte Touche Tohmatsu Limited ("DTL"), its global network of member firms or their related entities (collectively, the "Deloitte organization") is, by means of this communication, rendering professional advice or services. Before making any decision or taking any action that may affect your finances or your business, you should consult a qualified professional adviser. No representations, warranties or undertakings (express or implied) are given as to the accuracy or completeness of the information in this communication, and none of DTL, its member firms, related entities, employees or agents shall be liable or responsible for any loss or damage whatsoever arising directly or indirectly in connection with any person relying on this communication. DTL and each of its member firms, and their related entities, are legally separate and independent entities.