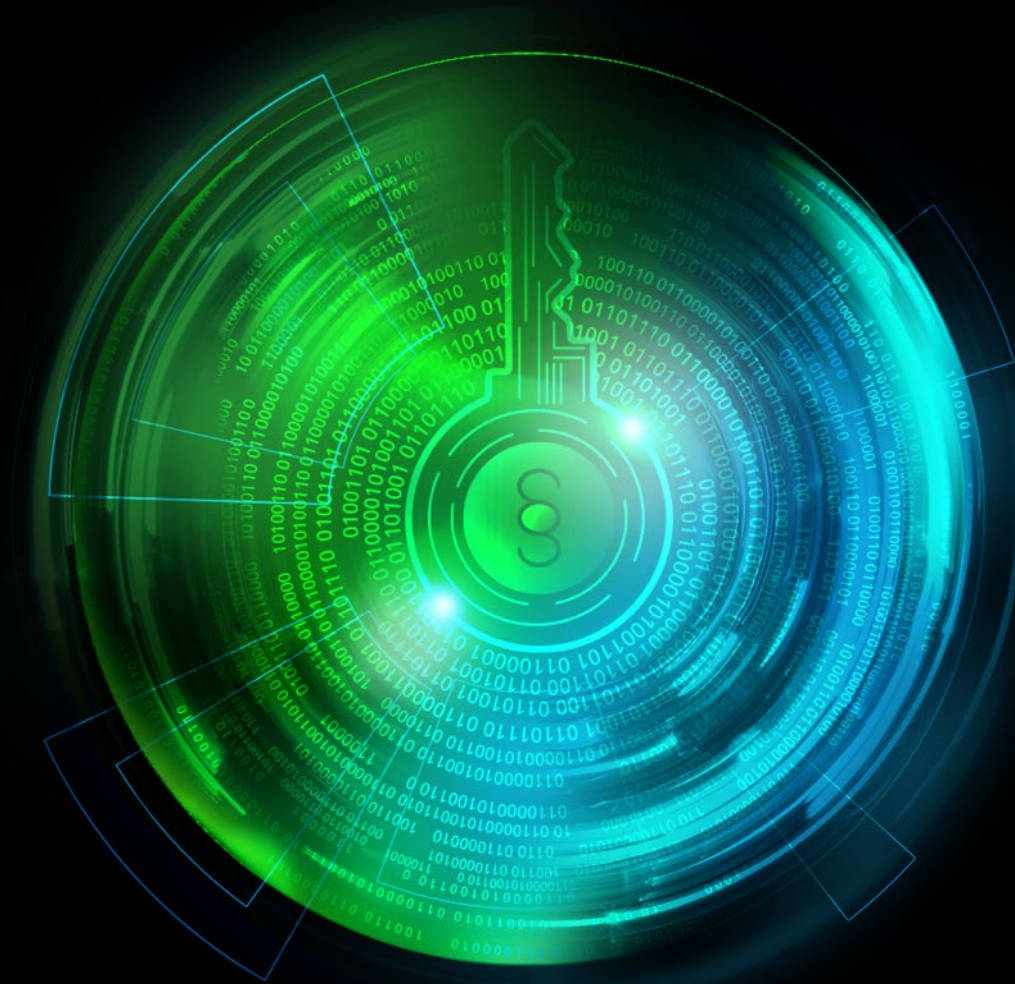


Deloitte.



DORA
Digital Operational
Resilience Act

Digital Operational Resilience Act (DORA)

A regulation that aims to unify and harmonise digital and cyber security expectations for the entire financial sector at European level.



ICT Risk Management

Establishes a framework for ICT risk management based on a set of key principles and requirements



Incident Reporting

Sets the rules for securing, managing and reporting of incidents to the supervisory authority



Digital Operational Resilience Testing

Introduces mandatory digital resilience testing of tools, systems and infrastructure, including penetration testing



Third-party ICT Risks

Includes the minimum contractual elements of outsourcing and vendor contracts

DORA regulation becomes **effective on 17th January 2025.**

Public Consultations over published RTS in 2023–2024



Increase cybersecurity maturity



Reduce risks in the financial sector



Strengthen the Digital Resilience



Ensure compliance with digital and operational resilience and avoid fines: Fines could be imposed up to 1% of an organisation's average daily worldwide turnover.

How can we help you comply with DORA?



Benchmark

- Checking the **readiness** and conducting a **high-level gap analysis**
- Providing benchmark based on **Deloitte and industry standards**

Level 1



GAP Analysis

- Detailed Gap Analysis performed by our **Maturity Assessment Tool**
- Detailed **description of the current status**

Level 2



Action Plan

- **Optimizing processes** to comply with regulation
- **Weak and strength points** for the improvement
- Defining of the **next steps**

Level 3



Implementation

- Advisory and help with the **implementation of all weaknesses** and identified gaps
- **Establishing robust** risk management processes to comply with the regulation

Level 4

CAP

DORA Maturity Assessment Tool



Year-on-year expectations comparison



Deep-dive Analysis of DORA domains



Identification of DORA maturity level



Domain subtypes and ICT risk framework interconnections



Evaluating group vs. subsidiary maturity levels



Setting short-term and annual goals



Quick wins for DORA compliance progress



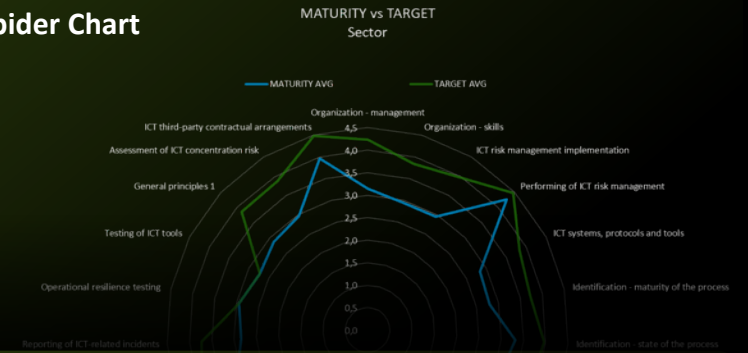
Industry and peer-group benchmarking



More is coming

Reporting features

Spider Chart



Heat Map



Domain Overview



Feel free to **contact us**

for more information for a non-obligatory consultation or to request more information:

Dejan Perić

Director

+381 (0)65 224 6870

deperic@deloittece.com



Borko Mijić

Manager

+381 (0)65 222 55 90

bmijic@deloittece.com



Aleksandar Mirković

Manager

+382 (0)69 376 627

almirkovic@deloittece.com



Deloitte website

- [DORA: EU Regulation on Digital Operational Resilience for Financial Institutions \(deloitte.com\)](https://www.deloitte.com)

Why Deloitte

- ✓ Experienced team of professionals and collaboration of:
 - IT Technology,
 - Risk Advisory,
 - Cyber,
 - and Legal experts across Deloitte DCE.
- ✓ Effective Project management
- ✓ Minimized impact on time and staff resources
- ✓ Quality Assurance
- ✓ Experience Across industries
- ✓ Up-to date Assessment Tool



Deloitte refers to one or more of Deloitte Touche Tohmatsu Limited (“DTTL”), its global network of member firms, and their related entities (collectively, the “Deloitte organization”). DTTL (also referred to as “Deloitte Global”) and each of its member firms and related entities are legally separate and independent entities, which cannot obligate or bind each other in respect of third parties. DTTL and each DTTL member firm and related entity is liable only for its own acts and omissions, and not those of each other. DTTL does not provide services to clients. Please see www2.deloitte.com/rs/en/about-us to learn more. Deloitte je vodeća globalna organizacija koja pruža usluge revizije i usluge uveravanja, poslovnog, finansijskog, poreskog i pravnog konsaltinga, i konsaltinga u upravljanju rizicima. Deloitte pruža podršku najvećim kompanijama na svetu (četiri od pet kompanija sa liste Fortune Global 500®) putem globalno povezane mreže društava članova u više od 150 zemalja sveta. Da biste saznali više o tome na koji način približno 312,000 Deloitte-ovih stručnjaka doprinosi, ne samo uspehu klijenata, već i celokupne zajednice, posetite www.deloitte.com.

Deloitte Central Europe is a regional organization of entities organized under the umbrella of Deloitte Central Europe Holdings Limited, the member firm in Central Europe of Deloitte Touche Tohmatsu Limited. Services are provided by the subsidiaries and affiliates of, and firms associated with Deloitte Central Europe Holdings Limited, which are separate and independent legal entities. The subsidiaries and affiliates of, and firms associated with Deloitte Central Europe Holdings Limited are among the region’s leading professional services firms, providing services through nearly 9,000 people in 39 offices in 19 countries.

In the Republic of Serbia, the services are provided by Deloitte Advisory d.o.o. Beograd and Deloitte d.o.o. Beograd (jointly referred to as “Deloitte Serbia”) which are affiliates of Deloitte Central Europe Holdings Limited.

Deloitte Serbia is one of the leading professional services organizations in the country providing services in five professional areas - audit, consulting, financial advisory, risk management and tax services through over 250 national and specialized expatriate professionals.

This communication contains general information only, and none of Deloitte Touche Tohmatsu Limited („DTTL“), its global network of member firms, or their related entities (collectively, the “Deloitte Network organization”) is, by means of this communication, rendering professional advice or services. Before making any decision or taking any action that may affect your finances or your business, you should consult a qualified professional adviser.

No representations, warranties or undertakings (express or implied) are given as to the accuracy or completeness of the information in this communication, and none of DTTL, its member firms, related entities, employees or agents shall be liable or responsible for any loss or damage whatsoever arising directly or indirectly in connection with any person relying on this communication. DTTL and each of its member firms, and their related entities, are legally separate and independent entities.

© 2023. Za informacije, kontaktirajte Deloitte Srbija.

© 2023. Za informacije, kontaktirajte Deloitte Central Europe.