



## Deloitte service offering on pharmaceuticals labelling



### Our services and experience

We help pharmaceutical companies to implement track-and-trace (T&T) solutions. We can consult those who are implementing T&T independently but require support with some complicated matters, or provide full-scope support with T&T implementation.

| Service area                                      | What we do   |
|---|--|
| <b>Business processes</b>                         | <ul style="list-style-type: none"><li>Analyse the existing business processes and re-engineer them to accommodate the flow of labelled goods and identify the best options for labelling</li><li>Develop a T&amp;T implementation roadmap and target business processes</li></ul>  |
| <b>Technology support (software and hardware)</b> | <ul style="list-style-type: none"><li>Analyse the as-is IT systems and develop a to-be IT architecture</li><li>Develop the functional and technical requirements for T&amp;T solutions</li><li>Analyse the existing production lines and installed equipment and develop requirements for purchasing new equipment</li><li>Support implementation of electronic document flow (EDF) to exchange legally binding electronic documents</li></ul> |
| <b>Overall project support</b>                    | <ul style="list-style-type: none"><li>Implement and test T&amp;T solutions</li><li>Advise on regulatory controversies</li><li>Act as the Project Management Office (PMO)</li></ul>   |
| <b>Industry-specific support</b>                  | <ul style="list-style-type: none"><li>Monitor legislation updates</li><li>Conduct workshops/trainings for personnel on the system of monitoring of pharmaceuticals movement (MDLP)</li><li>Revise internal policies/procedures and contracts with service providers from the T&amp;T and EDF perspectives, based on our industrial knowledge</li></ul>   |



### Our strengths

- All-in-one service package:** from development of business processes to IT implementation
- Team with a wide skill set:** professionals with experience in mandatory labelling, IT, legal, tax, and customs
- Strong industrial focus:** all team members have a deep understanding of T&T and the pharma industry
- Community:** Deloitte is an official provider of the Center of development of perspective technologies (CRPT) and member of various working groups; we have good relations with key T&T vendors
- Experience:** Deloitte serves most major pharmaceutical companies in Russia; we have implemented several large-scale T&T projects for pharma majors



### Contacts

**Alexandra Kalinina**

Head of Track&amp;Trace Group

[akalinina@deloitte.ru](mailto:akalinina@deloitte.ru)

Phone: +7 (495) 787 06 00 ext. 1880

**Anna Klimova**

Business processes and EDF solutions

[aklimova@deloitte.ru](mailto:aklimova@deloitte.ru)

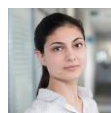
Phone: +7 (495) 787 06 00 ext. 5286

**Pavel July**

Head of Track&amp;Trace Technology Integration

[pjuly@deloitte.ru](mailto:pjuly@deloitte.ru)

Phone: +7 (495) 787 06 00 ext. 1946

**Anna Alieva (Petrik)**

Customs solutions/Pharma Track&amp;Trace expert

[aalieva@deloitte.ru](mailto:aalieva@deloitte.ru)

Phone: +7 (495) 787 06 00 ext. 8036

Deloitte refers to one or more of Deloitte Touche Tohmatsu Limited ("DTTL"), its global network of member firms, and their related entities. DTTL (also referred to as "Deloitte Global") and each of its member firms are legally separate and independent entities. DTTL does not provide services to clients. Please see [www.deloitte.com/about](http://www.deloitte.com/about) to learn more.

© 2020 Deloitte Consulting LLC. All rights reserved.