

**Deloitte.**

## Construction X

New technology for implementing  
construction projects

Russia, Moscow, 18 February 2015



**“All the great things are simple.”**

Sergey Brin

Co-founder, Google

# Deloitte

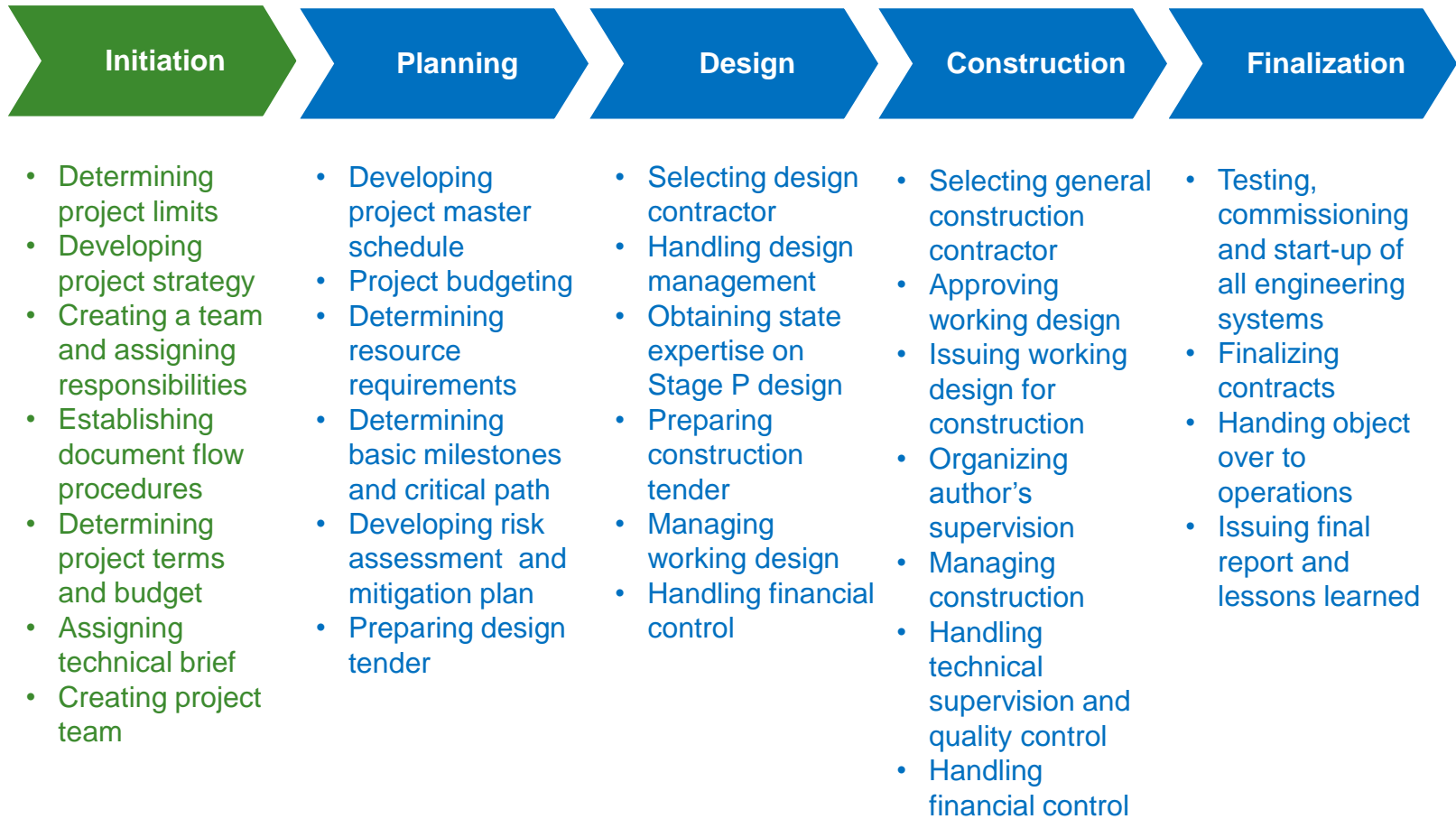
## Construction X

**Deloitte construction X** – is a completely new and simple technology for implementing construction projects of any complexity. This technology is based on three main elementary principles:

- **How** Feasibility study of the overall project with properly prepared design documentation, including the required procedures and standards for the work.
- **What** Ensure the uninterrupted supply of the required materials and equipment taking into account the logistics and time parameters for production of finished products.
- **Who** Resource planning based on required financial indicators for completing construction on schedule with positive indicators.

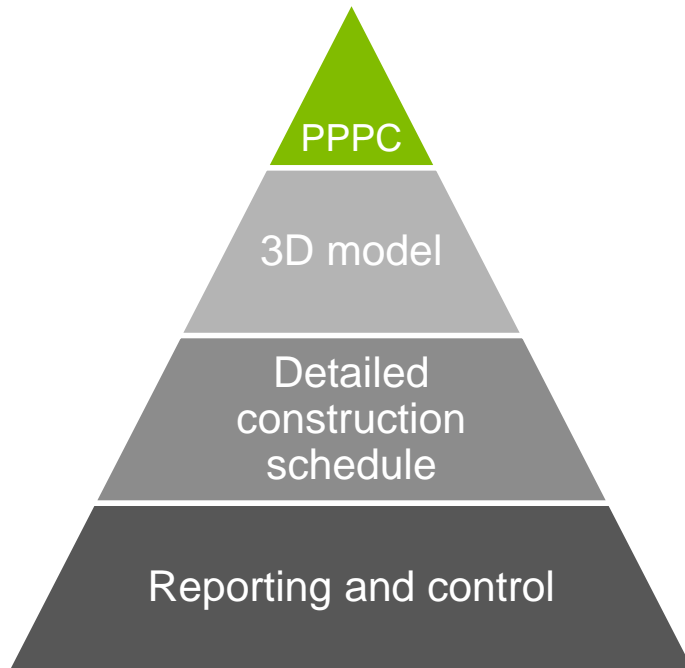


## Construction X – Approach to the project



# Main principles

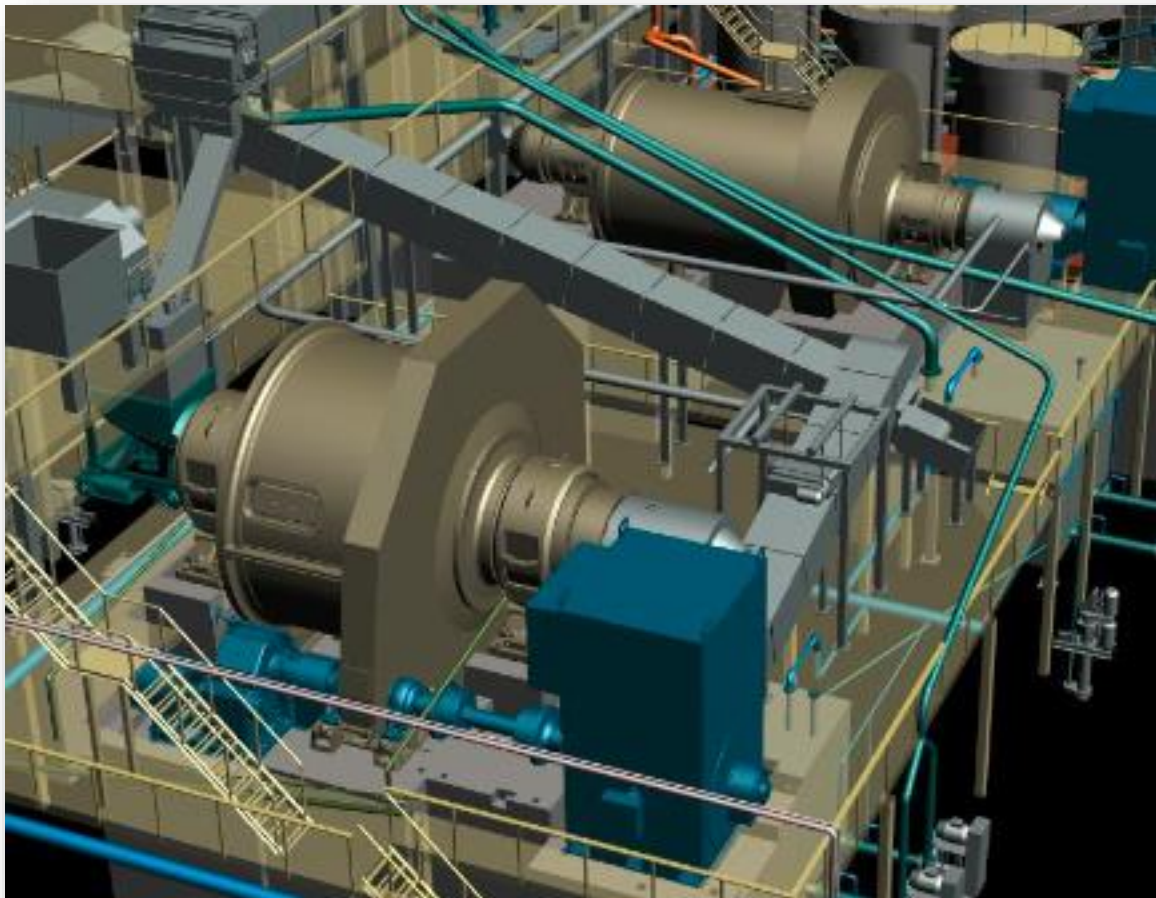
## Deloitte Construction X





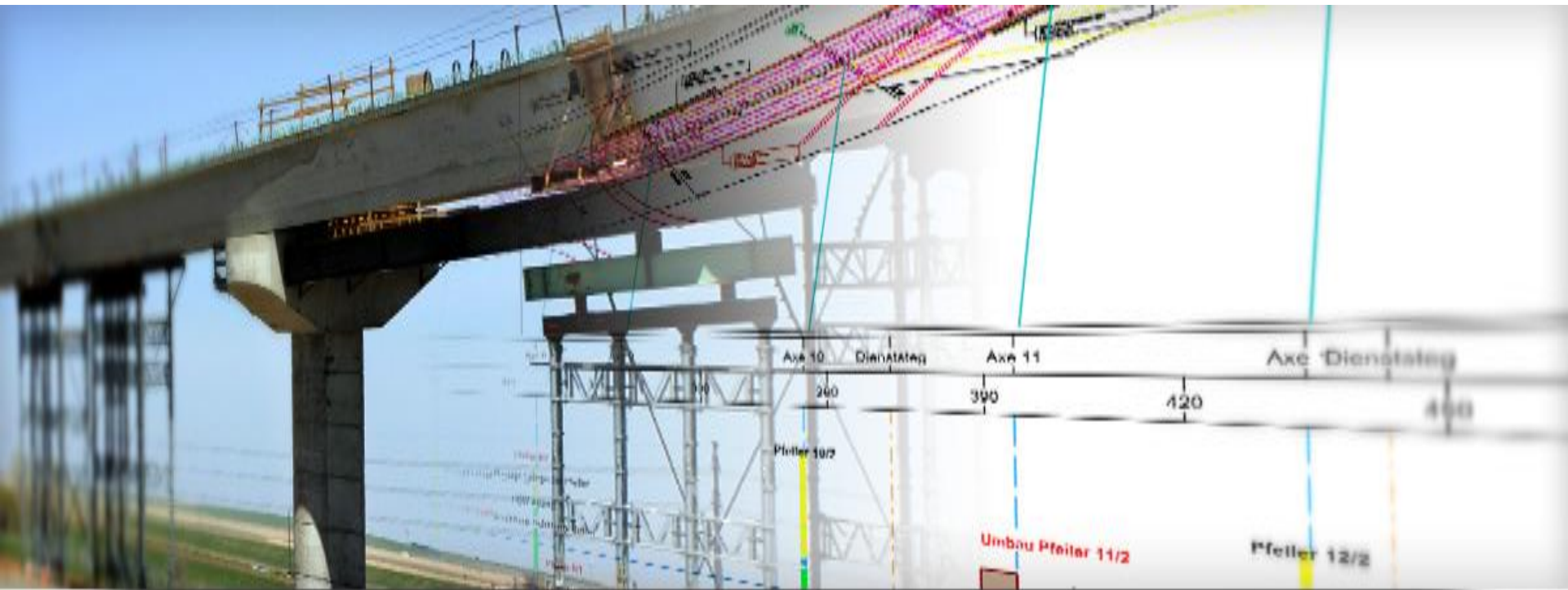
# Technology №2

**3D model** – Ensures as-built documentation complies with working documents



# Technology №3

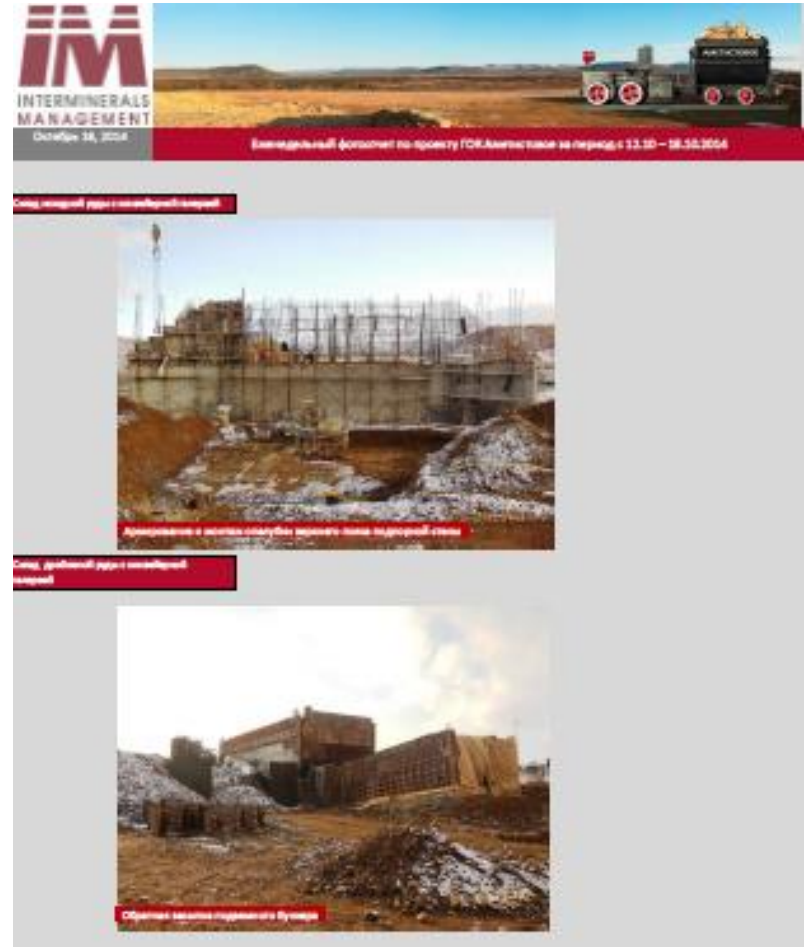
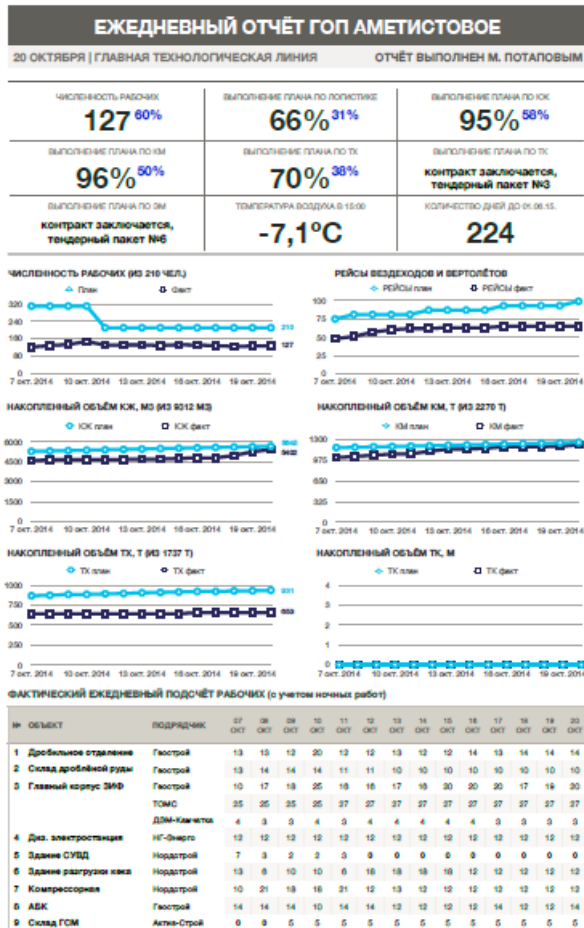
**Detailed master schedule** – The main sequence of works based on resource planning and construction rates of implementation





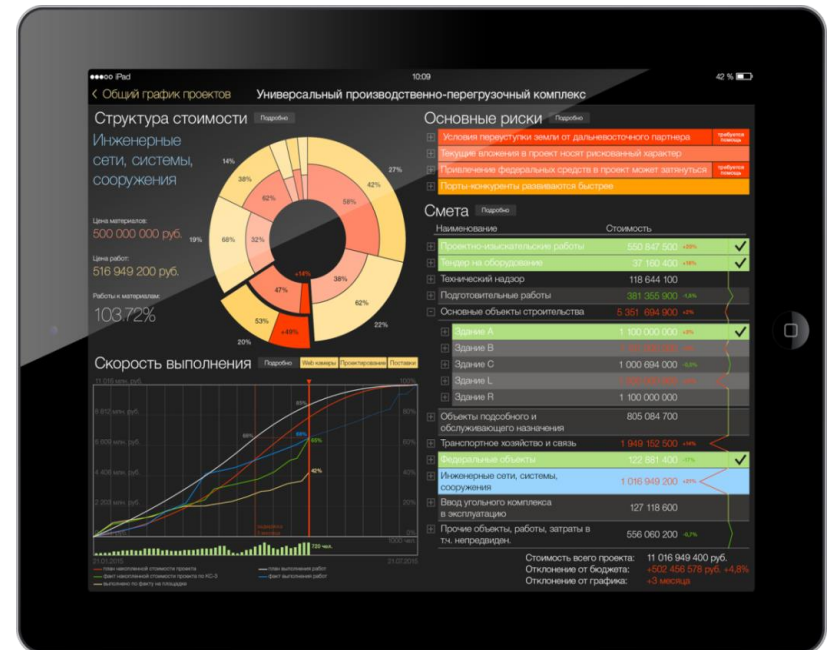
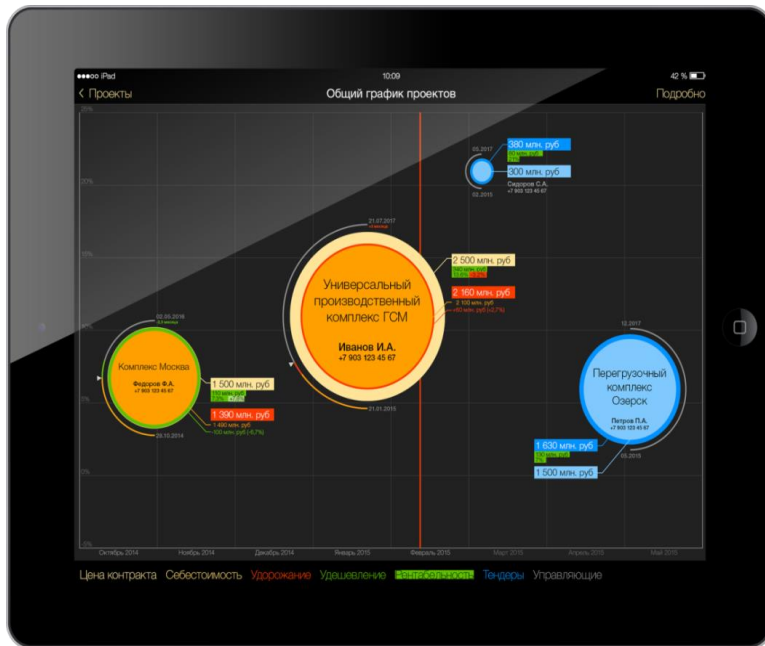
# Technology №4

## Reporting daily/weekly/monthly



# Potential for development

## Situational awareness interfaces



**Deloitte.**

Thank You  
for your time

Russia, Moscow, 18 February 2015





Deloitte refers to one or more of Deloitte Touche Tohmatsu Limited, a UK private company limited by guarantee (“DTTL”), its network of member firms, and their related entities. DTTL and each of its member firms are legally separate and independent entities. DTTL (also referred to as “Deloitte Global”) does not provide services to clients. Please see [www.deloitte.com/about](http://www.deloitte.com/about) for a more detailed description of DTTL and its member firms. Please see [www.deloitte.com/ru/about](http://www.deloitte.com/ru/about) for a detailed description of the legal structure of Deloitte CIS

Deloitte provides audit, tax, consulting, and financial advisory services to public and private clients spanning multiple industries. With a globally connected network of member firms in more than 150 countries and territories, Deloitte brings world-class capabilities and high-quality service to clients, delivering the insights they need to address their most complex business challenges. Deloitte’s more than 200,000 professionals are committed to becoming the standard of excellence.

This communication contains general information only, and none of Deloitte Touche Tohmatsu Limited, its member firms, or their related entities (collectively, the “Deloitte Network”) is, by means of this communication, rendering professional advice or services. No entity in the Deloitte network shall be responsible for any loss whatsoever sustained by any person who relies on this communication.

© 2014 ZAO Deloitte & Touche CIS. All rights reserved.