

## Rosprirodnadzor to carry out large-scale inspections

Federal Law [No. 458-FZ](#) of 29 December 2014, which introduced amendments to Federal Law [No. 89-FZ](#) "On Industrial and Consumer Waste" (the "Law"), expanded the responsibilities of manufacturers and importers of products and packaging.

According to the new provisions, producers and importers are now obliged to file three different types of reports and pay environmental duty, unless they have arranged for recycling of their product and/or packaging waste.

### **The 2016 reporting deadlines are:**

1 April 2017 (Declaration of the volume of products and packaging released in the reporting period; Report on compliance with recycling targets);

15 April 2017 (Environmental duty assessment form)

The deadline for payment of the environmental duty for 2016 was 15 April 2017.

---

## Inspections

Rosprirodnadzor is currently planning large-scale inspections to check the manufacturers' and importers' compliance with their extended responsibilities with a focus on:

- Failure to submit the required reports
- Inaccurate reports/reports in the wrong format
- Material differences between the information in reports and existing product and packaging company's data
- The companies that arranged for (partial) recycling of product and packaging waste

With all the legal uncertainties and absence of out-of-court appealing procedures, the companies might have to defend their positions in court.

---

## Liability for noncompliance

The foregoing breaches may be treated as a failure to comply with the environmental and public health requirements in the process of handling production and consumer waste, which, pursuant to Article 8.2 of the Russian Administrative Offences Code, entails:

- A penalty of RUB 10,000 to RUB 30,000 for company officials
- A penalty of RUB 100,000 to RUB 250,000 or a suspension of operations for up to 90 days

---

## Necessary steps

As little time is left before the possible inspections, we recommend that the companies perform the following preparatory activities:

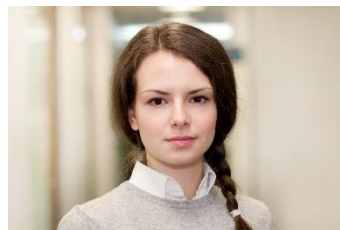
1. Analyse their compliance with the expanded responsibility requirements and file the mandatory reporting forms to Rosprirodnadzor
2. Review the submitted reports for compliance with the legal requirements and consistency with the company's data
3. Prepare the rationale behind the calculation of the environmental duty and the methods used to assess one's extended responsibility obligations and prepare reports

We hope you will find this information timely and useful. Should you have any questions, please refer to your regular Deloitte contacts or to Deloitte Waste Management team.



**Tatiana Kofanova**  
Director

 [Send e-mail](#)



**Julia Peregudova**  
Senior Consultant

 [Send e-mail](#)



[deloitte.ru](http://deloitte.ru)

Deloitte refers to one or more of Deloitte Touche Tohmatsu Limited, a UK private company limited by guarantee ("DTTL"), its network of member firms, and their related entities. DTTL and each of its member firms are legally separate and independent entities. DTTL (also referred to as "Deloitte Global") does not provide services to clients. Please see [www.deloitte.com/about](http://www.deloitte.com/about) for a more detailed description of DTTL and its member firms.

Deloitte provides audit, consulting, financial advisory, risk management, tax and related services to public and private clients spanning multiple industries. Deloitte serves four out of five Fortune Global 500® companies through a globally connected network of member firms in more than 150 countries bringing world-class capabilities, insights, and high-quality service to address clients' most complex business challenges. To learn more about how Deloitte's approximately 244,000 professionals make an impact that matters, please connect with us on [Facebook](#), [LinkedIn](#), or [Twitter](#).

This communication contains general information only, and none of Deloitte Touche Tohmatsu Limited, its member firms, or their related entities (collectively, the "Deloitte Network") is, by means of this communication, rendering professional advice or services. Before making any decision or taking any action that may affect your finances or your business, you should consult a qualified professional adviser. No entity in the Deloitte Network shall be responsible for any loss whatsoever sustained by any person who relies on this communication.

5 Lesnaya Street  
Moscow, 125047, Russia

© 2017 Deloitte Consulting LLC. All rights reserved.

To no longer receive emails about this topic please send a return email to the sender with the word "Unsubscribe" in the subject line.