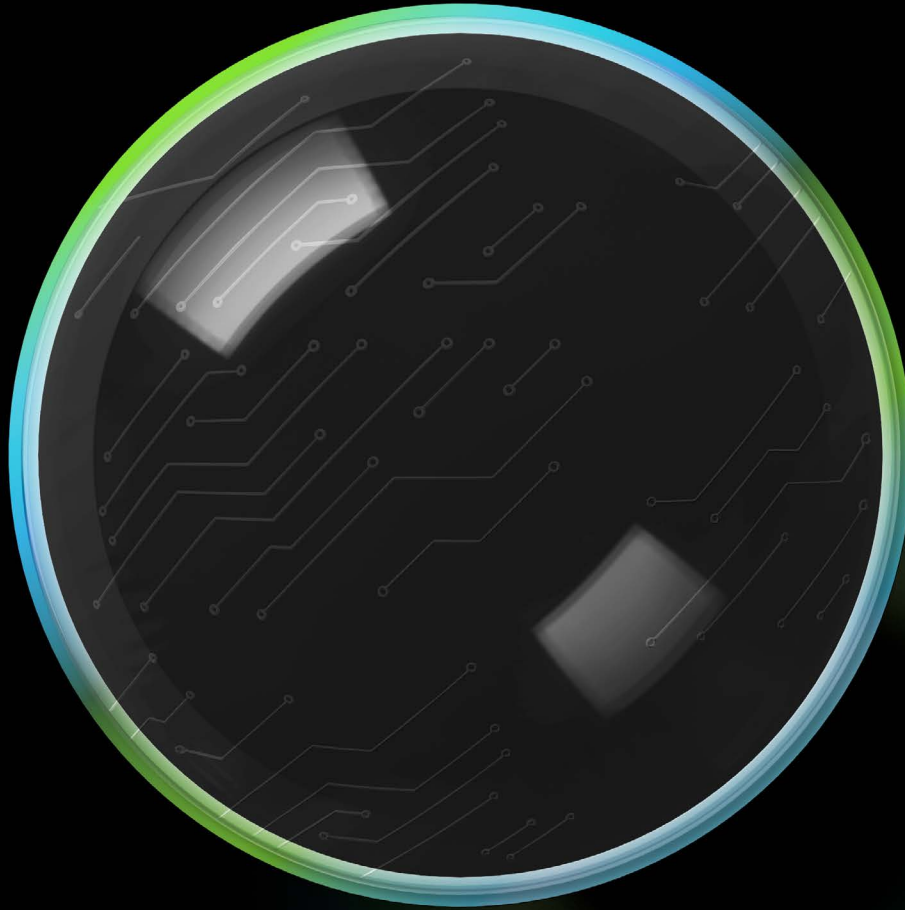


Deloitte.



2023 Transparency Report
Deloitte AB

29 September 2023



Contents

Deloitte AB leadership message	02
Deloitte Sweden: legal structure, ownership and governance – leadership in action	03
Deloitte network	04
Deloitte Audit & Assurance: Our commitment to serving the public interest	06
External and internal audit quality monitoring	19
Independence, ethics, and additional disclosures	21
Appendix A EU EEA audit firms	25
Appendix B Financial information	27
Appendix C Public interest entities	29

Deloitte AB leadership message

This report sets out the practices and processes that are currently employed by Deloitte AB, in accordance with the requirements of the European Union's Regulation 537/2014 on specific requirements regarding statutory audit of public interest entities. It relates to the fiscal year 1 June 2022 to 31 May 2023.



Didrik Roos

Conclusion on the effectiveness of the system of quality management

Deloitte Sweden is responsible for designing, implementing, and operating a system of quality management (SQM) for audits or reviews of financial statements, or other assurance or related services engagements performed by the firm, that provides the firm with reasonable assurance that the objectives of the SQM are being achieved.

Deloitte Sweden concluded that the SQM provides the firm with reasonable assurance that objectives of the SQM are being achieved as of end of May 2023.

Reasonable assurance is obtained when the system of quality management reduces to an acceptably low level the risk that the objectives of the SQM are not achieved. Reasonable assurance is not an absolute level of assurance, because there are inherent limitations of a system of quality management.

Approved by the Board on September 29, 2023

Didrik Roos*
Chief Executive Officer
Deloitte AB

* Didrik Roos was registered as the Chief Executive Officer for Deloitte AB as of June 19, 2023.

Deloitte Sweden: legal structure, ownership and governance – leadership in action

Deloitte AB ("Deloitte Sweden") is the company providing services to clients. Deloitte Sweden operates as a limited liability company, established under Swedish law, with registered office at 113 79 Stockholm and registration number 556271-5309. Deloitte Sweden is a registered audit firm.

Deloitte Sweden is a wholly owned subsidiary of Deloitte Sweden AB. Deloitte Sweden AB is a limited liability company registered under number 559113-5560. Deloitte Sweden AB is owned by 101 auditors and specialists at Deloitte Sweden together with Deloitte NSE LLP and Deloitte NSE No2 Company Limited by Guarantee. The auditors and specialists own their shares directly or indirectly through Swedish limited liability companies. Deloitte NSE No2 Company Limited by Guarantee has voting control in Deloitte Sweden AB.

Deloitte Sweden is the parent company of its wholly owned subsidiary Deloitte & Touche Sverige AB.

The partner meeting of Deloitte Sweden AB and Deloitte Sweden is according to agreement the supreme governing body whereas the shareholders' meeting is the supreme governing body according to the Swedish Companies Act.

Partner meetings are held annually and whenever necessary. In addition, there are four partner information meetings scheduled annually with comprehensive information to partners on the activities and substantive issues.

The Board of Directors and the Chief Executive Officer for Deloitte Sweden are elected for a period of three years.

The Board of Directors work to ensure that all embracing principles are fulfilled and handles for a limited liability company customary governance issues. The Board of Directors shall hold five meetings per year and whenever necessary. The Board of Directors are also members of Partnership Council overseeing and handling partner matters.

The Board of Directors (which also constitutes the Partnership Council) consisted as of May 31, 2023 of the following members:

Deloitte Sweden – Board of Directors

Christina Bergman, Partner

Anna Sabelström Holmberg, Partner

Therese Kjellberg, Partner

Anders Rinzén, Partner

Hans Warén, Partner and Chairman

The Executive Group provides operational leadership and has authority and accountability for strategy execution and management of Deloitte Sweden's operations. The Executive Group shall hold eight meetings per year and whenever necessary. The Executive Group consisted as of May 31, 2023 of the following executives:

Deloitte Sweden – Executive Group

Chief Executive Officer, Jan Berntsson

Chief Operating Officer, Morten Nielsen

Head of Audit & Assurance, Kent Åkerlund

Head of Tax & Legal, Frida Haglund

Head of Consulting, Erik Olin

Head of Risk Advisory, Michael Bernhardt

Head of Financial Advisory, Andreas Marcetic

Head of Clients and Industries, Marika Fond

Risk and Reputation Leader, Jonas Ståhlberg

Human Resources and Talent Partner, Anna Pontén

Kent Åkerlund, Audit & Assurance Business Leader, is appointed by the Chief Executive Officer of Deloitte Sweden. Kent Åkerlund and the Audit & Assurance leadership develop and implement the strategy for the Audit & Assurance practice, including related policies and procedures. In all of their activities, Deloitte Sweden Audit & Assurance leaders are responsible for the overarching objective of audit quality, including compliance with applicable professional standards and regulatory requirements. Deloitte Sweden's strategy is developed in alignment with the overall strategic direction established for the Deloitte network.

Deloitte Sweden Audit & Assurance leaders participate in Deloitte network groups that set and monitor quality standards, and from which a number of audit quality initiatives emanate.

Deloitte network

Deloitte Sweden: Affiliate of Deloitte NSE

Deloitte Sweden is a Swedish affiliate of Deloitte NSE LLP, a member firm of the Deloitte network. The governance arrangements are set out below.

Deloitte NSE is the second largest member firm in the Deloitte network.

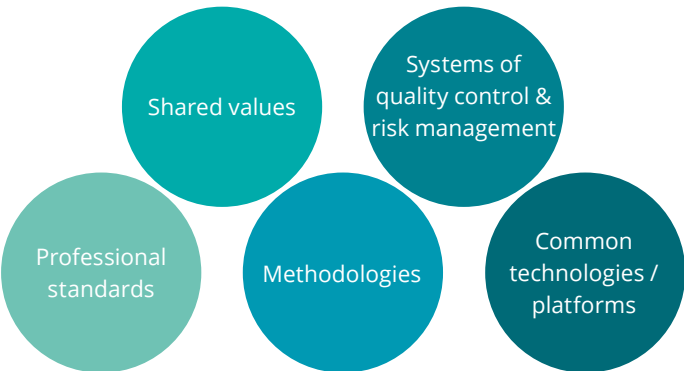
Deloitte Sweden operates as a part of the Nordic Geography of Deloitte NSE.

Deloitte NSE brings together over 75,000 professionals who collaborate to provide audit and assurance, tax and legal, consulting, financial advisory, and risk advisory services.

Network description

The Deloitte network

The Deloitte network (also known as the Deloitte organization) is a globally connected network of member firms and their respective related entities operating in more than 150 countries and territories across the world. These separate and independent member firms operate under a common brand.



Deloitte Touche Tohmatsu Limited (DTTL or DTTL Global)

Deloitte Touche Tohmatsu Limited is a UK private company limited by guarantee incorporated in England and Wales. DTTL serves a coordinating role for its member firms and their related entities by requiring adherence to policies and protocols with the objective of promoting a consistently high level of quality, professional conduct and service across the Deloitte network. DTTL does not provide professional services to clients, or direct, manage, control or own any interest in any member firm or any member firm's related entities.

“Deloitte” is the brand under which approximately 457,000 dedicated professionals in independent firms throughout the world collaborate to provide audit and assurance, tax and legal, consulting, financial advisory, and risk advisory services. These firms are members of DTTL. DTTL, these member firms and each of their respective related entities form the “Deloitte organization”. Each DTTL member firm and/or its related entities provide services in particular geographic areas and are subject to the laws and professional regulations of the particular country or countries in which they operate. Each DTTL member firm is structured in accordance with national laws, regulations, customary practice, and other factors, and may secure the provision of professional services in its respective territories through related entities. Not every DTTL member firm or its related entities provides all services, and certain services may not be available to attest clients under the rules and regulations of public accounting. DTTL, and each DTTL member firm and each of its related entities, are legally separate and independent entities, which cannot obligate or bind each other in respect of third parties. DTTL and each DTTL member firm, and their respective related entities, are liable only for their own acts and omissions, and not those of each other. The Deloitte organization is a global network of independent firms and not a partnership or a single firm. DTTL does not provide services to clients.

Our purpose and commitment: instilling trust and confidence

At Deloitte Sweden, our purpose is to make an impact that goes beyond the expected. For Audit & Assurance, this means a constantly evolving audit and assurance process, leveraging leading-edge technology, applying a diversity of skillsets, knowledge, and experience to deliver high quality services. We take great pride in instilling confidence and trust in the capital markets and are committed to relentlessly raising the standards of quality and always acting with integrity, independence and transparency. We are continuously building our capabilities to support the delivery of high quality audits and other assurance engagements and making leading contributions to shaping the future of the audit profession.

Deloitte Audit & Assurance: Our commitment to serving the public interest

A focus on audit quality

Deloitte's commitment to audit quality permeates everything we do. The independent audit is a central element of the corporate reporting ecosystem, in place to enhance the confidence and trust of investors and other stakeholders, as well as to promote the effective functioning of the capital markets. Deloitte is keenly aware of our obligation to deliver audit services that meet the challenges and complexities of the current environment, while complying with professional and regulatory standards. For the corporate reporting ecosystem to function as intended, it is vital that the auditor's role be executed effectively.

Deloitte is committed to doing more than simply meeting regulatory requirements and conforming to expectations. Deloitte is going beyond the expected to set the standard of excellence for the profession. In keeping with that objective, our commitment to audit quality is unequivocal.

Deloitte Global leadership

The Deloitte Global Audit & Assurance Executive, which includes the Audit & Assurance Business Leaders from the member firms is led by Jean-Marc Mickeler, the Deloitte Global Audit & Assurance Business Leader, whose responsibilities include defining and driving the Deloitte Global Audit & Assurance strategy, with a particular focus on:

- Driving key audit and assurance initiatives across the Deloitte network to accomplish quality outcomes.
- Leading transformational initiatives to innovate the way our audit and assurance engagements are executed to meet the evolving needs of our stakeholders.

Entities Deloitte audits

As part of Deloitte's Audit & Assurance's commitment to supporting the capital markets, we are focused on auditing entities where it serves the public interest and where we have the capabilities to perform a quality audit with objectivity and in compliance with applicable professional standards and laws and regulations, including those relating to ethics and independence.

Deloitte Sweden has detailed policies and procedures in place for the acceptance of prospective clients, the continuance of existing engagements and the assessment of engagement risk. These policies and procedures are designed with the objective that Deloitte Sweden will only accept or continue with engagements where it:

- Is able to perform the engagement and has the capabilities, including time and resources, to do so.

- Can comply with all relevant professional standards and laws and regulations, including those relating to ethics and independence and conflicts of interest assessments and considerations.
- Considers the client's management team to act with integrity and in alignment with our shared values.

The company we keep is an important aspect of our Audit & Assurance strategy and global shared values that guide our behavior to lead the way, serve with integrity, take care of each other, foster inclusion and collaborate for measurable impact. The question we ask ourselves is: what type of entities do we, as a global network, want to be associated with? In order to answer this question, an audit and assurance risk appetite statement has been developed to serve as the foundation for the company we want to keep. The risk appetite statement can be used as a tool to promote robust discussion of risk, and as a basis upon which acceptance and continuance decisions can be debated and challenged effectively and credibly. The statement, as shown below sets the tone for the risk culture and aims to drive global consistency in the engagement acceptance and continuance decision making process:

"Deloitte's Audit & Assurance (A&A) portfolio risk appetite underpins our purpose led agenda and reinforces our Principles of Business Conduct, which articulate the standards to which we hold ourselves, wherever in the world we live and work, in order to build and maintain a sustainable business for current and future generations.

Consistent with our commitment to purpose and to act in the public interest, we recognize that taking on a degree of risk is a natural consequence of doing business. In order to deliver high quality audit and assurance services, we proactively identify and manage risk through our quality control processes, policies and procedures to make informed decisions aligned to our strategy and values.

We aspire to have a portfolio of clients that aligns with our shared values, respects our professionals, recognizes emerging issues and societal responsibilities, and is committed to providing transparency to stakeholders in the financial reporting ecosystem. We endeavor to have a portfolio that does not include clients that lack integrity, engage in illegal activities, disregard the authenticity of financial accounting and reporting, or are unwilling to establish and maintain sufficient internal controls and related processes."

Audit & Assurance – the future, today

At Deloitte, meeting expectations is where our Audit & Assurance services begin.

Our people’s commitment to integrity, to serve the public interest, and to deliver high quality assurance over the areas that matter most to our stakeholders is at the core of everything we do.

We are leaders in quality and will continually deliver on this commitment by focusing on excellence across people, process, and technology. Each of these core components helps us to deliver our vision for a better future, creating an impact that not only meets expectations but goes beyond them.

What does this look like? A constantly evolving audit and assurance practice, leveraging bright minds, effective processes, and world-class technologies from across our global organization while drawing on our years of experience. We deliver high quality services in an efficient and effective way that upholds integrity, builds confidence, and drives value by focusing on what really matters.

Audit & Assurance transformation is an important shift across the network in the way Deloitte practitioners work and includes:



Delivering audit excellence through process, people, and technology transformation¹

With The Deloitte Way, Deloitte is bringing standardization, consistency, and efficiency to drive quality into the core of how our audits are executed: with automation that improves routine tasks and analytics that support audit execution—yielding a deeper and more insightful view into the available data. As a result, we are improving the quality of the audits we deliver while also creating a richer talent experience for our people and clients, providing a streamlined, digital audit experience, that provides greater transparency and insights.

Innovation and technology enablement are an expectation in today’s fast-changing business environment, and this expectation holds true for the audit profession as well. Today’s complex business environment requires that the audit be dynamic, multidimensional, and insightful. There is a demand for real-time, relevant information, and we need to evolve our audits as the entities we audit innovate their businesses and processes. Leveraging evolving technology and data, a Deloitte audit delivers deeper insights to create more consistent and transparent audit and assurance for our stakeholders. Deloitte brings bright minds, effective processes, and world-class technologies from across the global organization to deliver an impact beyond expectations.

Deloitte Sweden auditors are enhancing the way they work by making more use of data-driven analytics, as well as cognitive and cloud-based technologies. This is due, in part, to the increased automation and effectiveness these provide, but also the need for Deloitte Sweden to stay abreast of technological advances used by the entities that we audit.

Deloitte is committed to the continued investment in emerging technologies and diversity of thought that enables the delivery of enhanced quality, insights, and value to our clients and the markets. Deloitte’s global audit platforms, Deloitte Omnia and Deloitte Levvia, demonstrate our commitment to delivering digital, high-quality audits of all sizes and levels of complexity. Deloitte Omnia is our cloud-based, end-to-end audit delivery platform for larger and complex audits, while Deloitte Levvia delivers a streamlined, right-sized digital audit experience for low risk and less complex entities. Development, enhancement, and deployment of both platforms will continue over the next few years. Deloitte is also developing and implementing innovative global data and analytics solutions, and our integrated suite of enabling innovation technologies which are all connected in the cloud.

Auditing in disruptive times

In the wake of tremendous global disruption marked by public health, political, and social uncertainties over the past few years, the profession, along with all corporate reporting ecosystem stakeholders, has been affected. Deloitte’s response to the uncertainties and disruptions has included efforts to continue advancing the profession, while prioritizing the wellbeing of its people.

¹ For more information about Deloitte audit innovation, please refer to [Global Impact Report](#).

Particularly in the current environment, a sharpened awareness regarding the heightened risk of fraud, the presence of emerging or evolving risk factors, and the need for effective internal control environments remains critical. Although the existing accounting frameworks have provisions for uncertainties, financial statement users and regulators should continue to expect a higher degree of market and economic volatility in the near term.

Deloitte has consistently welcomed public statements and guidance issued by regulators that recognize uncertainties and emphasize the importance of high-quality, forward-looking corporate disclosures. Greater transparency benefits the public, just as raising awareness about these issues, especially when all corporate reporting ecosystem stakeholders participate. More clarity about the unique and complementary responsibilities of management, audit committees, entities, auditors, regulators, and other stakeholders enables the investing public to hold accountable these parties in a way that effectively serves the public interest.

The value of high-quality audit and assurance services is not diminished in the midst of global unrest. Rather, investors and other stakeholders continue to call for professional services based on independence and objectivity-based principles and practices to engender trust and inspire confidence in the capital markets—and Deloitte is committed to leading the way.

Deloitte Swedish's commitment to serving the public interest—especially as it relates to behaving according to the highest standards of ethics, integrity, independence, and transparency is steadfast. Deloitte is keenly aware of the gravity of responsibility that comes with meeting professional obligations and discharging its role as auditors within the corporate reporting ecosystem globally. The following principles remain at the forefront and are continuously reinforced with Audit & Assurance practitioners:

- Exercise professional skepticism and due professional care
- Critically evaluate the quality of audit evidence obtained and determine whether it is sufficient and appropriate to address relevant risks
- Make well-reasoned professional judgments supported by clear documentation
- Foster a culture of excellence and consultation
- Demonstrate commitment to integrity and ethical behavior, including compliance with regulatory and professional obligations
- Stay connected and support one another

Multidisciplinary model (MDM)

Deloitte's robust multidisciplinary business model comprises audit and assurance, tax, consulting, and risk and financial advisory practices and is an important contributor to the organization's ability to deliver high-quality audit and assurance services. Specifically, the scope of corporate reporting has begun to expand and it is expected to transform drastically in the near future; Financial statements and corporate disclosures will continue to become more complex due to ESG considerations and other matters (cyber, AI, data privacy, etc.). In addition, as big data and other digital advances become routine, the demand for data analysts and IT specialists will grow accordingly.

The MDM remains foundational to Deloitte's cross-disciplinary services globally. Deloitte prides itself on having a deep bench of independent specialists who can be deployed around the world on engagements to provide subject matter expertise and new, insightful perspectives. Deloitte believes that the current MDM helps the organization deliver high-quality audits and assurance engagements in the public interest and reinforces the resilience of the audit and assurance practice. The strengths of the MDM include:

- The possibility to develop industry or thematic insights (e.g., climate, governance, corporate strategy, etc.) through multiple lenses, which enhances auditors' understanding of business risks relevant to conducting audits.

- The MDM enables access to functional specialists and industry experts who are independent, and who provide audit support helping to deliver high-quality audits. This will become more important as we move towards broader corporate reporting.
- The breadth of the MDM is attractive to candidates who may not want to limit their career options to providing audit and assurance services only.
- The scale of the MDM brings greater resilience to each Deloitte business line, including audit and assurance, allowing continued investment in technology, methodology, and process to support delivery of high-quality services.

Deloitte leadership recognizes that each Deloitte business line is important and critical to the organization's ability to deliver on its public interest responsibilities. Management's attention and investment allocation are not limited to the business lines with the highest growth rates.

Deloitte acknowledges the possibility and perception of conflicts of interest, and therefore has robust conflicts and independence policies and systems to help ensure that Deloitte's strategy is executed in alignment with regulatory and professional requirements. In some areas, Deloitte policies are more stringent than professional standards, laws, or regulations.

Environmental, social, and governance (ESG) reporting

The foundations of business are changing rapidly—long-term resiliency and the ability to create enduring value is directly linked to alignment with the values and expectations of society. Market participants and other stakeholders are calling for greater insight into how organizations are building, protecting, and enhancing enterprise value over time, and are specifically demanding enhanced transparency around climate-related and broader ESG impacts and the dependencies of an entity's business model and strategy.

Specifically, Deloitte recognizes that climate change poses a risk to financial stability and impacts businesses in many sectors with increased disclosure and reporting expectations from various stakeholders.

Deloitte is taking strategic actions to educate our people on climate change and the potential impact on audited entities to support the execution of high-quality audits, thereby giving appropriate consideration to climate-related risks and opportunities. This includes the deployment of materials such as a climate learning curriculum, as well as a framework and related guidance to consider climate-related matters as part of the audit.

Broader corporate reporting

Traditional financial reporting is beginning to evolve into broader corporate reporting. To support this evolution, there are standard setting and rulemaking efforts regarding sustainability by the International Sustainability Standards Board (ISSB) and others around the world.

These standards emphasize the need for better connectivity between financial and non-financial reporting and will help users of corporate disclosures better understand and compare information about entities. Further, these standards will enable greater transparency, consistency, and comparability globally, as well as shift the requirements for climate-related reporting from being voluntary to mandatory.

To be effective, the standards need to be adopted globally in a consistent manner to deliver corporate reporting which is comparable, based on the global baseline, and supplemented by local considerations where warranted. These standards will also need to be brought into regulation around the world, together with associated enforcement, monitoring, governance and controls, assurance, and training. The developments in standard-setting and rulemaking are intended not only to create transparency and consistency in global baseline reporting, but also to make clear that information in financial reporting and information contained in sustainability reporting together are essential inputs to inform a stakeholder's view of an entity's value.

Therefore, there is a growing demand for companies to integrate climate-related and other ESG considerations into internal control policies and procedures, enhancing the maturity of systems, processes, and governance over climate-related and other ESG information. As a result, those charged with governance (e.g., audit committees, boards) are increasingly incorporating ESG considerations in their oversight responsibilities of an organization's management, its reporting, and their data-collection processes and controls.

Deloitte understands that given the increased risks associated with climate change, it is important for climate-related factors to be properly incorporated into corporate reporting. Today some stakeholder's expectations may not be met by financial statements prepared in accordance with current accounting frameworks. As corporate reporting continues to evolve and stakeholders accommodate and adapt to market shifts and public sentiment, it is important to allow for appropriate due process in order to develop robust standards applied consistently across the globe and to drive reporting that is responsive to the growing asks of investors and other stakeholders.

Deloitte remains committed to engaging in meaningful and transparent conversations with investors, standard-setters, regulators, and other relevant stakeholders. We also look forward to supporting reduced standard and regulatory fragmentation and to greater market confidence as consistency in standards is realized globally.

Assurance

With the increased focus and scrutiny of ESG reporting also comes the increased need for confidence over the quality of disclosures and increasing calls for assurance requirements. Individual jurisdictions, such as the European Union and the United States, are moving to introduce or strengthen regulation around sustainability reporting. Assurance requirements are increasingly becoming mandatory.

Providing assurance on ESG information should be expected to follow a professional framework including competence, independence, a system of quality management, and be subject to oversight and inspection as well as professional liability mechanisms to ensure that credible assurance is delivered to the market.

Below are specific actions that Deloitte is undertaking to support execution of high-quality assurance that appropriately address ESG voluntary reporting and regulatory requirements:

- Engaging in shaping the capital market infrastructure for sustainability reporting tied to enterprise value through collaboration on climate and ESG standard setting reporting, and assurance initiatives, such as the IFRS Foundation, the International Auditing and Assurance Standards Board, and the International Ethics Standards Board for Accountants.

- Actively participating in various global platforms such as the World Economic Forum and the 2022 UN Framework Convention on Climate Change (COP27).
- Deployment of enhanced guidance to deliver limited and reasonable ESG assurance through Deloitte's global sustainability assurance methodology. Building capacity through global and localized learning focused on ESG.
- Developing technology-enabled tools, including a tool to evaluate a company's sustainability disclosures against common ESG standards.

Deloitte supports the continued collaboration of all participants in the corporate reporting ecosystem, working together to develop and implement common standards upon which to measure, disclose, and ultimately assure ESG information.

Deloitte's commitment

Further, to help the world achieve the goals of the Paris Agreement, Deloitte has launched [WorldClimate](#), a strategy to drive responsible climate choices within the Deloitte network and beyond.



Shaping the future of the audit profession

The provision of relevant and reliable financial and, increasingly, non-financial information is critical to both the capital markets and broader society. Policy makers, regulators, investors, company directors, audit committees, and auditors all have an important role so that users of corporate information have a clear and robust picture of uncertainties and risks in a company's business model to help support their informed decision making.

Uncertainty and complexity are set to remain a central theme over the coming years, driven by heightened global challenges and the rapid advancement of technology.

Deloitte is committed to establishing a meaningful vision for the future of the profession which addresses the shifting needs of society.

We are continually innovating to address the challenges of efficiency and effectiveness through technology, data, and ways of working. In parallel, the role of audit and assurance in the corporate reporting ecosystem, its responsibility to act in the public interest, and its evolving contribution to societal value remains at the forefront of our work in this area. Through proactive engagement with a range of stakeholders, we seek to understand today's rapidly developing issues faced by society (e.g., ESG, cyber, AI, data privacy, etc.) and the role that audit and assurance can play in responding and driving change for the better.

We strive to engage with these parties, both formally and informally, to share, offer, and debate ideas that foster our collective ambition to ensure the ongoing and growing relevance of audit and assurance to the capital markets.

Professional development and performance management

Deloitte's culture of excellence and the design of learning programs place people at the forefront. Deloitte practitioners are technically proficient with high levels of ethics, integrity, professional skepticism, and objectivity, applying their judgment and experience with passion and commitment. We are continuously enhancing our skillsets, knowledge, and experience to go beyond the expected and deliver meaningful impact.

Deloitte is committed to delivering an unrivalled talent experience, developing practitioners, and furthering their careers by creating a life-long learning environment—advancing audit education, skillsets, and flexible career options that appeal to auditors of today and tomorrow.

Deloitte practitioners bring diverse backgrounds, knowledge, and skills that enhance capabilities as an organization in delivering the highest quality audits. We support and empower our people to achieve their full potential by valuing and demonstrating diversity, equity, inclusion, and wellbeing. In addition, operational discipline, effective management of the business, and our singular approach to doing audits known as The Deloitte Way provide global consistency to our audits.

Deloitte recognizes and rewards its Audit & Assurance practitioners and professionals and makes meaningful investments in their futures.



Learning and development initiatives

Deloitte's transformed approach to audit delivery is changing the audit experience for practitioners. Audit teams are empowered by advanced tools and technologies and more extensive use of data and analytics within a guided workflow to execute the end-to-end audit. For Deloitte practitioners, this means focusing on how the engagement is planned, executed, and managed consistently across the globe using our innovative techniques and capabilities. It also offers opportunities to enhance their technical and professional skillsets and competencies. For example, the following skills remain as important as ever—enhanced data analytics, project management, critical thinking, communication, professional judgment, and the application of accounting and auditing principles to work more effectively and deliver high-quality engagements. As capabilities and skillsets are enhanced, we build greater confidence and become ever-better evaluators of risk.

Deloitte has made substantial investments in talent and learning strategies and transformed the technical audit curriculum to build the refreshed skillsets and proficiency required by level:

- At the core, Deloitte has a single, global mandatory audit technical learning curriculum, tailored for learners by level, using a dynamic blend of live instructor-led, digital on-demand courses, and on-the-job activities.
- All client service practitioners are required to follow the firm's learning requirements for their roles and complete sufficient continuing professional education (CPE) each year and over a cyclical three-year period to ensure both compliance with regulatory standards and Deloitte internal policies. This is achieved through structured, formal learning programs, such as internal or external courses, seminars, or e-learning covering all areas of the competency model (e.g., shared competencies, function-specific technical competencies, and competencies in areas of specialization).
- All client service practitioners have clearly defined role expectations and global Talent Standards which outline the capabilities that are required of practitioners at each level.

Deloitte has also established specific learning opportunities for specialists working on audit engagements to support their knowledge and understanding of the audit process. In addition, our assurance learning offering is being expanded to respond to emerging business needs.

The objective of the Deloitte Sweden professional development program is to help partners and practitioners maintain and enhance their professional competence and ensure consistency of audit execution. To supplement on-the-job development, Deloitte Sweden provides formal continuing professional development programs in relevant subject areas consistent with the Deloitte Global Audit & Assurance Curriculum.

Deloitte University

Deloitte actively cultivates the collective knowledge and skills of Deloitte people globally through continued investment in Deloitte Universities (DU). These are state-of-the-art learning and development centers focused on Deloitte culture and founded in the principles of connectedness and leadership in a highly inclusive learning environment. Last year, in-person programming returned to Deloitte Universities, providing opportunities for our people to reconnect with each other after several years of remote learning.

Deloitte. University

Audit & Assurance Leadership appointments

Critical Audit & Assurance leadership roles are clearly defined. A role profile and key performance indicator framework provide a basis for consistent leadership appointments and evaluations across the Deloitte Audit & Assurance network and align member firm and Deloitte Global Audit & Assurance strategic objectives. Deloitte has introduced globally consistent standards for member firm Audit & Assurance leaders, including Audit & Assurance Business Leaders, Audit & Assurance Quality Leaders, and Audit & Assurance Risk Leaders through clearly defined roles, responsibilities, and expected success outcomes. These inform objective setting and evaluation processes and reinforce Deloitte's culture of quality and excellence. Robust monitoring of succession planning helps ensure Deloitte is developing and appointing the appropriate individuals with the capabilities to achieve these consistent standards.

Remuneration

Execution of high-quality audits is expected from all practitioners and is embedded across the Deloitte network. Audit quality is recognized through reward and recognition programs and is built into performance standards at every level, against which practitioners' overall evaluations are measured.

In accordance with global policies, Deloitte Sweden's partners are evaluated on a yearly basis, and depending on the outcome of the evaluation, the remuneration of partners may increase or decrease. Partners are assessed annually on their performance in quality service, professional competency, risk management and protecting our brand, leading people, operational excellence, market leadership and growth. Instances of non-compliance with our policies and quality standards result in remedial actions, which may include compensation adjustment, additional training, additional supervision, or reassignment. A pattern of non-compliance or particularly serious non-compliance may result in actions that include termination from Deloitte. The Executive Group evaluates individual partners and proposes remuneration changes. The process is reviewed by the Partnership Council that formally approves the final remuneration to all partners.

Attraction and retention

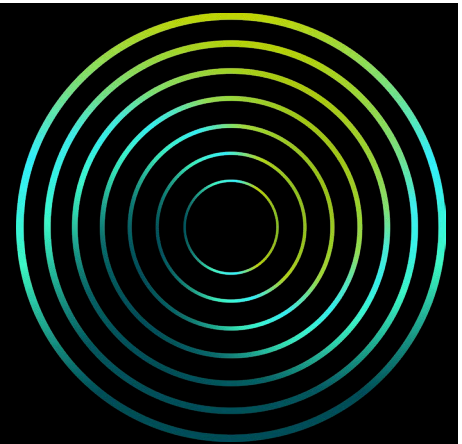
The current environment for talent is extremely competitive and attraction and retention of our people is a strategic priority for Deloitte. We acknowledge the challenges our people are facing and recognize our part to re-establish the connections that so many have missed during the COVID-19 pandemic. Deloitte is focused on transforming the Audit & Assurance talent experience, including reimagining the ways of working to improve retention and further advance the diversity, equity, and inclusion (DEI), and wellbeing of Deloitte people. We are looking at opportunities to collectively expand the talent experience. This focus on our people and retention of top talent enhances Deloitte's ability to deliver high-quality audits.

Deloitte continues to receive recognition and awards across the globe for its commitment to delivering an unrivalled talent experience for its people [Awards and recognition | Deloitte Global](#).

Social Impact

Making an *Impact* Every Day

We believe human connection can help create innovative solutions and lasting impact on pressing issues of our time. By harnessing the collective power of Deloitte's network of people, clients, nonprofits, and communities, we aim to achieve lasting social impact for the greater good.



Deloitte's priority focus on audit quality

Deloitte's commitment to audit quality is central to everything we do. We consistently deliver on this commitment by instilling a culture of quality and excellence across the network, establishing business and financial priorities, and developing effective processes, tools, and technologies applied in the execution of audits. Deloitte's brand is defined by the high-quality audits delivered and by the unwavering commitment to continuous improvement of our systems of quality management. Making sure audit quality keeps pace with emerging economic, business, and regulatory conditions, as well as technological advances, is critical to the continual enhancement of Deloitte's role in protecting the public interest and supporting the effective functioning of the corporate reporting ecosystem.



Leadership commitment and tone at the top

Deloitte's culture of quality and excellence begins with strong tone from the top, starting with senior leadership through to the leaders in all our offices and audit and assurance engagements. Deloitte's focus on audit quality is evident through the direct involvement of leaders in initiatives emphasizing that quality is the highest priority for audit and assurance practitioners at all levels and consistent messaging that reinforces the importance placed on executing high-quality audit and assurance engagements. Deloitte's relentless pursuit of quality defines not just what we do, but who we are.

System of quality management (SQM)

Deloitte believes an effective system of quality management is crucial for the consistent performance of high-quality audit engagements and we continue to make significant investments in our people, processes, and technologies that underlie Deloitte's quality management processes.

Regulators and standard setters in Sweden and globally are also focused on driving further improvements in firms' system of quality management. In December 2020, the IAASB released its new, revised suite of quality management standards, including International Standard on Quality Management 1 (ISQM 1). Systems of quality management in compliance with ISQM 1 were required to be designed and implemented by 15 December 2022.

ISQM 1 introduced a risk-based approach to the SQM that require firms to respond to quality objectives and risks to our ability to execute high-quality audits in the following areas:

- The firm's risk assessment process;
- Governance and leadership;
- Relevant ethical requirements;
- Acceptance and continuance of client relationships and specific engagements;
- Engagement performance;
- Resources;
- Information and communication; and
- The monitoring and remediation process.

The effective implementation of ISQM 1 has been and remains a key element of Deloitte's global audit quality strategy. Deloitte Sweden's ISQM 1 implementation activities were completed by 15 December 2022, building on the multi-year investments and commitment already delivered to go beyond the requirements of the existing professional standards.

As part of the implementation of ISQM 1, quality objectives, quality risks and responses were formalized and brought together in a globally consistent technology platform to facilitate the design and maintenance of the system, as well as the operation through tri-annual self-assessments by business process owners and reporting capabilities to support the required annual evaluation.

Deloitte Sweden continues to work with leaders across the firm, as well as the broader network, to further enhance our proactive approach to managing the quality of engagements performed—identifying and addressing risks to audit quality and driving continued advancements in quality management processes serves us well into the future as the environment within which we operate continues to evolve and become increasingly complex.

Consistent with Deloitte's culture of continuous improvement and innovation, Deloitte Sweden's ISQM 1 implementation efforts have provided us the opportunity to challenge ourselves—examining those areas where we can further enhance and transform our system of quality management. Audit quality is always front and center, and robust audit quality monitoring processes play an integral role in our ability to continually improve.

The first annual evaluation of the systems of quality management are required to be performed within one year following 15 December 2022. Deloitte Sweden performed its first evaluation of its SQM as of end of May 2023.

Conclusion on the effectiveness of the system of quality management

Deloitte Sweden is responsible for designing, implementing, and operating a system of quality management (SQM) for audits or reviews of financial statements, or other assurance or related services engagements performed by the firm, that provides the firm with reasonable assurance that the objectives of the SQM are being achieved. The objectives are:

- The firm and its personnel fulfill their responsibilities in accordance with professional standards and applicable legal and regulatory requirements, and conduct engagements in accordance with such standards and requirements; and
- Engagement reports issued by the firm or engagement partners are appropriate in the circumstances.
- Deloitte Sweden conducted its evaluation in accordance with the International Standard on Quality Management 1.

Deloitte Sweden concluded that the SQM provides the firm with reasonable assurance that objectives of the SQM are being achieved as of end of May 2023.

Reasonable assurance is obtained when the system of quality management reduces to an acceptably low level the risk that the objectives of the SQM are not achieved. Reasonable assurance is not an absolute level of assurance, because there are inherent limitations of a system of quality management.

Independence, objectivity, and professional skepticism

The execution of high-quality audits requires independence, objectivity, and professional skepticism. This means a continuous and tangible focus on Deloitte's critical role in serving the public interest, including creating a culture of quality where doing the right thing is of paramount importance. Deloitte consistently reinforces the important role of auditors as independent evaluators who must maintain a mindset of professional skepticism

throughout the conduct of our work. This approach to the audit is reflected in Deloitte policies, methods, procedures, and learning, and is reinforced through quality management and accountability measures.

Audit approach

Deloitte's approach to performing a high-quality audit involves the use of an audit methodology, common across the Deloitte network, supplemented by audit tools for use by our practitioners to plan, perform, supervise, review, document, conclude, and communicate the results of each audit. Deloitte's audit approach is underpinned by professional standards, as well as requirements of applicable laws and regulations.

Deloitte's audit methodology is risk-based, focusing on the financial statement account balances, disclosures, and underlying assertions that have a reasonable possibility of being materially misstated. Our audit methodology is also dynamic—it evolves continuously to keep pace with the changing demands of investors, companies, and other stakeholders. It recognizes that advances in the availability and management of large data sets and in statistical science are relevant to continuing to enhance the quality of Deloitte audits.

Resources to support Deloitte practitioners in the execution of high-quality audits

The resources applied by Deloitte practitioners in the performance of their audits include the proprietary tools, guidance, materials,

and practice aids used in conducting audits, which are available to all our practitioners in the Deloitte Global Technical Library, an extensive online library, and in our audit execution platforms (EMS, Deloitte Omnia, and Deloitte Levvia). Deloitte regularly issues accounting and auditing guidance to our practitioners and communicates developments that should be factored into audit risk assessments and responses in order to maintain and drive quality audit execution.

Consultation

Quality and risk management considerations are integral to Deloitte's audit business and to the performance of audit engagements. That is why Deloitte views consultation as an essential, collaborative process—one that involves robust challenge and helps determine the most appropriate answers to complex questions. Deloitte has identified circumstances where consultation outside of the engagement team is required in order to demonstrate an appropriate level of professional judgment and the exercise of professional skepticism. Deloitte consultation policies require that conclusions are documented, understood, and implemented. Foundational to the effectiveness of the consultation process is Deloitte's investment in consultation resources who have the appropriate skills and expertise. In addition to formal consultations, whenever engagement partners and teams need additional information or perspectives, they are encouraged to seek assistance from the Audit Quality department, or others in the organization with specialized knowledge.



External and internal audit quality monitoring

Audit Quality Monitoring & Measurement

A continued focus on audit quality is of paramount importance to the Deloitte brand. It is critical that a Deloitte audit is consistently executed and of high quality, wherever in the world it is performed.

The objective of monitoring and remediation processes are to provide relevant, reliable, and timely information about the design, implementation, and operation of the system of quality management to leadership in order to enable appropriate and timely actions to be taken to respond to identified deficiencies. This includes the identification of deficiencies and good practices in the system of quality management and the assessment of the effectiveness of remedial actions in driving improvements in audit quality.



System of quality management (SQM) monitoring

SQM monitoring is an integral part of Deloitte Sweden's monitoring activities and considers relevant requirements in ISQM 1, as well as evaluating the design, implementation and operating effectiveness of responses that address the quality risks that have been identified for the firm.

Audit Quality Indicators (AQIs) are used in conjunction with other metrics to further assist Deloitte Sweden in developing and monitoring audit quality action plans and reporting on the progress in its audit quality journey.



Monitoring of in-process engagements

Continuous audit quality monitoring by Deloitte Sweden involves the proactive identification of audit issues on in-process engagements in order to drive timely solutions and real time corrective actions. This is achieved through the following suite of activities:

- Deployment and monitoring of a series of core diagnostics, enabling engagement partners and teams, as well as Deloitte Sweden audit quality leader(s) to continuously monitor audit quality and take immediate action. A program of subject matter specific "health checks" to assist Deloitte Sweden audit quality leader(s) in assessing progress and identifying potential issues on in-process engagements.

- Inspections of in-process engagements which allows Deloitte Sweden to proactively identify and remediate any quality issues throughout the audit.
- Results of monitoring of in-process engagements are evaluated overall to determine whether additional communication and support is needed for audit engagement teams with respect to adherence to the audit methodology or updates thereto.



Inspections of completed engagements

Key components of inspections of completed engagements include:

- Risk-based engagement selection and consideration of all major industries served by Deloitte Sweden.
- Mandatory moderation panel to drive consistency in findings and engagement ratings.
- Network monitoring with external partners and deputies, independent of Deloitte Sweden, who drive global consistency by providing input and sharing best practices for monitoring programs.
- Identifying appropriate resources (from within Deloitte Sweden as well as from other Deloitte geographies) with the right experience and industry knowledge, including establishing central review teams.



External inspections

In addition to Deloitte Sweden's own monitoring of audit quality, we are subject to external monitoring by Revisorsinspektionen.

Internal monitoring	External monitoring
Date of inspection report: 2023-07-15, period covered: 2022-06-01 - 2023-05-31	Date of inspection report: 2022-03-31, period covered: 2021



Root cause analysis and remediation

Continuous improvement is essential to Deloitte's culture of quality and excellence. Understanding why engagement level findings and SQM deficiencies occur is critical to being able to design effective remedial actions. When engagement level findings or SQM deficiencies are identified, whether through internal or external monitoring activities, actions are taken to identify gaps and develop appropriate remediation activities. Remediation is imperative to drive continuous improvement in audit quality and avoid future similar findings. An audit quality plan is prepared by Deloitte Sweden and provides for effective implementation and monitoring of key audit quality priorities.

Independence, ethics, and additional disclosures

Deloitte Global Independence



Sets **independence policies and procedural expectations** based upon the Code of Ethics for Professional Accountants issued by the International Ethics Standards Board for Accountants and, where applicable, the independence standards of the US Securities and Exchange Commission and the Public Company Accounting Oversight Board.



Supports firms, as needed, with their annual SQC review and gives insights into global areas of focus. On a three-year cycle, Deloitte Global **Independence provides independence subject matter expertise that is leveraged during the firms' annual SQC review** as part of Audit Quality Monitoring & Measurement. In-depth follow-up reviews are conducted as needed.



Provides firms with **on-going independence expertise** through consultation—enabling continuous enhancements to global policies, procedural expectations, tools, and practice support activities.



Delivers **global systems** to provide its people with entity information to support compliance with personal and professional independence requirements, including financial interests, scope of service, and business relationship approvals.



Promotes **independence awareness** across the Deloitte network through active engagement with independence and business leadership groups, periodic communications and alerts, and development of guidance, learning and instructions.

Deloitte Sweden Independence

Deloitte Sweden has quality responses that address quality objectives and quality risks as they relate to the relevant ethical requirements for independence. These responses include policies and procedures that are based on expectations set out in Deloitte Global Independence policies, and which are supplemented, as appropriate, to reflect additional national or regional requirements that may be more restrictive than Deloitte Global policies. Deloitte Sweden leadership reinforces the importance of compliance with independence and related quality management standards, thereby setting the appropriate tone at the top and instilling its importance into the professional values and culture of Deloitte Sweden. Strategies and procedures to communicate the importance of independence to partners, other practitioners, and support staff have been adopted, emphasizing each individual's responsibility to understand and meet the independence requirements. The Director of Independence is responsible for overseeing independence matters within Deloitte Sweden, including the design, implementation, operation, monitoring, and maintenance of the system of quality management related to independence.

As part of the firm's system of quality management, Deloitte Sweden has:

- Implemented responses to address quality objectives and quality risks it has identified for its key independence areas;

- Performed appropriate monitoring activities over its key independence areas; and
- Has appropriate independence governance in place.

The firm's key independence areas include:

- Client, engagement, and business relationships, including use of the independence business process tools, the Deloitte Entity Search and Compliance (DESC) system, and the Service Request Monitoring (SRM) application
- Firm and personal financial relationships, including the use of the Global Independence Monitoring System (GIMS)
- Employment and other relationships
- Independence confirmations
- Independence consultations
- Independence-related policies, communications, and learning
- Breaches of independence requirements
- Disciplinary measures for failures to adhere to applicable independence requirements

Global Independence conducted a review of compliance with policies and procedures in the key independence areas during the year, and a report was issued on 2022-09-13.

**DESC**

Deloitte Entity Search and Compliance

Global, searchable database containing specific entity information relevant in determining personal and professional independence restrictions

**SRM**

Service Request Monitoring

Application integrated with DESC that provides a standard business process workflow for submitting and reviewing preapproval requests to provide services to clients and engaging in business relationships

**GIMS**

Global Independence Monitoring System

Application that contains financial relationship data with relevant independence compliance indicators

Long association requirements of audit partners and practitioners

Deloitte Sweden complies with the key audit partner rotation requirements of the code of the International Ethics Standards Board for Accountants (IESBA), Regulation (EU) 537/2014 of the European Parliament and of the Council of 16 April 2014, and generally accepted auditing standards in Sweden, as well as standards issued by the U.S. Securities and Exchange Commission (SEC), where required.

We employ processes to track key audit partner rotation that enable effective monitoring of compliance with requirements.

We have also implemented a process for gradual rotation mechanism and decisionmaking that involves consultation with, and approvals by, our Risk Management and Independence as needed.

Deloitte Sweden Ethics

All Deloitte people are expected to act with integrity in accordance with high ethical standards as described in the Deloitte [Global Principles of Business Conduct](#) ("Global Code"). The Global Code is embedded into the firm's Code of Conduct and defines the commitments that all Deloitte people make regarding ethical standards, as well as explaining each individual's responsibilities to their clients, colleagues, and society.

In addition to the Global Code, other foundational elements of Deloitte's ethics program include global policies, a program of training and communications, and established reporting channels supported by defined incident management protocols. For continuous improvement, regular program assessments and reviews are conducted, and feedback is collected from Deloitte people through an annual ethics survey.

Ethics at Deloitte Sweden is led by Ethics Officers, who are experienced leaders with direct access to the firm's CEO and governing body. Deloitte Global and firm ethics leaders work together to continually monitor risk and to reinforce compliance with the Global Code.

Deloitte Sweden maintains policies and procedures that build on the global policies and are designed to provide reasonable assurance that its people comply with relevant ethical requirements.

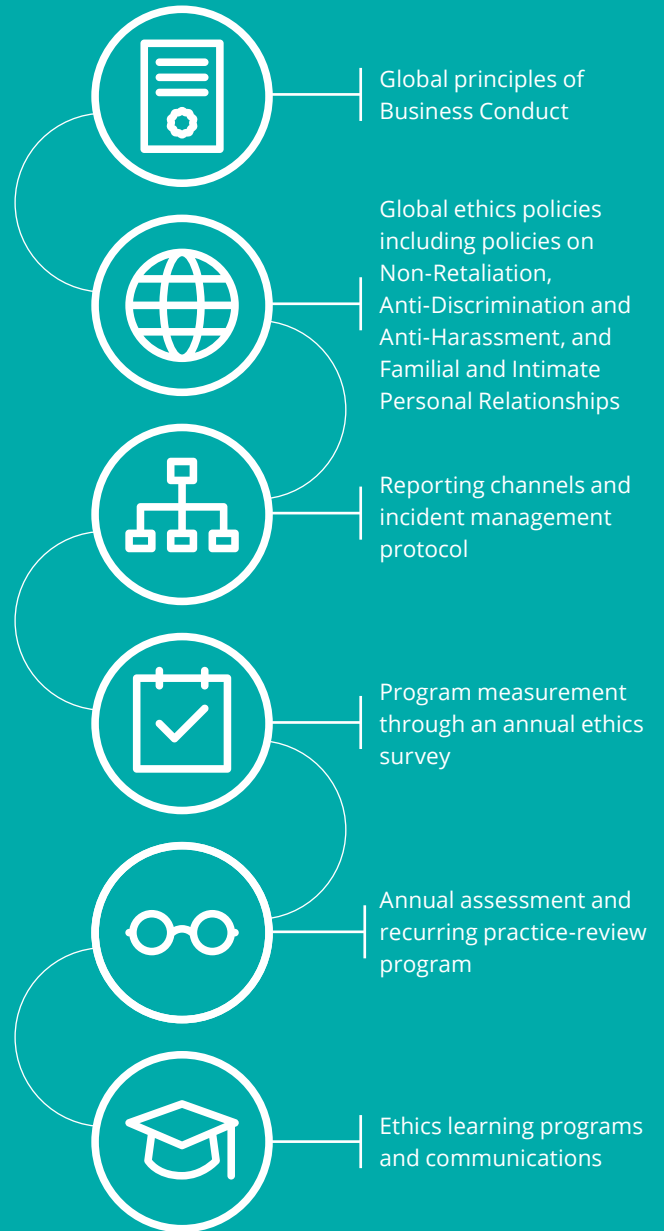
The ethical requirements for audit and related assurance services provided by Deloitte Sweden are in accordance with FAR's (the professional institute for the accountancy profession in Sweden) Ethics Standards. Deloitte Sweden also complies with Deloitte Global policies and procedures, which as well as FAR's Ethics Standards align with the requirements and guidance set out in the international Code of Ethics for Professional Accountants issued by the International Ethics Standards Board for Accountants, a standard-setting body of the International Federation of Accountants (IFAC). When FAR's national requirements are more restrictive than the Deloitte Global policies and procedures, Deloitte Sweden follows the applicable national requirements.

Deloitte Sweden reinforces its commitment to ethics and integrity through communication tools, learning programs, compliance processes, and measurement systems for all people. Learning includes targeted content for onboarding, manager promotion, independent contractors, and refresher programs every two years. Recent global training topics have included a focus on the importance of owning up to one's mistakes, and demonstrating respect, integrity and professionalism on social media, and courses have included a confirmation that professionals are aware that answers should not be shared with others and doing so would constitute a violation of the Global Code. In addition, Deloitte Sweden conducts ethics reviews for senior leaders and requires all partners, other practitioners, and support staff to confirm annually that they have read and comprehended the firm's Code of Conduct and understand that it is their responsibility to comply with it.

Deloitte Global Ethics

Deloitte is committed to conducting business with honesty, distinctive quality, and high standards of professional behavior.

Deloitte's Global Principles of Business Conduct ("Global Code") outlines Deloitte's ethical commitments as a network and expectations for Deloitte's approximately 457,000 people, giving a strong, principled foundation. The foundations of the network's ethics program is comprised of the following elements:



Appendices

Appendix A | EU EEA audit firms

Disclosure in accordance with Article 13.2 (b)(ii)-(iv) of the EU Audit Regulation ¹

EU/EEA Member State (Article 13.2 (b)(iii) EU Audit Regulation: the countries in which each audit firm that is a member of the network is qualified as a statutory auditor or has its registered office, central administration, or principal place of business)

Name of audit firms carrying out statutory audits in each member state (Article 13.2 (b)(ii) EU Audit Regulation: the name of each audit firm that is a member of the network)

EU/EEA member state ²	Name of audit firms carrying out statutory audits in each member state ³
Austria	Deloitte Audit Wirtschaftsprüfungs GmbH
	Deloitte Niederösterreich Wirtschaftsprüfungs GmbH
	Deloitte Oberösterreich Wirtschaftsprüfungs GmbH
	Deloitte Salzburg Wirtschaftsprüfungs GmbH
	Deloitte Tirol Wirtschaftsprüfungs GmbH
	Deloitte Wirtschaftsprüfung Styria GmbH
Belgium	Deloitte Bedrijfsrevisoren/Réviseurs d'Entreprises BV/SRL
Bulgaria	Deloitte Audit OOD
Croatia	Deloitte d.o.o. za usluge revizije
Cyprus	Deloitte Limited
Czech Republic	Deloitte Audit s.r.o.
	Deloitte Assurance s.r.o.
Denmark	Deloitte Statsautoriseret Revisionspartnerselskab
Estonia	AS Deloitte Audit Eesti
Finland	Deloitte Oy
France	Deloitte & Associés
	Deloitte Marque & Gendrot
	Deloitte Audit Holding
	BEAS
	Cisane
	Constantin Associés
	DB Consultant
	ECA Audit
	Opus 3.14 Audit et Conseil
	Pierre-Henri Scacchi et Associés
Revi Conseil	

¹ EU Regulation 537/2014 on specific requirements regarding statutory audit of public-interest entities

² EU transparency reporting requirement: the countries in which each audit firm that is a member of the network is qualified as a statutory auditor or has its registered office, central administration, or principal place of business.

³ EU transparency reporting requirement: the name of each audit firm that is a member of the network.

EU/EEA member state ²	Name of audit firms carrying out statutory audits in each member state ³
Germany	Deloitte GmbH Wirtschaftsprüfungsgesellschaft
	Deutsche Baurevision GmbH Wirtschaftsprüfungsgesellschaft
	SüdTreu Süddeutsche Treuhand GmbH Wirtschaftsprüfungsgesellschaft
Greece	Deloitte Certified Public Accountants S.A.
Hungary	Deloitte Könyvvizsgáló és Tanácsadó Kft.
Iceland	Deloitte ehf.
Ireland	Deloitte Ireland LLP
Italy	Deloitte & Touche S.p.A.
Latvia	Deloitte Audits Latvia SIA
Liechtenstein	Deloitte (Liechtenstein) AG
Lithuania	Deloitte Lietuva UAB
Luxembourg	Deloitte Audit
Malta	Deloitte Audit Limited
Netherlands	Deloitte Accountants B.V.
Norway	Deloitte AS
Poland	Deloitte Audyt spółka z ograniczoną odpowiedzialnością spółka komandytowa
	Deloitte Audyt spółka z ograniczoną odpowiedzialnością
	Deloitte Assurance spółka z ograniczoną odpowiedzialnością
Portugal	Deloitte & Associados, SROC S.A.
Romania	Deloitte Audit SRL
Slovakia	Deloitte Audit s.r.o.
Slovenia	Deloitte Revizija d.o.o.
Spain	Deloitte, S.L.
Sweden	Deloitte AB

Disclosure in accordance with Article 13.2 (b)(iv) of the EU Audit Regulation ⁴

The total turnover achieved by the audit firms that are members of the network, resulting from the statutory audit of annual and consolidated financial statements: €2.3 billion ⁵

⁴ EU transparency reporting requirement: the total turnover achieved by the audit firms that are members of the network, resulting from the statutory audit of annual and consolidated financial statements.

⁵ Amount represents an estimate determined based upon best efforts to collect this data. Certain Deloitte audit firms registered to perform statutory audits in respective member states provide statutory audit services as well as other audit, assurance, and non-audit services. While Deloitte endeavored to collect specific statutory audit turnover for each EU/EEA Deloitte audit firm, in certain cases turnover from other services has been included. The turnover amounts included herein are as of 31 May 2023, except for a limited number of instances where a Deloitte audit firm has different financial year-end or has not finalized its reporting for such period. In these cases, turnover amounts are for the relevant financial year or preceding financial year. Where currency other than the Euro is used in the member state, the amount in Euros was translated using an average exchange rate in effect for the period 1 June 2022 to 31 May 2023.

Appendix B | Financial information

Disclosure in accordance with Article 13.2 (k) (i)-(iv) of the EU Audit Regulation

Net revenue break-down as per EU auditing rules, Financial Year 2022/2023.

Turnover	SEK (millions)
Statutory audit (PIEs or PIE subsidiaries)	612
Statutory audit (non-PIEs or non-PIE subsidiaries)	518
Non-audit services (audited PIEs or PIE subsidiaries)	60
Non-audit services (audited non-PIEs or non-PIE subsidiaries)	102
Non-audit services (other entities)	2,613
Total revenue for FY22/23	3,904



Appendix C | Public interest entities

Disclosure in accordance with Article 13.2 (f) of the EU Audit Regulation

Public Interest Entities Audited for Statutory Purposes by Deloitte AB in the Financial Year 2022/2023:

Public interest entities that have issued transferable securities on a regulated market		
AB Sveriges Säkerställda Obligationer (publ)	Fasadgruppen Group AB	Profoto Holding AB
AB Volvo	I.A.R. Systems Group AB	RaySearch Laboratories AB (publ)
Addtech AB	If Skadeförsäkring Holding AB	Saniona AB
Aktiebolaget Industrivärden	Infant Bacterial Therapeutics AB (publ)	Sinch AB (publ)
Aktiebolaget SKF	Intrum AB	Sivers Semiconductors AB
Arla Plast AB	Investor AB	SkiStar AB
Atrium Ljungberg AB	Kährs BondCo AB	Stockholm Exergi Holding AB (publ)
Axfood AB	Lammhults Design Group AB	Strömma turism & sjöfart AB
Bactiguard AB	Legres AB (publ)	Svedbergs i Dalstorp AB
Beijer Ref AB (publ)	Lindab International AB	Svensk fastighetsfinansiering AB
Bergman & Beving Aktiebolag	Loomis AB	Svensk Hypotekspension Fond 4 AB
Bergs Timber AB	Maha Energy AB	Swedish Match AB
Bico Group AB	Media and Games Invest AB	Synsam AB (publ)
BioGaia AB	Midsona AB	Tele2 AB
Boliden AB	Midway Holding AB	Telefonaktiebolaget L M Ericsson
Boozt AB	Netel Group Holding AB	Telia Company AB
Castellum AB	Nordax Holding AB (publ)	Trelleborg AB
Clas Ohlson AB	Nordic Waterproofing Holding AB	Trelleborg Treasury AB
Diös Fastigheter AB	Nordnet AB	VitroLife AB
Electrolux Professional AB	Open Infra AB (publ)	Volvo Car AB
engcon AB	Orlen Capital AB (publ)	Volvo Treasury Aktiebolag
Fabege AB	OX2 AB (publ)	Wihlborgs Fastigheter AB
H & M Hennes & Mauritz AB	PION Group AB	YA Holding AB
Banks, Insurance companies, etc under the supervision of FI, Sweden's financial supervisory authority		
Avida Finans AB	Länsförsäkringar Göteborg och Bohuslän	Sparbanken Sjuhärad AB
Bergslagens Sparbank AB	Länsförsäkringar Hypotek AB (publ)	Sparbanken Skåne AB (publ)
BNP Paribas Cardif Försäkring AB	Länsförsäkringar Liv Försäkrings AB	SPK Pension Tjänstepensionsförening
BNP Paribas Cardif Livförsäkring AB	Länsförsäkringar Västerbotten	Svensk Handel Pension Tjänstepensionsförening
Dalarnas Försäkringsbolag	Nordax Bank AB	Svenska Handelsbanken
Danske Hypotek AB	Nordax Group AB	Svenska kyrkans tjänstepensionsförening
Försäkringsaktiebolaget Agria (publ)	Nordnet Bank AB	Telia Finance Aktiebolag
Gar-bo Försäkring AB	Nordnet Pensionsförsäkring AB	Telia Försäkring AB
IF Livförsäkring AB	PP Pension Tjänstepensionsförening	Volvo Car Försäkrings AB
If Skadeförsäkring AB	SBAB Bank AB (publ)	Volvo Group Insurance Försäkringsaktiebolag
Länsförsäkringar AB (publ)	Sparbanken Göinge AB	Wasa Kredit AB
Länsförsäkringar Bank Aktiebolag	Sparbanken i Karlshamn	Återförsäkringsab SKF
Länsförsäkringar Fondliv Försäkrings AB	Sparbanken Lidköping AB	
Länsförsäkringar Grupplivförsäkringsaktiebolag	Sparbanken Rekarne AB	



Deloitte refers to one or more of Deloitte Touche Tohmatsu Limited (“DTTL”), its global network of member firms, and their related entities (collectively, the “Deloitte organization”). DTTL (also referred to as “Deloitte Global”) and each of its member firms and related entities are legally separate and independent entities, which cannot obligate or bind each other in respect of third parties. DTTL and each DTTL member firm and related entity is liable only for its own acts and omissions, and not those of each other. DTTL does not provide services to clients. Please see www.deloitte.com/about to learn more.

Deloitte provides industry-leading audit and assurance, tax and legal, consulting, financial advisory, and risk advisory services to nearly 90% of the Fortune Global 500® and thousands of private companies. Our professionals deliver measurable and lasting results that help reinforce public trust in capital markets, enable clients to transform and thrive, and lead the way toward a stronger economy, a more equitable society and a sustainable world. Building on its 175-plus year history, Deloitte spans more than 150 countries and territories. Learn how Deloitte’s more than 415,000 people worldwide make an impact that matters at www.deloitte.com.

This communication contains general information only, and none of Deloitte Touche Tohmatsu Limited (“DTTL”), its global network of member firms or their related entities (collectively, the “Deloitte organization”) is, by means of this communication, rendering professional advice or services. Before making any decision or taking any action that may affect your finances or your business, you should consult a qualified professional adviser.

No representations, warranties or undertakings (express or implied) are given as to the accuracy or completeness of the information in this communication, and none of DTTL, its member firms, related entities, employees or agents shall be liable or responsible for any loss or damage whatsoever arising directly or indirectly in connection with any person relying on this communication. DTTL and each of its member firms, and their related entities, are legally separate and independent entities.