

CBAM Service Directory

Presentation of service packages for CBAM-reporting

May 2024, Deloitte SE | Tax and Legal | Indirect Tax- Customs

Table of Contents

03 WHAT IS CBAM?

Understanding the requirements of EU's new climate measures.

04 REQUIREMENTS

Requirements before and after transition period.

05 TIMELINE

Overview of the different implementation phases.

06 OUR CBAM SERVICES

Overview of our CBAM service packages.

07 ADDITIONAL SERVICES

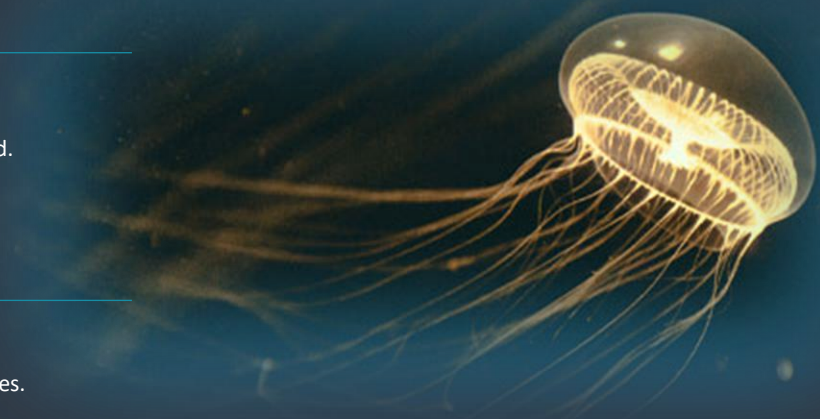
Selection of our service package.

08 SUPPORTING MATERIAL

Supporting materials for producers and importers of CBAM.

10 CONTACT US

Scan the QR-code to get in touch. We offer a 15 minute free consultation.



What is CBAM?

What is CBAM?

Main objectives of EU's Climate

01



- CBAM is designed to make sure that imported goods into the EU have a similar carbon cost as those produced within the EU, preventing companies from bypassing EU environmental rules and promoting global climate action.
- CBAM aims to prevent this by imposing a carbon price on imported goods equivalent to the carbon price that would have been paid if the goods were produced under the EU's carbon pricing rules.
- Reduce Global Emissions:
Encourages other countries to adopt stronger climate policies.

CBAM Segments

The segments that are included:

02



- Certain iron and steel products and products made from them, such as screws, nuts and washers.
- Certain fertilizers.
- Aluminums and certain aluminum products.
- Certain cement products.
- Certain chemicals.
- Electricity.
- **N.B The number of product areas covered by CBAM will most likely be expanded.**

Emissions Report

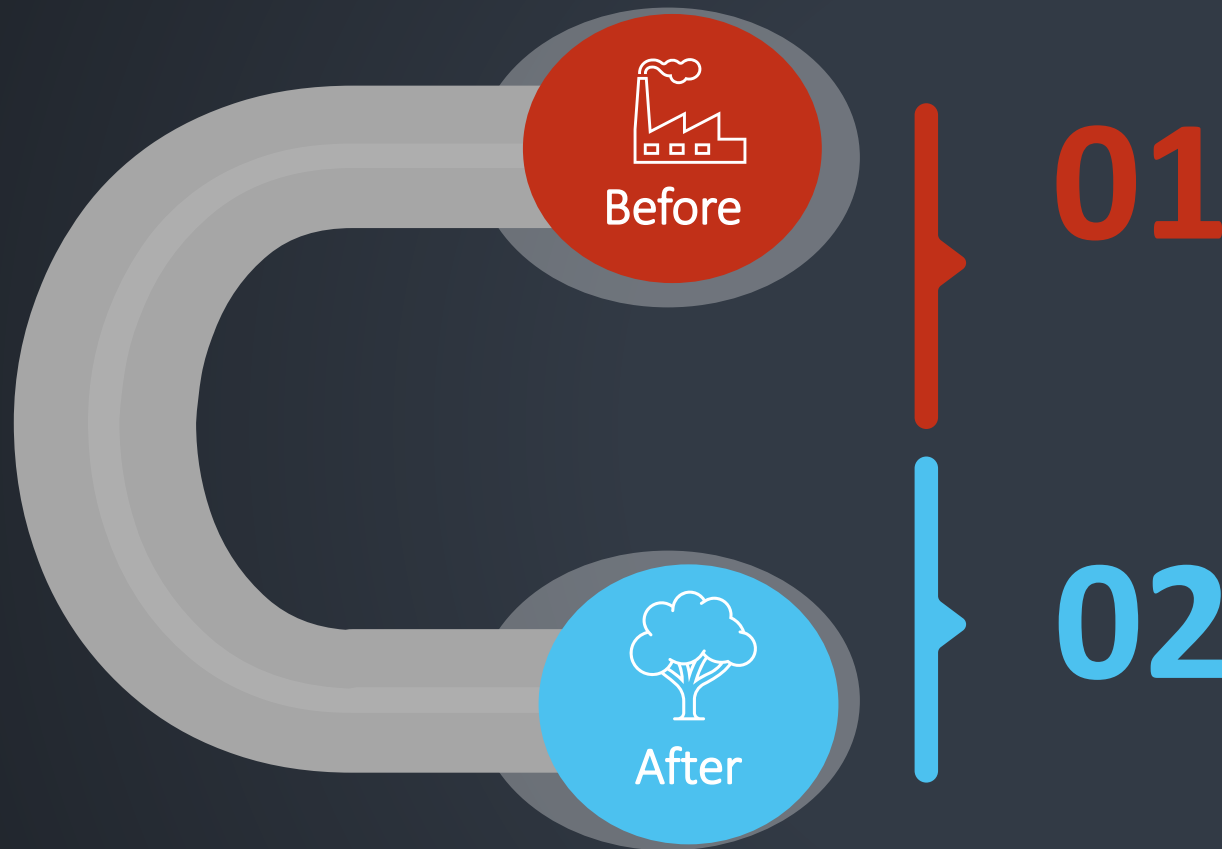
Emission accounting that is required:

03



- Direct emissions.
- Directly embedded emissions + Indirectly embedded emissions.
- Indirect emissions.
- Carbon price (paid locally or purchased from subcontractor).

Requirements during and after transition period



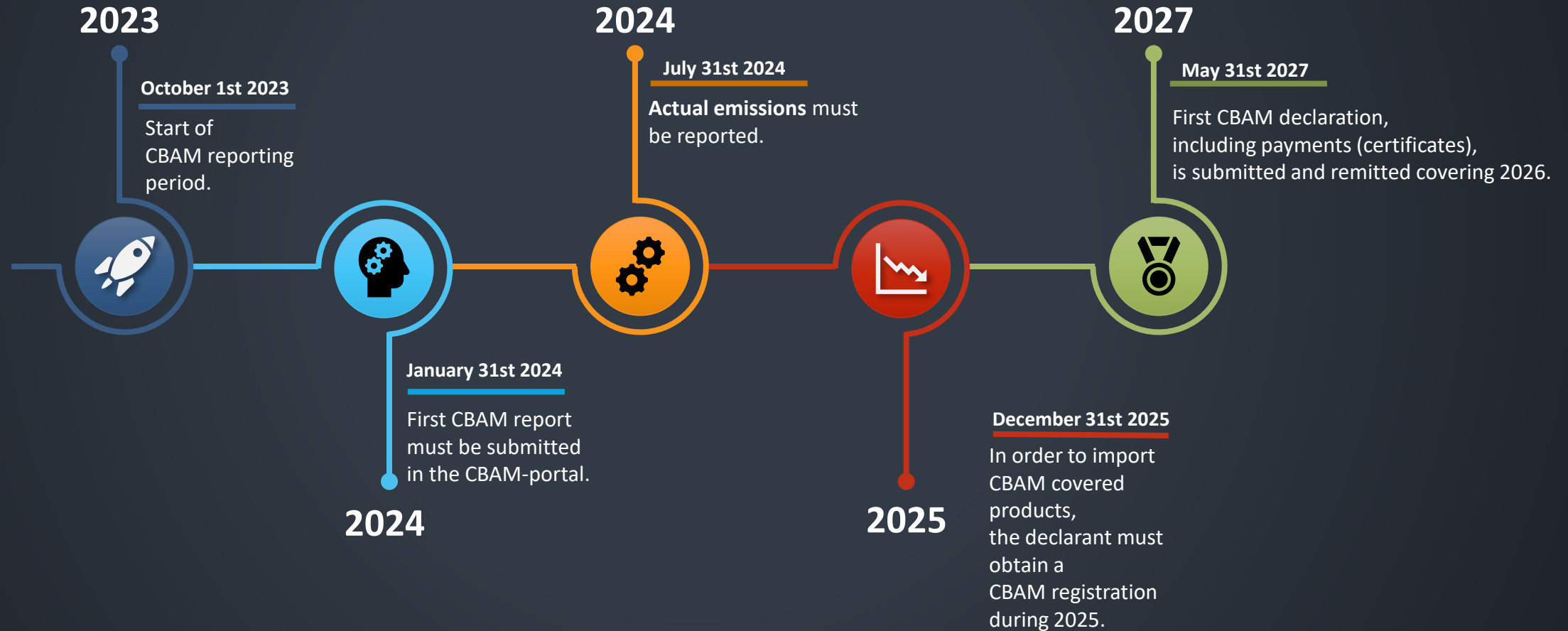
Transitional Period (until jan-26)

- ❑ Producers of CBAM goods outside the EU report emission values to the Importer in the EU.
- ❑ The importer reports the total amount of CO2 emissions in the CBAM portal.

Definite Period (from jan-26)

- ❑ Importers of goods covered by CBAM must purchase and submit CBAM certificates.
- ❑ The price of the certificates corresponds to the price of EU emission rights within the EU Emissions Trading System (EU ETS).

CBAM is introduced in phases



Overview of our services

LIGHT

INCLUDED SERVICES

- ✓ **Preparing for CBAM**
- ✓ **Registrations: EORI, Customs**
- ✓ **Access to the CBAM portal**
- ✓ **Review of CN- codes and country of origin**
- ✓ **Support in start-up:
Approach on how to collect CBAM-
data.**

MEDIUM

INCLUDED SERVICES

- ❖ **Light package included**
- ✓ **Actual reporting in the CBAM-portal**
- ✓ **Accounting emissions template +
manual**
- ✓ **Guidelines and supporting documents
for producer and importer of CBAM.**

FULL

INCLUDED SERVICES

- ❖ **Light + Medium package included**
- ✓ **Collection and review of emission-data from
producers**
- ✓ **Review of current set-up and procedures**
- ✓ **Implementation of suggested procedures
(SOP's)**
- ✓ **Optional compliance – freight, logistical
flows etc.**

Additional Services

Tailored Courses

We offer a variety of tailored courses within CBAM and other customs related procedures.

Classification of goods

Understanding the importance of having a correct classification of goods is crucial for imports and exports. We can assist in classification and reviewing of current data.

EU-ETS Certificates

Assistance in applying for CBAM certificates and registration.

Workshops

Workshops are a great method for having a collective approach and understanding.

Customs compliance

Review and suggestions on how to administer compliance related to import and export flows.

Logistics & Freight

Review of logistic flows, service providers and costs.

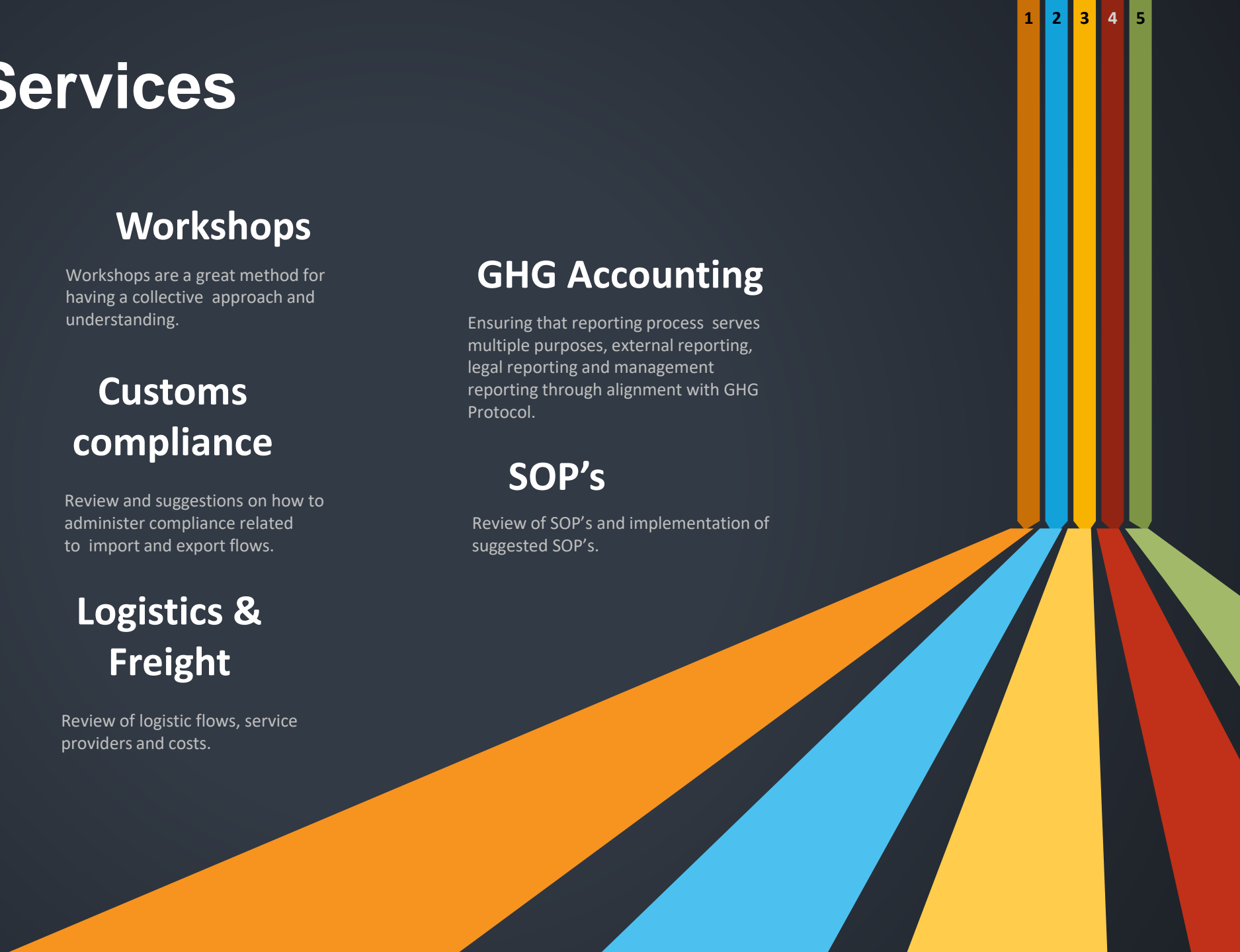
GHG Accounting

Ensuring that reporting process serves multiple purposes, external reporting, legal reporting and management reporting through alignment with GHG Protocol.

SOP's

Review of SOP's and implementation of suggested SOP's.

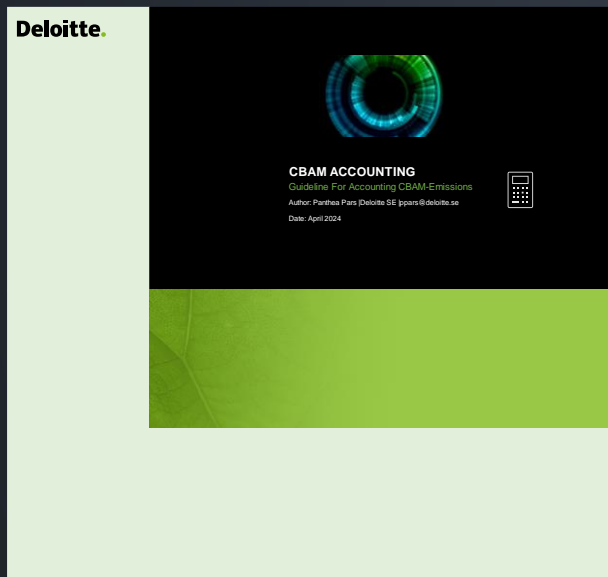
1 2 3 4 5



Supporting documents for Producers of CBAM

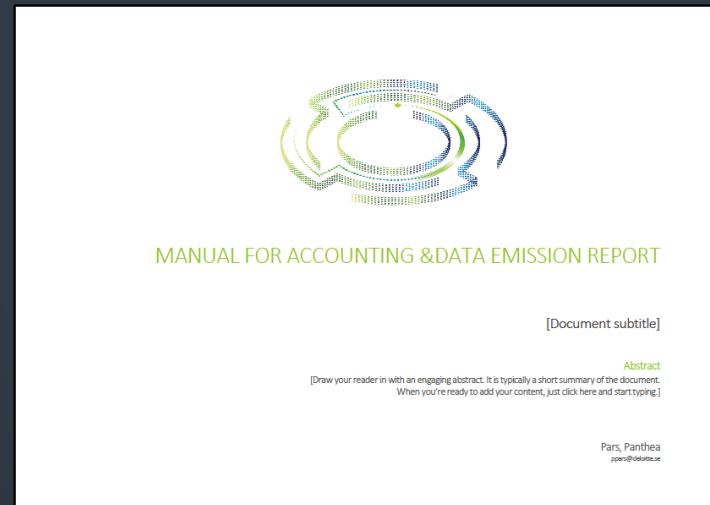
Accounting Template

Simplified Template based on the EU-Commission template for accounting and reporting emissions to EU-importer.



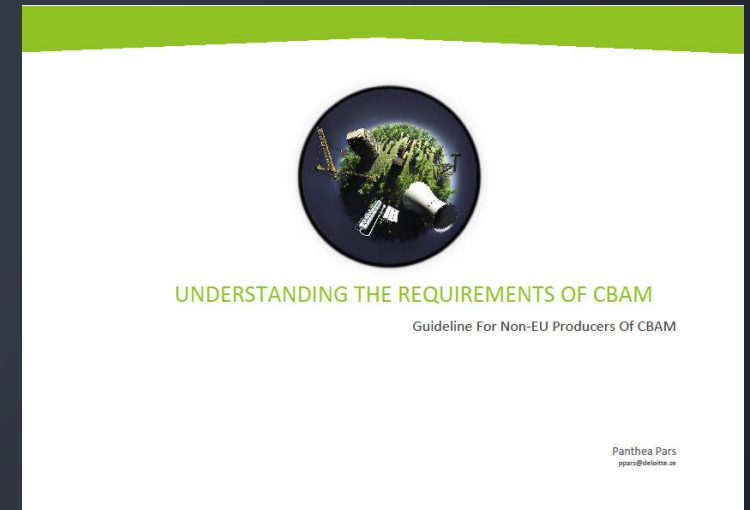
Manual Accounting Template

Manual for understanding methods, approaches on how to report emission data in the Accounting template.



How to collect your CBAM data

This document suggests a roadmap on how to approach your suppliers in requesting data. Approved methods and approach in how emissions are accounted.



Supporting material for Importers of CBAM

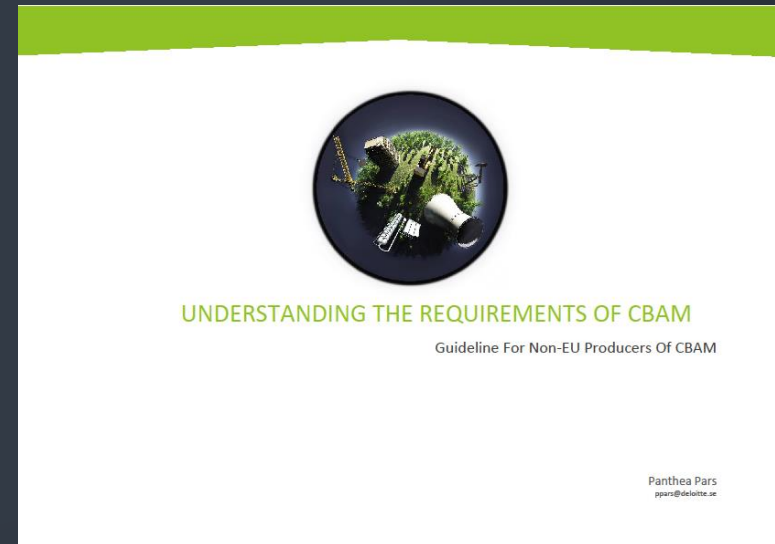
How to request CBAM-data

This template is adjusted to the EU-CBAM Portal. Simplified way of requesting data from your non-EU producers.



Template ready to upload in portal

In this template you can review the emission data from producer and other required data to declare in the Portal. The file also has a version for direct upload.



Contact us

Scan QR-code to schedule a 15 min free consultation with our CBAM experts.





Deloitte refers to one or more of Deloitte Touche Tohmatsu Limited (DTTL), its global network of member firms, and their related entities (collectively, the “Deloitte organization”). DTTL (also referred to as “Deloitte Global”) and each of its member firms and related entities are legally separate and independent entities, which cannot obligate or bind each other in respect of third parties. DTTL and each DTTL member firm and related entity is liable only for its own acts and omissions, and not those of each other. DTTL does not provide services to clients. Please see www.deloitte.com/about to learn more.

Deloitte provides industry-leading audit and assurance, tax and legal, consulting, financial advisory, and risk advisory services to nearly 90% of the Fortune Global 500® and thousands of private companies. Our people deliver measurable and lasting results that help reinforce public trust in capital markets, enable clients to transform and thrive, and lead the way toward a stronger economy, a more equitable society, and a sustainable world. Building on its 175-plus year history, Deloitte spans more than 150 countries and territories. Learn how Deloitte’s approximately 457,000 people worldwide make an impact that matters at www.deloitte.com.

This communication contains general information only, and none of Deloitte Touche Tohmatsu Limited (“DTTL”), its global network of member firms or their related entities (collectively, the “Deloitte organization”) is, by means of this communication, rendering professional advice or services. Before making any decision or taking any action that may affect your finances or your business, you should consult a qualified professional adviser.

No representations, warranties or undertakings (express or implied) are given as to the accuracy or completeness of the information in this communication, and none of DTTL, its member firms, related entities, employees or agents shall be liable or responsible for any loss or damage whatsoever arising directly or indirectly in connection with any person relying on this communication. DTTL and each of its member firms, and their related entities, are legally separate and independent entities.

© 2024 For more information, contact Deloitte AB.