

# Deloitte.

## LearningSolutions

by Deloitte

# Warning Signs! Spotting Red Flags and the Dark Side of Business

14 CPE hours



## Target Audience

Business leaders, board directors, finance professionals, accountants, compliance officers, and individuals seeking to enhance their understanding of unethical practices, and fraud detection.

## Delivery Mode

Physical Seminar |  
Live Webinar

## Facilitators

**Sarjit Singh**  
Senior Advisor  
Leader, Deloitte Learning  
Solutions Southeast Asia

## Introduction

The course provides A highly rated training course with great reviews from past participants that adopts the Harvard-inspired case method approach to help you identify the danger signs of creative accounting so that you may bring your organisation to a higher ethical platform by detecting such fraud and take relevant factors into consideration in order to make ethical decisions. This highly interactive course provides you the state-of-the-art weapons you need to identify early warnings signs before earnings come out and the flapping red flags before the damage is irreversible.

China Evergrande, FTX, Silicon Valley Bank, Hyflux and Cordlife are just some of the many cases making the news in recent times. The number of public listed companies making headlines for the arrest of both their executive and non-executive directors seems to be growing. What is the common thread that runs through these incidents, sometimes resulting in directors and senior management facing possible criminal charges? What are the greatest risks that all directors and management of companies face? What can you do to avoid this grim situation?

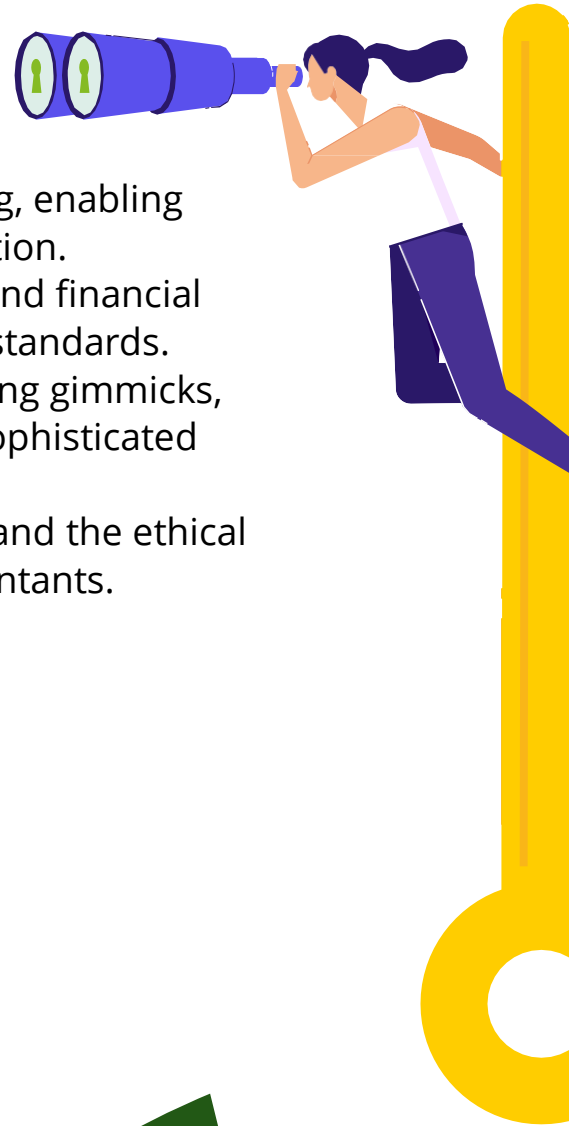
We will share with you the '36 Warning Signs' to help you identify fraudulent financial reporting, assets misappropriation, bribery, and corruption.

You will also learn the 6 categories of accounting gimmicks and the 7 fundamental financial tricks that companies have used to mislead auditors and investors for decades and use that knowledge to boost your organisation to a higher ethical platform. You will also get an update on how these accounting gimmicks are being used in today's technologically advanced, financially savvy investment world



## Learning Objectives

- Learn to spot warning signs of creative accounting, enabling proactive ethical decision-making in the organization.
- Gain insight into historical accounting gimmicks and financial tricks, applying this knowledge to uphold ethical standards.
- Update understanding of contemporary accounting gimmicks, empowering ethical decision-making in today's sophisticated investment landscape.
- Understand the language of forensic accounting and the ethical requirements that apply to all professional accountants.



# Registration

## Corporate

Empower your finance team to upskill and reskill. We partner with you to curate programmes unique to your organisational needs in consistent and measurable practice throughout.

[Contact us](#) to kick start your learning journey with [Learning Solutions](#) by Deloitte.

## Enquiries

General enquiries (i.e., courses, corporate training, billing related matters), please contact us at [seadlsenquiries@deloitte.com](mailto:seadlsenquiries@deloitte.com)

Enquiries relating to DLS platform, please contact us at [seadls@deloitte.com](mailto:seadls@deloitte.com)

**Payment (to be made upon receipt of the tax invoice)**

## Online Payment

**Telegraphic transfer** is to be forwarded to Australia and New Zealand Banking Group Limited.

**A/C Name:** Deloitte & Touche Business Advisory Pte. Ltd.

**Singapore Dollar A/C:** 17947300001

**US Dollar A/c No.:** 17947300013

**SWIFT Code:** ANZBSGSXXX

**Bank Code:** 7931

**Branch Code:** 050

Kindly indicate **invoice number** under remarks and/or comments.

**PayNow** (Strictly for payment in SGD)

In your PayNow application, kindly select Unique Entity Number (UEN) and enter 199301778HANZ, Deloitte & Touche Business Advisory Pte Ltd.

Kindly enter **Invoice number** under "Transfer Details".

## Registration and Payment for Deloitte x Enterprise Singapore Courses

Enjoy 70% funding by Enterprise Singapore for Eligible Singapore companies. You may click [here](#) or scan the QR code to register.



For institutions of higher learning, charities, IPCs, and public sector agencies not eligible for EnterpriseSG course subsidy, please contact [seadlsenquiries@deloitte.com](mailto:seadlsenquiries@deloitte.com) for more information on applicable discounted rate offered by Deloitte.

Should you have queries on **ESG Essentials & Sustainable Finance** courses, you may write in to [seadlsenquiries@deloitte.com](mailto:seadlsenquiries@deloitte.com)

## Registration and Payment for Digital Transformation Courses

For **Digital Transformation** courses, you may proceed with your registration and payment from the respective links in our [Course Catalogue](#).

Should you have queries on **Digital Transformation** courses, you may write in to [searaeducation@deloitte.com](mailto:searaeducation@deloitte.com).





Deloitte refers to one or more of Deloitte Touche Tohmatsu Limited (“DTTL”), its global network of member firms, and their related entities. DTTL (also referred to as “Deloitte Global”) and each of its member firms are legally separate and independent entities. DTTL does not provide services to clients. Please see [www.deloitte.com/about](http://www.deloitte.com/about) to learn more.

Deloitte is a leading global provider of audit and assurance, consulting, financial advisory, risk advisory, tax and related services. Our network of member firms in more than 150 countries and territories serves four out of five Fortune Global 500® companies. Learn how Deloitte’s approximately 286,000 people make an impact that matters at [www.deloitte.com](http://www.deloitte.com).

#### **About Deloitte Southeast Asia**

Deloitte Southeast Asia Ltd – a member of Deloitte Touche Tohmatsu Limited comprising Deloitte practices operating in Brunei, Cambodia, Guam, Indonesia, Lao PDR, Malaysia, Myanmar, Philippines, Singapore, Thailand and Vietnam – was established to deliver measurable value to the particular demands of increasingly intra-regional and fast growing companies and enterprises.

Comprising approximately 370 partners and 9,740 professionals in 25 office locations, the subsidiaries and affiliates of Deloitte Southeast Asia Ltd combine their technical expertise and deep industry knowledge to deliver consistent high quality services to companies in the region.

All services are provided through the individual country practices, their subsidiaries and affiliates which are separate and independent legal entities.

#### **About Deloitte Singapore**

In Singapore, services are provided by Deloitte & Touche LLP and its subsidiaries and affiliates.

This communication contains general information only, and none of Deloitte Touche Tohmatsu Limited, its member firms, or their related entities (collectively, the “Deloitte Network”) is, by means of this communication, rendering professional advice or services. Before making any decision or taking any action that may affect your finances or your business, you should consult a qualified professional adviser. No entity in the Deloitte Network shall be responsible for any loss whatsoever sustained by any person who relies on this communication.

Deloitte & Touche LLP (Unique entity number: T08LL0721A) is an accounting limited liability partnership registered in Singapore under the Limited Liability Partnerships Act (Chapter 163A).