



**M&A: Investing for impact**  
Trusted. Transformational. Together.

21 October 2024

# M&A: Investing for impact



**Keoy Soo Earn**

Deloitte Private Leader  
Deloitte Southeast Asia



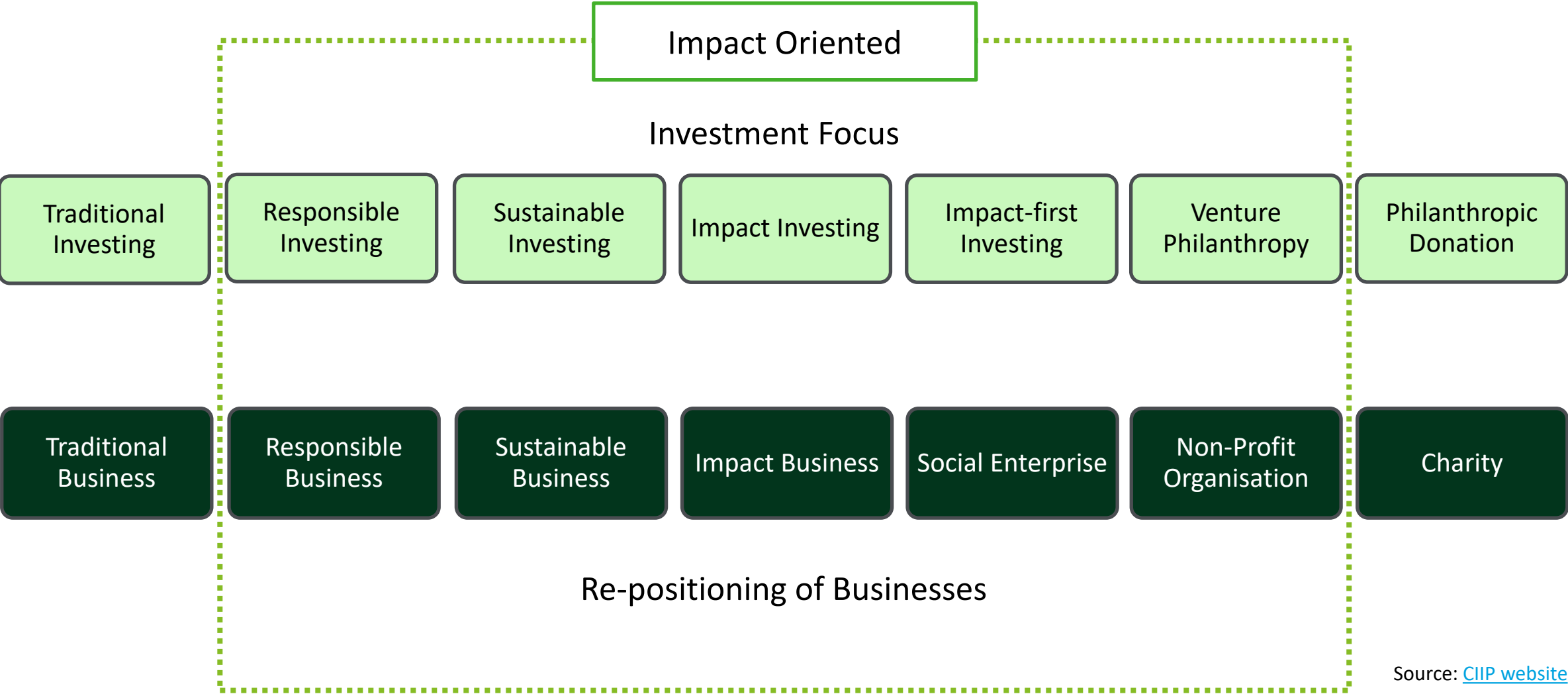
**Stuart Burnhope**

Private Markets Tax Partner  
Deloitte United Kingdom



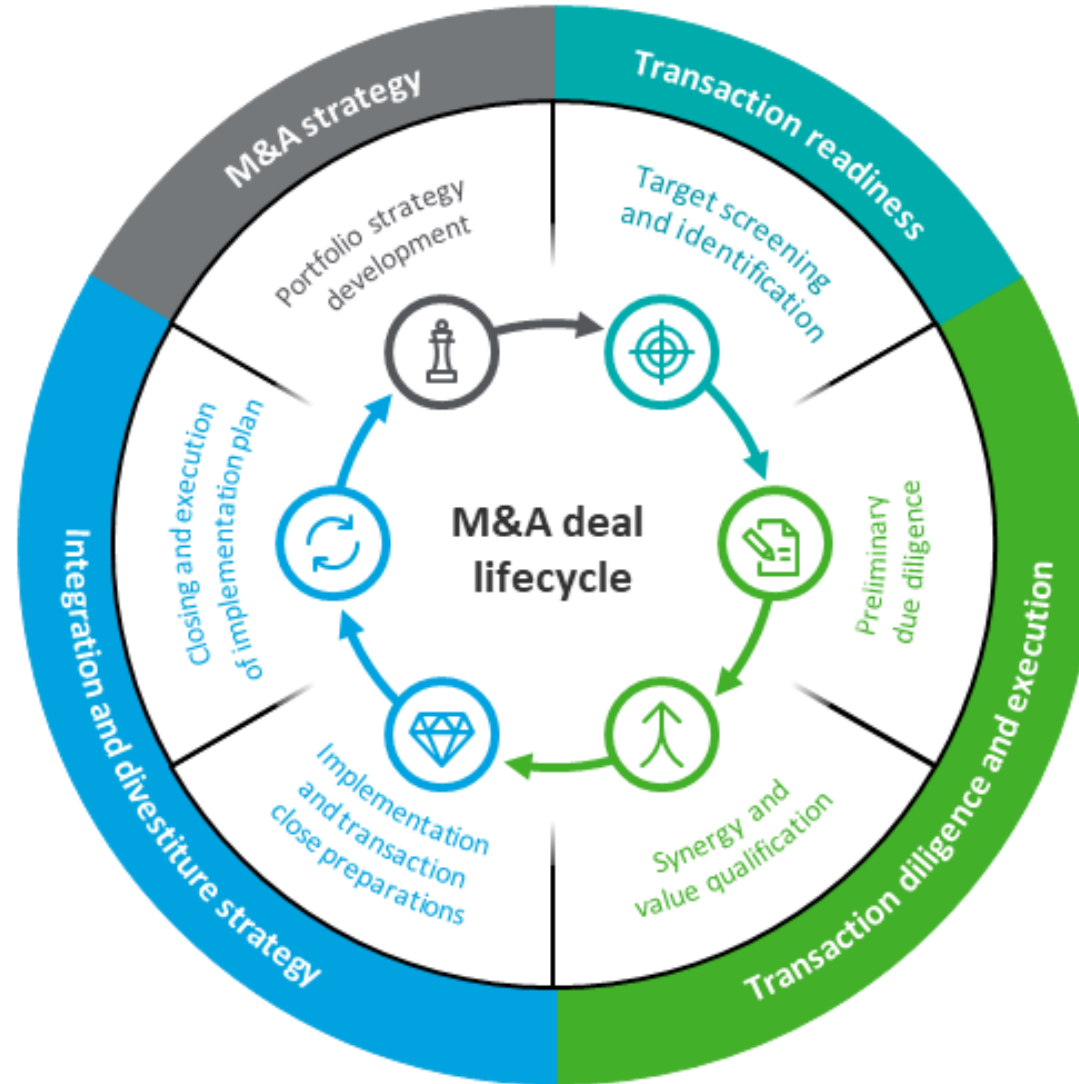
# Sustainable Development Goals (SDGs)

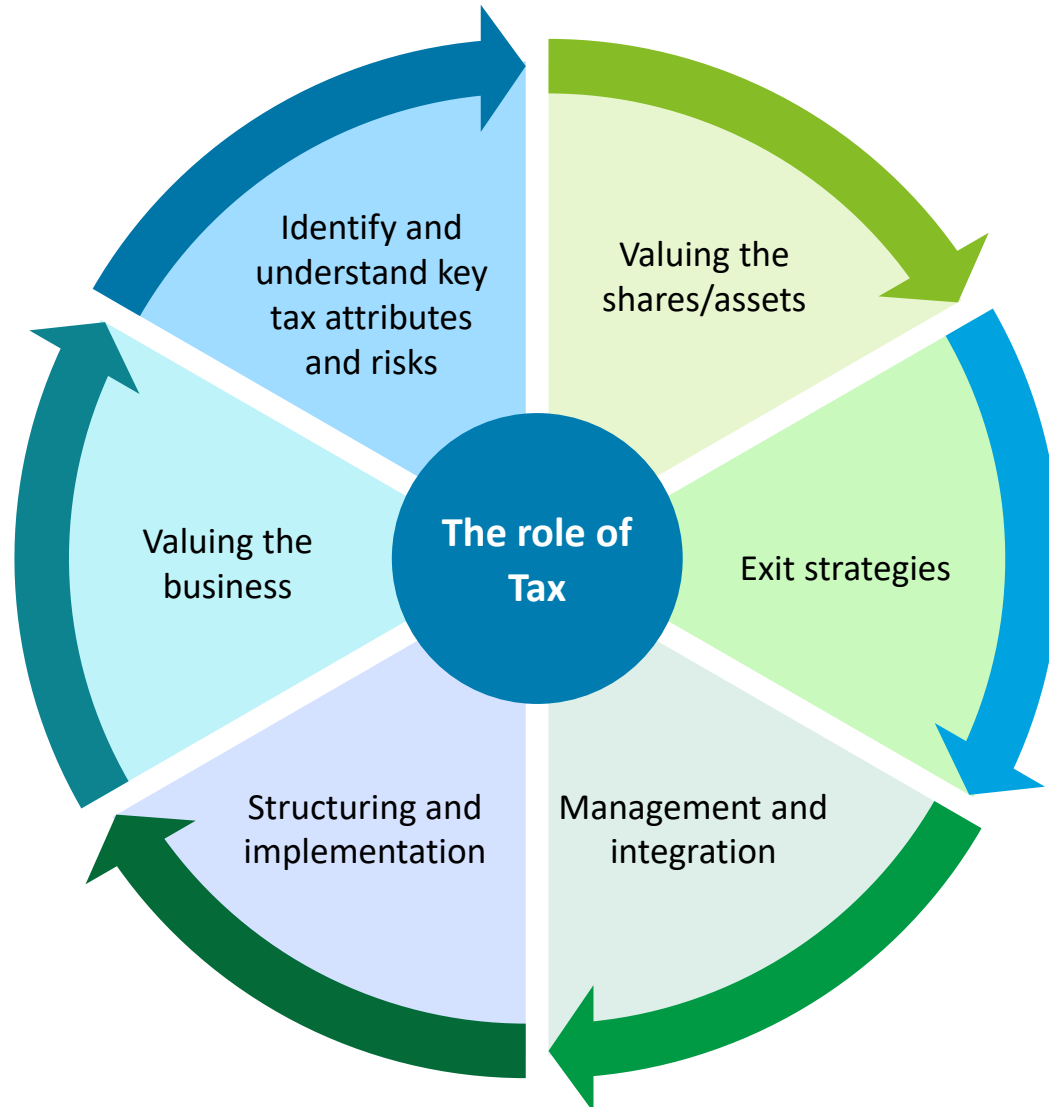




Source: [CIIP website](#)





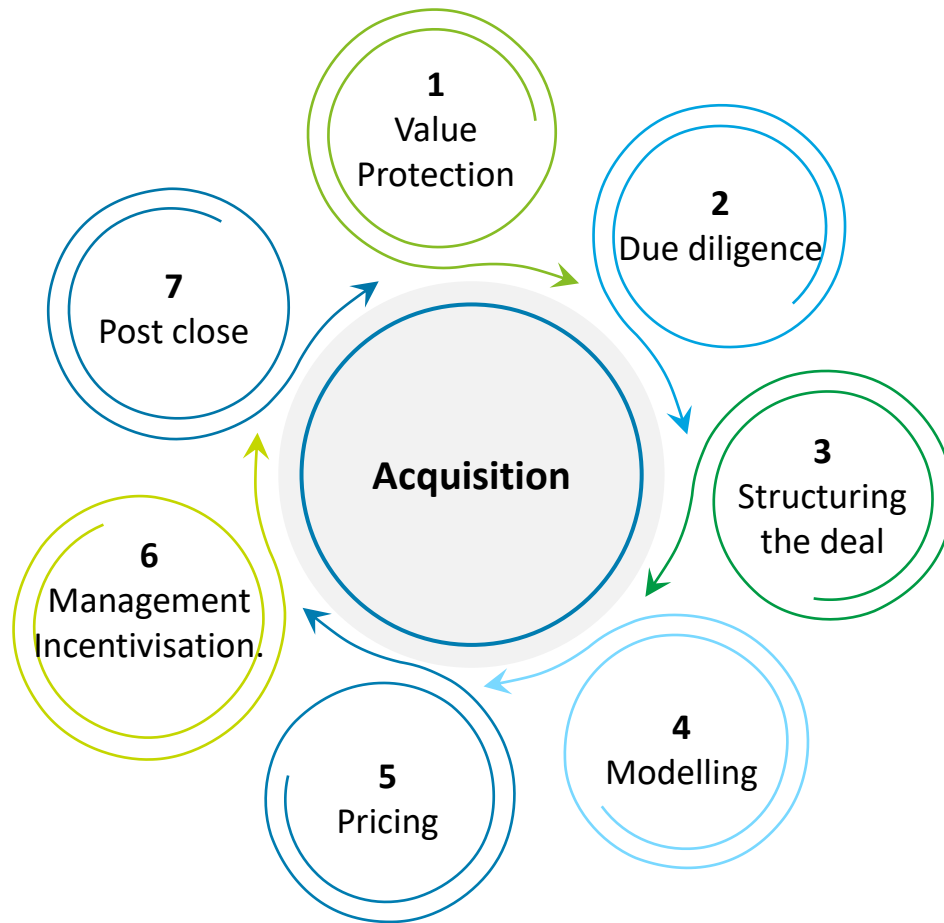


Tax can arise in multiple forms, including corporate taxes, withholding taxes, employment taxes and indirect taxes (VAT, transfer taxes and stamp duties)

Tax is complex and can represent a significant cost. Getting it wrong can therefore result in considerable and unnecessary value leakage.

On the other hand, getting it right can ensure value is maximised.

Tax, therefore, should play a key role throughout the transaction process.

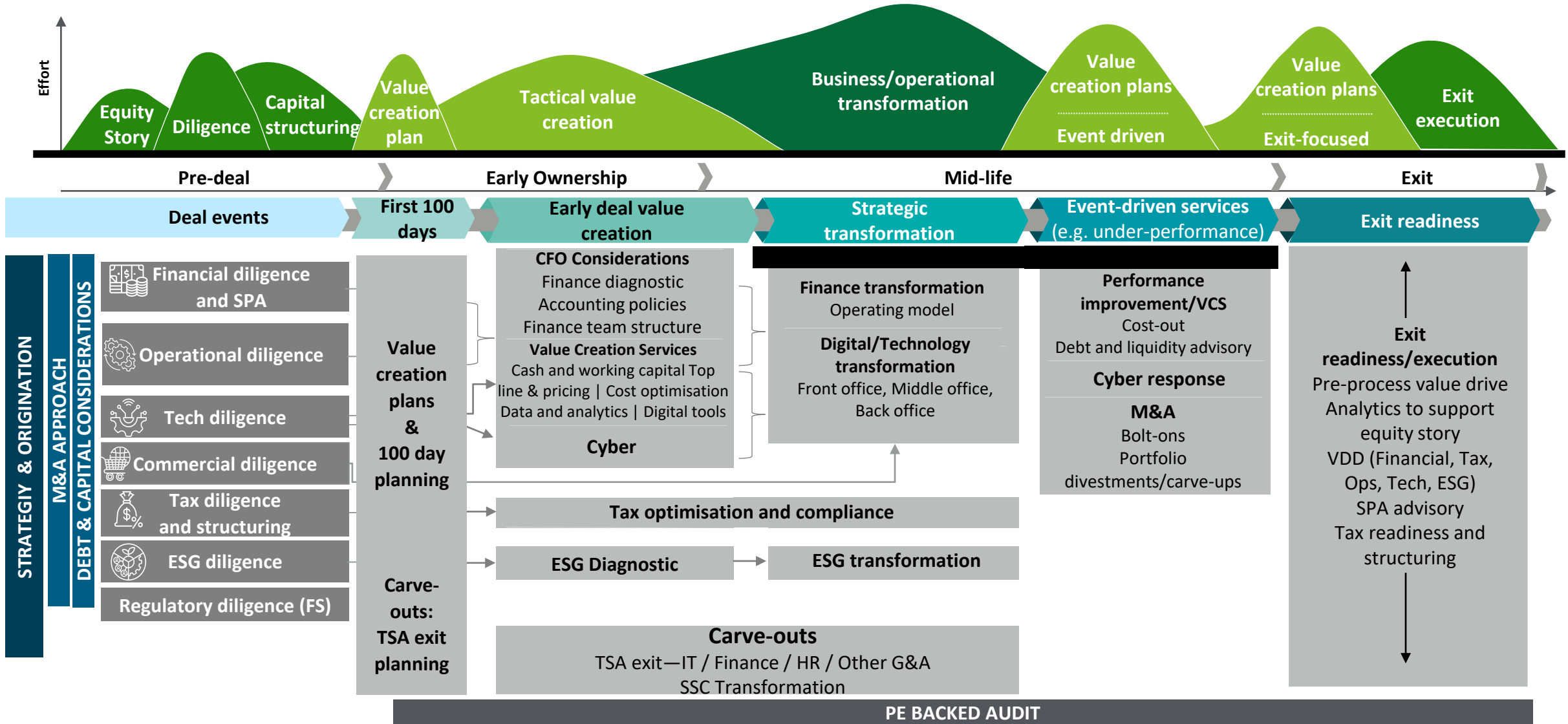


- 01 Value protection
- 02 Key tax inputs—due diligence
- 03 Key tax inputs—structuring the deal
- 04 Key tax inputs—modelling
- 05 Key tax inputs—pricing
- 06 Key tax inputs—management incentivisation
- 07 Key tax inputs—Post close



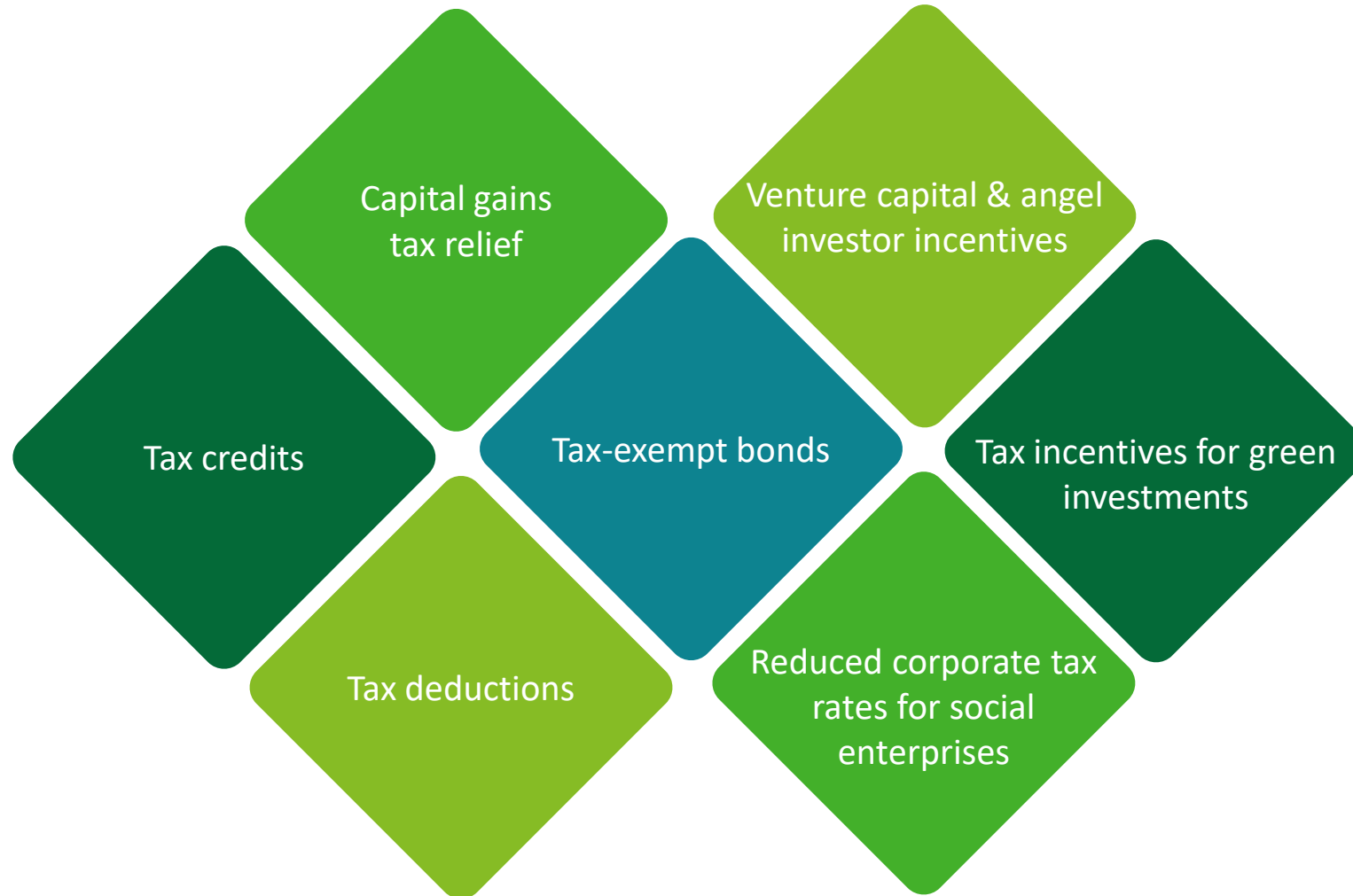


# Investment: Key considerations across the E2E lifecycle





Examples of key tax incentives adopted by governments across the world



# Deloitte.

## Private

Deloitte refers to one or more of Deloitte Touche Tohmatsu Limited (“DTTL”), its global network of member firms, and their related entities (collectively, the “Deloitte organization”). DTTL (also referred to as “Deloitte Global”) and each of its member firms and related entities are legally separate and independent entities, which cannot obligate or bind each other in respect of third parties. DTTL and each DTTL member firm and related entity is liable only for its own acts and omissions, and not those of each other. DTTL does not provide services to clients. Please see [www.deloitte.com/about](http://www.deloitte.com/about) to learn more.

Deloitte Asia Pacific Limited is a company limited by guarantee and a member firm of DTTL. Members of Deloitte Asia Pacific Limited and their related entities, each of which are separate and independent legal entities, provide services from more than 100 cities across the region, including Auckland, Bangkok, Beijing, Hanoi, Hong Kong, Jakarta, Kuala Lumpur, Manila, Melbourne, Osaka, Seoul, Shanghai, Singapore, Sydney, Taipei and Tokyo.

This communication contains general information only, and none of Deloitte Touche Tohmatsu Limited (“DTTL”), its global network of member firms or their related entities (collectively, the “Deloitte organization”) is, by means of this communication, rendering professional advice or services. Before making any decision or taking any action that may affect your finances or your business, you should consult a qualified professional adviser.

No representations, warranties or undertakings (express or implied) are given as to the accuracy or completeness of the information in this communication, and none of DTTL, its member firms, related entities, employees or agents shall be liable or responsible for any loss or damage whatsoever arising directly or indirectly in connection with any person relying on this communication. DTTL and each of its member firms, and their related entities, are legally separate and independent entities.