

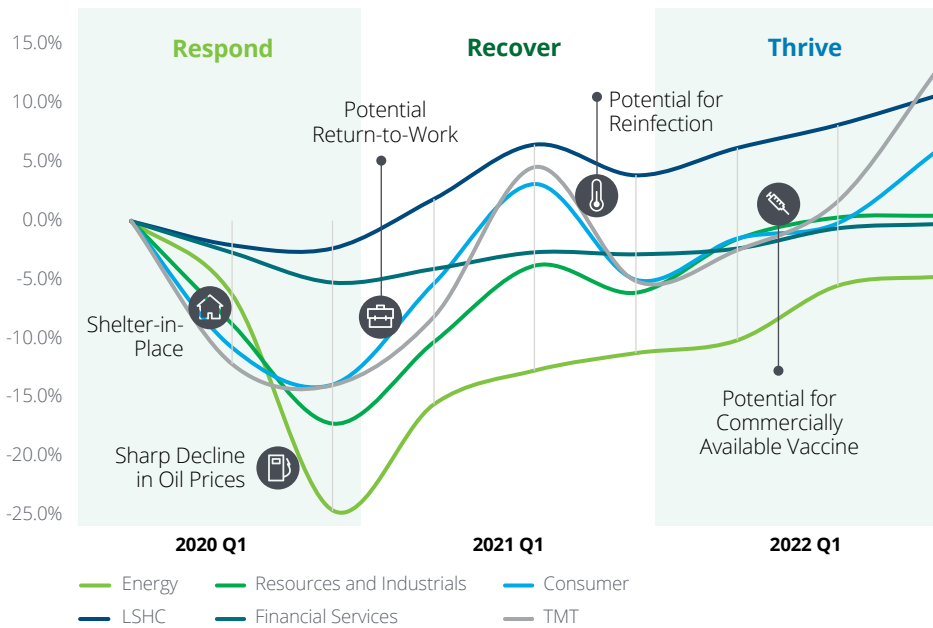
## Valuation in a post- COVID-19 world

### Price versus Intrinsic Value



# Price versus Intrinsic Value

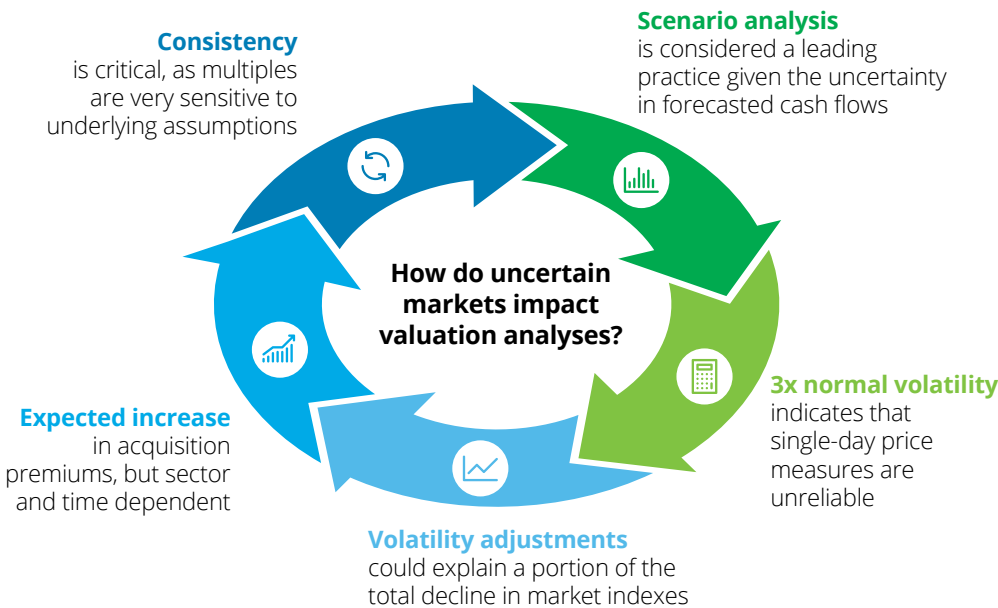
As the graph below shows, analyst forecasts can provide insight into COVID-19 recovery patterns by sector based on degree of exposure to anticipated milestones. Operational and financial decision-making can influence the speed and magnitude of this trajectory.



### Important questions

- Is market pricing representative of fair value?
- How do I develop financial scenarios in the current environment?
- Do acquisition premiums expand in volatile markets?
- Are historical market multiples relevant benchmarks?

Source: S&P Capital IQ. Based on S&P 500 analyst EPS growth percentage forecasts by sector; coupled with example milestones that may explain trends



### Common benefits of a efficient valuation process

- Establishes a market participant view on value and differentiates between price and intrinsic value
- Facilitates understanding of the relationship between forecast cash flows and required rates of return
- Leverages industry experience in developing probability-adjusted cash flow scenarios to reflect incremental risk from impact of COVID-19 on your business
- Calibrates recent investments/acquisitions to reflect current market conditions

# Is market pricing indicative of my business value?

## Volatile markets create wide range of control premiums

Based on data sourced from S&P Capital IQ, our historical study shows that equity premiums increased significantly following the market decline in 2008, which was attributed to asymmetric information as management actions to mitigate impact were not evident between filings and investor relation calls.

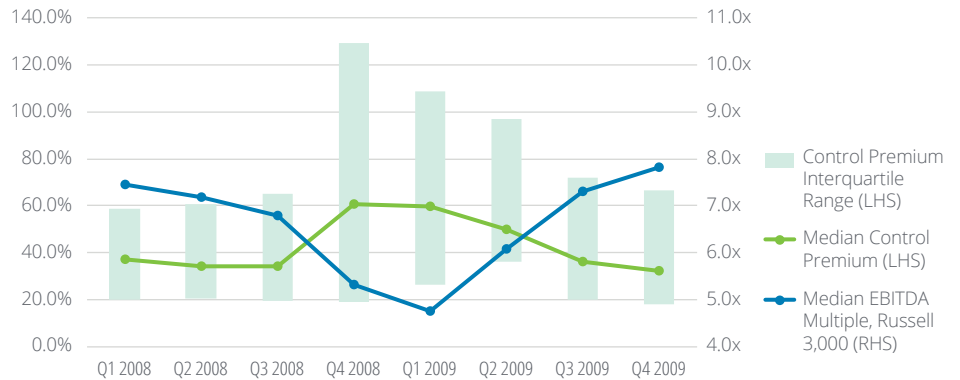
## During such times, there is an inverse relationship between control premiums and multiples

Are market multiples reflective of your business value?

## Considerations

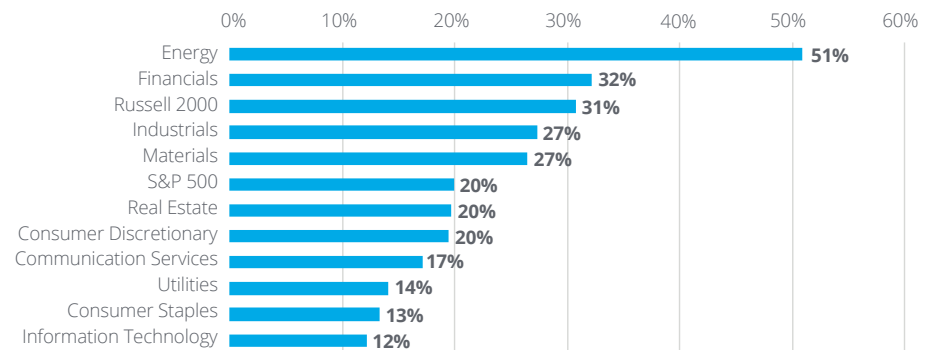
A company cannot simply ignore recent declines in their stock price, since the declines are indicative of factors that a company should consider. What parts of the underlying business have been affected? How do these changes affect the company as a whole?

## Control Premiums and Market Multiples, 2008 - 2009



Source: S&P Capital IQ

## Loss in Sector/Index values since December 31, 2019



Source: S&P Capital IQ, S&P 500 publicly traded companies

## How are we helping clients respond?

 <p><b>Forecasting and Scenario Planning</b></p> <p>Cash flow forecasting and scenario planning to help understand how the COVID-19 crisis will affect financials, liquidity, and how operations may respond to management decisions</p>	 <p><b>Financial Reporting</b></p> <p>Observed market declines may represent a trigger to perform an interim impairment test of goodwill and long-lived assets</p>	 <p><b>Portfolio Valuation Services</b></p> <p>Portfolio valuation services can help enhance transparency and consistency to meet stakeholder requirements, reduce perceived conflicts of interest, and mitigate risks across an organization</p>
--	---	--

## Deloitte Valuation & Modeling Services

- 1 Transaction & Valuation Advisory**  
 Advise clients on strategic decisions, financial analysis, and valuation related to M&A transactions.
- 2 Modeling**  
 Assist clients in the resolution of the most significant business decisions they face by designing bespoke planning and decision support tools.
- 3 Regulatory & Compliance Valuation**  
 Provide valuation analyses for tax, financial reporting or other regulatory, compliance, or management planning requirements.

# Let's talk



## **Andrew Ooi**

### **Partner, Singapore and Southeast Asia Leader**

Valuation & Modelling Services

Phone: +65 6216 3139

Mobile: +65 9768 2852

Email: [anooi@deloitte.com](mailto:anooi@deloitte.com)



## **Leonard Woo**

### **Partner**

Valuation & Modelling Services

Phone: +65 6800 3999

Mobile: +65 8869 7389

Email: [lwoo@deloitte.com](mailto:lwoo@deloitte.com)

# Deloitte.

Deloitte refers to one or more of Deloitte Touche Tohmatsu Limited ("DTTL"), its global network of member firms, and their related entities (collectively, the "Deloitte organization"). DTTL (also referred to as "Deloitte Global") and each of its member firms and related entities are legally separate and independent entities, which cannot obligate or bind each other in respect of third parties. DTTL and each DTTL member firm and related entity is liable only for its own acts and omissions, and not those of each other. DTTL does not provide services to clients. Please see [www.deloitte.com/about](http://www.deloitte.com/about) to learn more.

Deloitte Asia Pacific Limited is a company limited by guarantee and a member firm of DTTL. Members of Deloitte Asia Pacific Limited and their related entities, each of which are separate and independent legal entities, provide services from more than 100 cities across the region, including Auckland, Bangkok, Beijing, Hanoi, Hong Kong, Jakarta, Kuala Lumpur, Manila, Melbourne, Osaka, Seoul, Shanghai, Singapore, Sydney, Taipei and Tokyo.

## **About Deloitte Singapore**

In Singapore, services are provided by Deloitte & Touche LLP and its subsidiaries and affiliates.

This communication contains general information only, and none of Deloitte Touche Tohmatsu Limited ("DTTL"), its global network of member firms or their related entities (collectively, the "Deloitte organization") is, by means of this communication, rendering professional advice or services. Before making any decision or taking any action that may affect your finances or your business, you should consult a qualified professional adviser.

No representations, warranties or undertakings (express or implied) are given as to the accuracy or completeness of the information in this communication, and none of DTTL, its member firms, related entities, employees or agents shall be liable or responsible for any loss or damage whatsoever arising directly or indirectly in connection with any person relying on this communication. DTTL and each of its member firms, and their related entities, are legally separate and independent entities.