



Deloitte GRC Solution

IT Vulnerability

April 2020

The challenges

The increase in cyber defenses to tackle cyber security challenges makes it harder for organisation to clearly mitigate cyber security risks



Fragmented view on IT Security

IT Security information are not easily consolidated leading to partial information available to organisation



Complex Layers of IT Protection

Different layers of IT Security tools leads to difficulties to consolidate IT Security information



Rapid Shift In Technology

The ever changing technology scene leads to constant security updates and emerging technology



Difficulties in Data Protection

Abundance of data leads to difficulties in maintaining data privacy and data protection



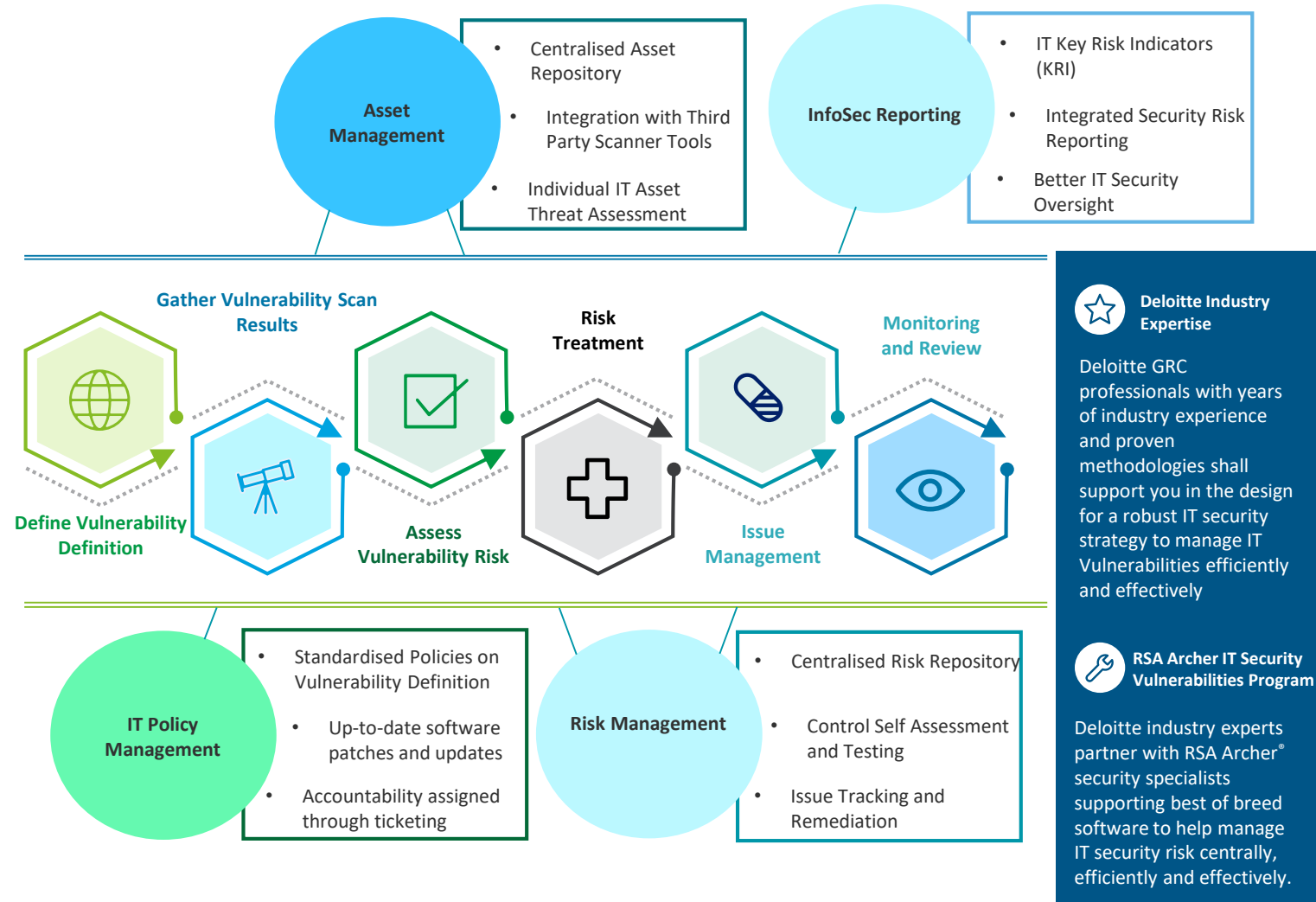
Limited Visibility for Oversight

Unconsolidated IT Information without a comprehensive reporting leads to low visibility for oversight

Our Solution – IT Vulnerability Accelerator

The Deloitte IT Vulnerability Accelerator has been developed using extensive industry experience underpinned by the RSA Archer® GRC platform.

This solution helps organisation consolidate and assess vulnerabilities to deploy rapid remediation plans ensuring cyber security resilience



The benefits

Benefits from the IT Vulnerability accelerator are as follows:



Consolidated IT Security View

IT Information stored in common repository providing insightful information on areas of IT Risks



Better IT Security Resilience

Better monitoring of IT Security Risk provides better understanding of IT Risk in each defense layer



Staying Up-to-Date

Better identification of new technology or updates from vulnerabilities scan integration reduces the risk of IT breaches



Better Data Governance

Data Governance establishes frameworks to increase protection and integrity of data



Real-Time Reporting

Comprehensive IT Security Risk information provides valuable insights for better assessment and remediation of risks

RSA Archer Close Up – IT & Security Risk Management

Third Party Management | Regulatory and Corporate Compliance | Incident | IT Control Assurance | IT Risk Management | Enterprise Risk Management | SHOW ALL | JoWee

Dashboard: IT Risk Manager | Welcome, JoWee Yeap | Options

IT Risk Register

Risk	Description	Inherent Risk	Residual Risk	Adjusted Qualitative Residual Risk	Procedure ID	Procedure Name	Compliance
2013 HIPAA Revisions	This risk register item will be used to track risk analysis & remediation activities associated with HIPAA compliance activities.				53A_AC-2(2)	Temporary and Emergency Account Usage	✓
Access Control		Not Rated	Not Rated	Not Rated	CP-143343	Accessing Personal Data	✓
Access Control		Not Rated	Not Rated	Not Rated	ATCP-24667	Each user should have a unique Logon ID.	Open
Access Control		Not Rated	Not Rated	Not Rated	CIS-00004	1.1.4 Minimum password length	Open
Access Control	Operational fraud, loss of intellectual property, and loss of customer	Not Rated	Not Rated	Not Rated	CIS-00005	1.1.5 Password must meet complexity requirements	Open

Past Due Assessments

Past Due Risk Assessments

Questionnaire ID	Due Date	Progress Status	Risk Project
308499	11/30/2015	35%	ApplyTWO Implementation
334246	4/20/2018	100%	2018 IT Risk Assessment

Page 1 of 1 (2 records)

Risk Project Allocation Reports

Risk Project Allocation

Month	Open	In Progress	Closed
July 2016	3	0	0
August 2016	2	2	0
September 2016	1	1	0
October 2016	1	0	0
February 2017	0	0	2
April 2017	1	0	0
October 2017	0	0	1
November 2017	0	0	1
December 2017	0	0	1
May 2018	0	0	1

IT Risk Project Work Queue

Project Name	Risk Manager	Expected End Date	Scope of Assessment	Overall Risk Assessment Level	Final Overall Risk Level
EMEA Services Risk Assessment		7/14/2016	Business Process Business Unit		

Project Remediation Efforts

Year	High	Medium	Low
2015	1	1	0
2013	1	0	0

Version 6.5 P6



For more information, please contact:

Philip Chong

Executive Director, Risk Advisory

pchong@deloitte.com

Annie Lim

Director, Risk Advisory

anim@deloitte.com

Deloitte refers to one or more of Deloitte Touche Tohmatsu Limited (“DTTL”), its global network of member firms, and their related entities. DTTL (also referred to as “Deloitte Global”) and each of its member firms and their affiliated entities are legally separate and independent entities. DTTL does not provide services to clients. Please see www.deloitte.com/about to learn more.

Deloitte is a leading global provider of audit and assurance, consulting, financial advisory, risk advisory, tax and related services. Our network of member firms in more than 150 countries and territories serves four out of five Fortune Global 500® companies. Learn how Deloitte’s approximately 286,000 people make an impact that matters at www.deloitte.com.

About Deloitte Asia Pacific Limited

Deloitte Asia Pacific Limited is a company limited by guarantee and a member firm of DTTL. Members of Deloitte Asia Pacific Limited and their related entities provide services in Australia, Brunei Darussalam, Cambodia, East Timor, Federated States of Micronesia, Guam, Indonesia, Japan, Laos, Malaysia, Mongolia, Myanmar, New Zealand, Palau, Papua New Guinea, Singapore, Thailand, The Marshall Islands, The Northern Mariana Islands, The People’s Republic of China (incl. Hong Kong SAR and Macau SAR), The Philippines and Vietnam. In each of these, operations are conducted by separate and independent legal entities.

About Deloitte Singapore

In Singapore, services are provided by Deloitte & Touche LLP and its subsidiaries and affiliates.

All services are provided through the individual country practices, their subsidiaries and affiliates which are separate and independent legal entities.