

## Electronic-Board Effectiveness Evaluation (E-BEE)

The Deloitte way

Elevate your board's performance today with Deloitte's cutting-edge solution—where innovation meets governance.



## The all-in-one solution

The drive towards board evaluations is primarily shaped by the changing regulatory landscapes both at the domestic and global levels. From a domestic standpoint, the Malaysian Code on Corporate Governance (“MCCG”) and Bursa Listing requirements calls upon listed issuers to undertake formal and objective annual evaluations to determine the effectiveness of the board, its committees and individual directors. Looking beyond the Malaysian frontier, the practice of conducting annual board assessments is increasingly recognised as an essential cornerstone of corporate governance, as recommended by various global guidelines and principles.

Leveraging on Deloitte’s extensive experience in facilitating board evaluations, the E-BEE is envisioned as an innovative, end-to-end solution to elevate the board evaluation process from a paper-based modality to a data driven digital solution. In an era where technology and artificial intelligence are reshaping corporate practices, the E-BEE tool is highly customisable to suit the unique needs of corporate boards across a myriad of industries. Designed with simplicity in mind, the E-BEE goes above and beyond traditional survey platforms by offering a comprehensive suite of features tailored to streamline and enhance the evaluation process. Ultimately, the E-BEE tool optimises the traditional board evaluation process by removing inefficiencies associated with manual tasks, mitigating the risk of human error, and delivering more timely, actionable insights for enhanced decision-making.

**Standard BEE:**  
Provides foundational insights and a refined blueprint for manual evaluations.



### **4** The E-BEE

**Electronic-Board Effectiveness Evaluation (E-BEE)**  
An internal, customisable BEE which can be administered by the Company Secretarial team (in-house) to conduct internal BEEs, which will be based on Deloitte’s BEE methodology, enriched with data analytics and automated reporting capabilities for you.

We deliver the full spectrum from foundational insights to real-time data and automated analytics, delivering a seamless, high-impact solution.

### Technology capabilities of E-BEE



#### Cybersecurity

Trustworthy, resilient, and secure framework for proactive management of sensitive data



#### Data science and analytics

Automated data analysis and aggregation to streamline data management in real-time



#### UI/UX design

User-friendly and intuitive interface to enhance user experience



#### Dashboard functionalities

Real-time performance tracking up to date metrics on board performance



#### Automated reporting

Customised thematic reporting based on responses gathered from Directors



#### Benchmarking

Comparator benchmarking with trend analysis and insights

### The 3-year board effectiveness timeline



The Electronic Board Effectiveness Evaluation (E-BEE) offers an automated solution, future-proofing your in-house BEEs with long-term efficiency.

Y1

A Deloitte-led BEE, delivering final findings to the Nomination Committee and Board.

Y2

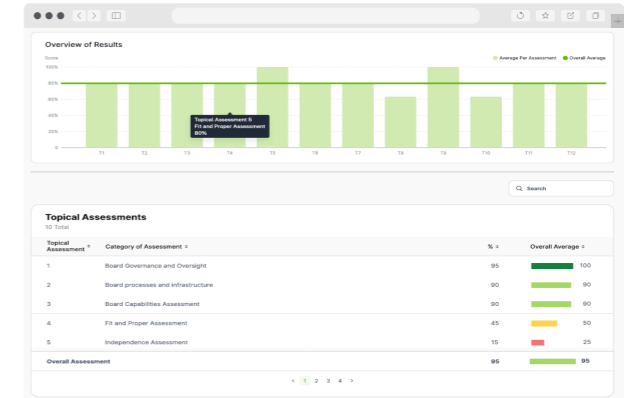
Granting you access to our E-BEE and empowering you with custom internal evaluations with actionable analytics to enhance Board performance long-term.

Y3

### Visualising the E-BEE

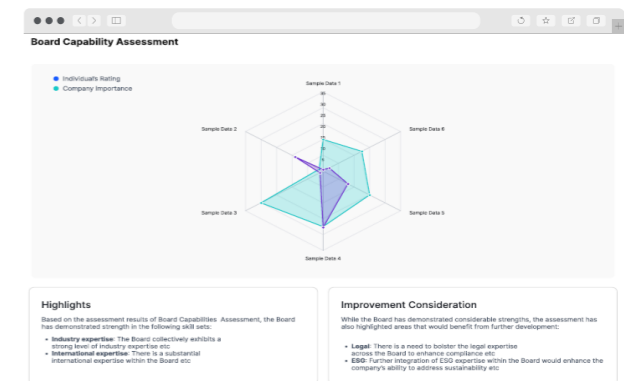
#### Benchmarking overview

Showcasing Performance of Directors Across all Topical Assessments of the BEE



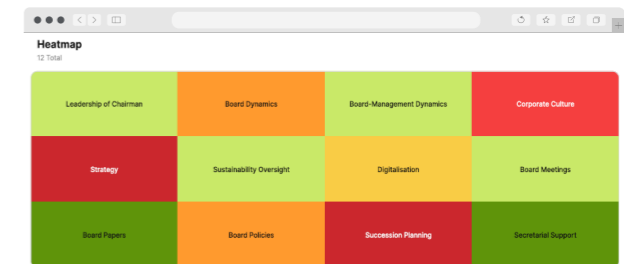
#### Board Capability Assessment

Outlining qualitative areas of strength and improvement considerations based on the Assessment



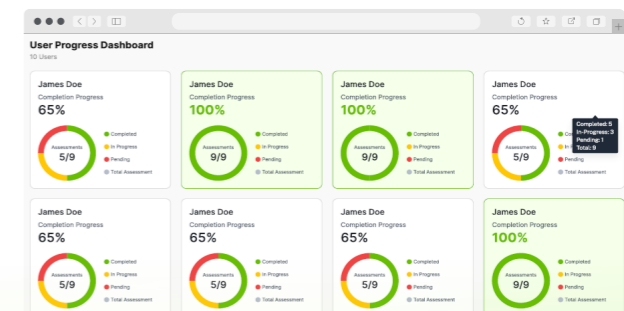
#### Heatmap of Assessments

General Trends across Assessment topics for the Board of Directors



#### User Progress Dashboard

Progress Overview of Directors, with a built-in Reminder to remind Directors to complete their assessments



## Contact Us



**Kasturi Nathan**  
**Enterprise Risk Leader,**  
**Strategy, Risk & Transactions**  
Deloitte Southeast  
Asiakasturinathan@deloitte.com



**Krishman Vargès**  
**Enterprise Risk Director,**  
**Strategy, Risk & Transactions**  
Deloitte Southeast Asia  
kpvjohn@deloitte.com



**Azman Al Aydeross**  
**Enterprise Risk Manager,**  
**Strategy, Risk & Transactions**  
Deloitte Southeast Asia  
salaydeross@deloitte.com





Deloitte refers to one or more of Deloitte Touche Tohmatsu Limited (“DTTL”), its global network of member firms, and their related entities (collectively, the “Deloitte organization”). DTTL (also referred to as “Deloitte Global”) and each of its member firms and related entities are legally separate and independent entities, which cannot obligate or bind each other in respect of third parties. DTTL and each DTTL member firm and related entity is liable only for its own acts and omissions, and not those of each other. DTTL does not provide services to clients. Please see [www.deloitte.com/about](http://www.deloitte.com/about) to learn more.

Deloitte Asia Pacific Limited is a company limited by guarantee and a member firm of DTTL. Members of Deloitte Asia Pacific Limited and their related entities, each of which is a separate and independent legal entity, provide services from more than 100 cities across the region, including Auckland, Bangkok, Beijing, Bengaluru, Hanoi, Hong Kong, Jakarta, Kuala Lumpur, Manila, Melbourne, Mumbai, New Delhi, Osaka, Seoul, Shanghai, Singapore, Sydney, Taipei and Tokyo.

This communication contains general information only, and none of DTTL, its global network of member firms or their related entities is, by means of this communication, rendering professional advice or services. Before making any decision or taking any action that may affect your finances or your business, you should consult a qualified professional adviser.

No representations, warranties or undertakings (express or implied) are given as to the accuracy or completeness of the information in this communication, and none of DTTL, its member firms, related entities, employees or agents shall be liable or responsible for any loss or damage whatsoever arising directly or indirectly in connection with any person relying on this communication.