

**Deloitte.**  
Private



Family Enterprise  
Consulting  
Helping family businesses  
sustain resilience across  
generations



**MAKING AN  
IMPACT THAT  
MATTERS**  
*since 1845*

# What is Family Enterprise Consulting?

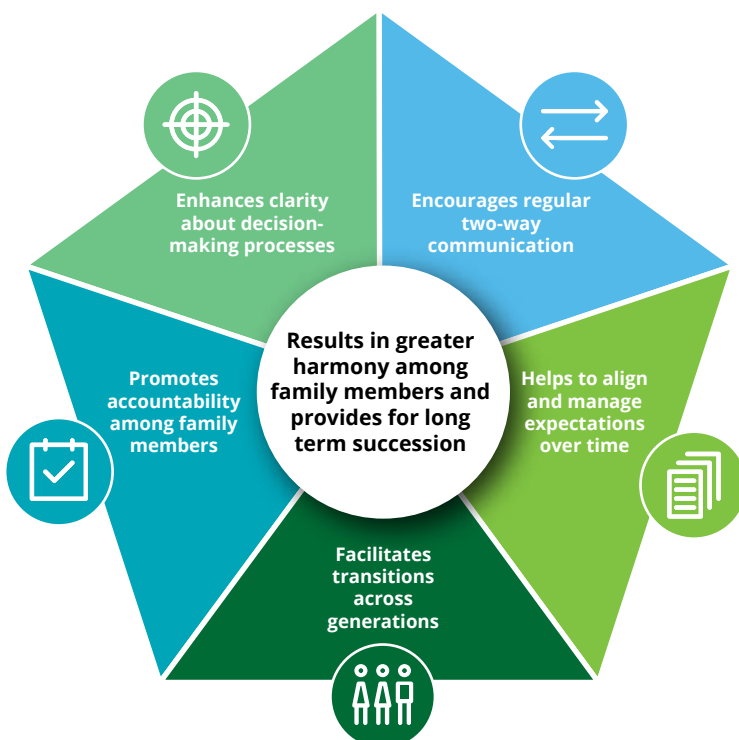
Family Enterprise Consulting is a highly customised service offered by Deloitte Private to business and wealth-owning families that integrates well designed family governance rules and structures into the unique culture, dynamics and objectives of the family enterprise.

Family governance becomes extremely important as both the family and the business grow more complex. Governance helps families organise themselves, clarify decision-making processes to manage expectations, nurture the relationships among family members and guide the relationship between the family and the business.

## How can family governance benefit the family and the business?

Family dynamics often pose a risk to a family's cohesiveness as well as to its wealth. Governance aims to reduce the impact of family disagreements and opaque decision-making which can be extremely detrimental to family harmony, growth of the family business and long-term financial security for future family members.

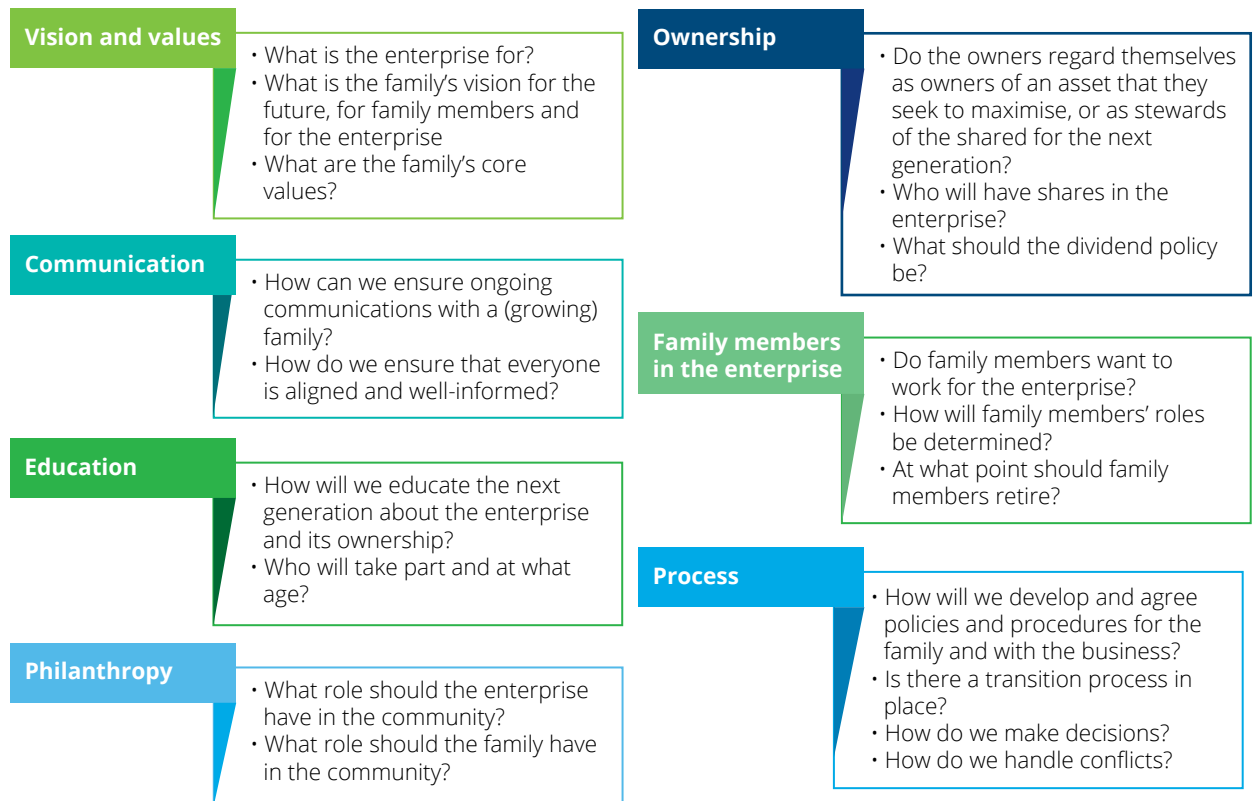
The benefits of effective family governance include:



For family governance to be effective and beneficial, it must be highly customised to reflect the particular culture, dynamics and objectives of the family.

### When does a family need Family Enterprise Consulting?

Family Enterprise Consulting is needed if all members of your family are not able to articulate similar answers to the following questions, since achieving alignment of these issues is fundamental to the long term sustainability of a family business.

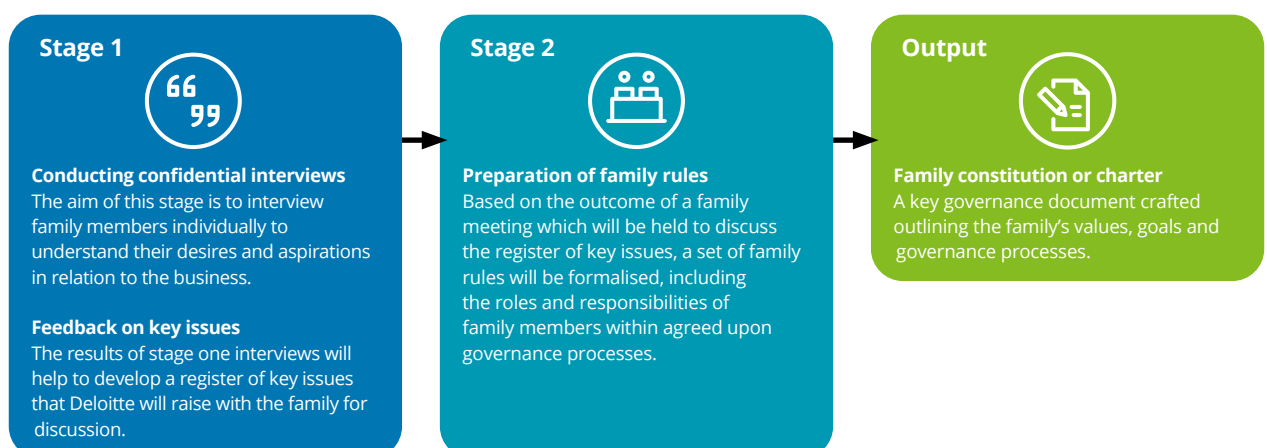


### How can Deloitte Private help

Our well-experienced Family Enterprise Consulting specialists will start the process of building governance by understanding the family and its current situation through confidential interviews. This will enable us to better identify the family's values, aspirations, opportunities and risks with the aim of developing an effective family constitution.

The family constitution, or set of family rules, is essentially a statement of general principles, outlining the vision of the business, its core values and the family's commitment to them.

As independent advisors, we can help the family to anticipate and address issues ahead of time and secure buy-in across the generations to mitigate family disagreements.



## Deloitte Private Family Enterprise Consulting team

Our Deloitte Private Family Enterprise Consulting team in Singapore works together with families that own and run businesses to help solve complex family business issues and support the growing needs of the business and the family.

Backed by our global Deloitte Private network, we are ready to serve families wherever their businesses take them.

Contact us to find out more about our Family Enterprise Consulting services.



**Richard Loi**  
**Singapore Leader**  
**Deloitte Private Singapore**  
rloi@deloitte.com  
+65 6530 5591



**Carrie Ng**  
**Manager**  
**Family Enterprise Consulting**  
**Deloitte Private Singapore**  
carng@deloitte.com  
+65 6800 2729

# Deloitte. Private

Deloitte refers to one or more of Deloitte Touche Tohmatsu Limited ("DTTL"), its global network of member firms, and their related entities. DTTL (also referred to as "Deloitte Global") and each of its member firms and their affiliated entities are legally separate and independent entities. DTTL does not provide services to clients. Please see [www.deloitte.com/about](http://www.deloitte.com/about) to learn more.

Deloitte is a leading global provider of audit and assurance, consulting, financial advisory, risk advisory, tax & legal and related services. Our global network of member firms and related entities in more than 150 countries and territories (collectively, the "Deloitte organisation") serves four out of five Fortune Global 500® companies. Learn how Deloitte's approximately 312,000 people make an impact that matters at [www.deloitte.com](http://www.deloitte.com).

Deloitte Asia Pacific Limited is a company limited by guarantee and a member firm of DTTL. Members of Deloitte Asia Pacific Limited and their related entities, each of which are separate and independent legal entities, provide services from more than 100 cities across the region, including Auckland, Bangkok, Beijing, Hanoi, Ho Chi Minh City, Hong Kong, Jakarta, Kuala Lumpur, Manila, Melbourne, Osaka, Shanghai, Singapore, Sydney, Taipei, Tokyo and Yangon.

### About Deloitte Singapore

In Singapore, services are provided by Deloitte & Touche LLP and its subsidiaries and affiliates.

Deloitte & Touche LLP (Unique entity number: T08LL0721A) is an accounting limited liability partnership registered in Singapore under the Limited Liability Partnerships Act (Chapter 163A).

This communication contains general information only, and none of Deloitte Touche Tohmatsu Limited ("DTTL"), its global network of member firms or their related entities (collectively, the "Deloitte organisation") is, by means of this communication, rendering professional advice or services. Before making any decision or taking any action that may affect your finances or your business, you should consult a qualified professional adviser.

No representations, warranties or undertakings (express or implied) are given as to the accuracy or completeness of the information in this communication, and none of DTTL, its member firms, related entities, employees or agents shall be liable or responsible for any loss or damage whatsoever arising directly or indirectly in connection with any person relying on this communication. DTTL and each of its member firms, and their related entities, are legally separate and independent entities.