

Immigration news alerts

COVID-19

The COVID-19 pandemic is a rapidly evolving situation, and authorities across the globe frequently update their travel advisories and immigration policies in response to the outbreak situation on the ground. In this series of news alerts, we will provide you with the latest news to keep you up to date on the developments in our region.



For the latest country-specific travel restrictions and immigration information in relation to COVID-19, visit gowork.ges.deloitte to view Deloitte's digital travel map (beta release).

Note: If you have trouble accessing any of the links below, please try to copy and paste them directly into your browser.

Singapore

Malaysia cargo drivers to receive certificate after COVID-19 vaccination in Singapore, exempted from daily on-arrival tests

Channel NewsAsia | 18 March 2021

Malaysian cargo drivers who have received both doses of the COVID-19 vaccine in Singapore will receive an immunisation certificate and be exempted from daily on-arrival tests 14 days after the second dose. However, they may continue to be subjected to testing at Singapore's land checkpoints from time to time. Cargo drivers who are not vaccinated will still be allowed to enter Singapore, but they will be subjected to prevailing border health measures, such as COVID-19 tests on arrival.



More information

South Korea

Seoul orders all foreign workers to take COVID-19 tests

The Korea Times | 17 March 2021

Seoul City has issued an administrative order for all foreign workers and their employers to undergo mandatory COVID-19 testing by 31 March 2021. Testing and treatment are free of charge, and employers may face fines if they or their workers do not abide by the order.

Meanwhile, the Gyeonggi provincial government has issued another order for employers to have all foreigners they plan to hire undergo polymerase chain reaction (PCR) testing before hiring and employ only those who test negative. The order will be applied from 22 March 2021 to 30 April 2021.



More information

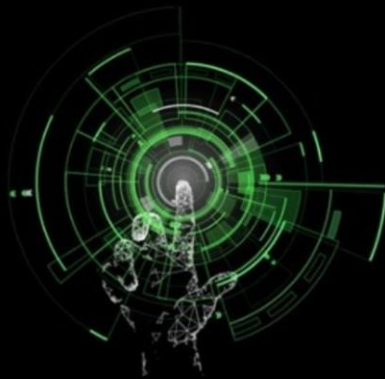
Contact

Should you have any comments or questions arising from this newsletter, please feel free to contact me.



Christina Karl
Immigration Leader
Deloitte Asia Pacific

+65 6800 3997
ckarl@deloitte.com



Singapore Budget 2021 hot topics *Powering up for the Reset Economy*

The COVID-19 pandemic is rapidly reshaping the environment for businesses. Explore how Deloitte Singapore can help you and your business.



Dbriefs
A series of live, on-



Power of With
Focus on the power



Tax@hand
Latest global and

demand and interactive webcasts focusing on topical tax issues for business executives.

humans have with machines.

regional tax news, information, and resources.

Get in touch



Deloitte Singapore | Add Deloitte as safe sender

Deloitte refers to one or more of Deloitte Touche Tohmatsu Limited (“DTTL”), its global network of member firms, and their related entities (collectively, the “Deloitte organization”). DTTL (also referred to as “Deloitte Global”) and each of its member firms and related entities are legally separate and independent entities, which cannot obligate or bind each other in respect of third parties. DTTL and each DTTL member firm and related entity is liable only for its own acts and omissions, and not those of each other. DTTL does not provide services to clients. Please see www.deloitte.com/about to learn more.

Deloitte Asia Pacific Limited is a company limited by guarantee and a member firm of DTTL. Members of Deloitte Asia Pacific Limited and their related entities, each of which are separate and independent legal entities, provide services from more than 100 cities across the region, including Auckland, Bangkok, Beijing, Hanoi, Hong Kong, Jakarta, Kuala Lumpur, Manila, Melbourne, Osaka, Seoul, Shanghai, Singapore, Sydney, Taipei and Tokyo.

About Deloitte Singapore

In Singapore, services are provided by Deloitte & Touche LLP and its subsidiaries and affiliates.

Deloitte & Touche LLP (Unique entity number: T08LL0721A) is an accounting limited liability partnership registered in Singapore under the Limited Liability Partnerships Act (Chapter 163A).

This communication contains general information only, and none of Deloitte Touche Tohmatsu Limited (“DTTL”), its global network of member firms or their related entities (collectively, the “Deloitte organization”) is, by means of this communication, rendering professional advice or services. Before making any decision or taking any action that may affect your finances or your business, you should consult a qualified professional adviser.

No representations, warranties or undertakings (express or implied) are given as to the accuracy or completeness of the information in this communication, and none of DTTL, its member firms, related entities, employees or agents shall be liable or responsible for any loss or damage whatsoever arising directly or indirectly in connection with any person relying on this communication. DTTL and each of its member firms, and their related entities, are legally separate and independent entities.

© 2021 Deloitte & Touche LLP