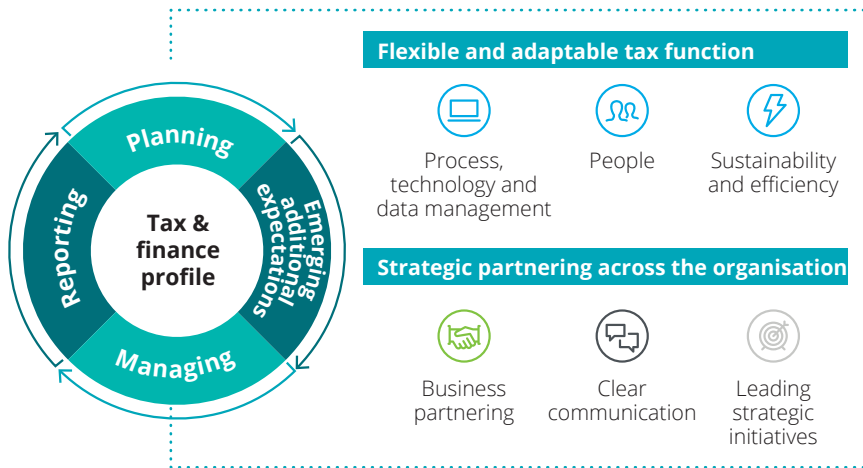


## Tax Management Consulting Transformation starts here

Deloitte's Tax Management Consulting (TMC) practice helps organisations transform their tax functions to be efficient, transparent and closely aligned to their business strategy. We help optimise the architecture of the tax function to enhance the value tax brings to the organisation.



### Expectations of tax



Derived from over 700 Deloitte stakeholder interviews, including CFOs, in preparation for Deloitte Tax Executive Transition Labs™.

### Value drivers of automating your tax function



### Deloitte tax transformation methodology

#### Assess

##### Assess your tax process and automation needs

TaxLab to map your tax process and understand the challenges and roadblocks. A deep dive to review operational pain points, identify root cause and then prioritise based on how critical it is to automate based on your operational and business needs.

#### Identify

##### Identification of solutions

Based on priorities identified above, map solutions to address each of the operational pain points. Our proposed solutions would take into consideration your particular requirements in relation to technology, infrastructure and budget spend.

#### Implement

##### Implementation of solutions

Support you across the entire journey of automation from developing your business plan, selecting the right technology architecture and designing your tax technology blueprint.

#### Monitor

##### Monitoring

Following development and implementation of the agreed upon processes, procedures and tools, roll out and transition through communication and training. This includes ongoing monitoring activities.

# Service offerings

## Tax technology & process

### Process review and automation

- **Tax process review** – Assessment and development of current tax planning, accounting and compliance processes to identify a more efficient and value-driven set of processes.
- **Robotic process automation (RPA)** - Design and implementation of software code to automate manual, rule-based, repetitive tasks that humans perform within the tax function, to improve processing efficiencies and reduce human error and operating costs within tax departments and across the entire organisation.
- **Tax-enabled enterprise systems**
  - *Enterprise resource planning* - Integration and alignment of enterprise and tax systems/processes to simplify and streamline data collection and management processes.
  - *Enterprise tax integration* - Automation of transactional determination of indirect taxes (SST, GST/VAT etc.) through enhancement of ERP systems and/or indirect tax software configuration.
  - *Direct tax automation* - Assessment, vendor selection, design and implementation of tax software for automation of corporate income tax estimations, compliance and provision processes.



### Tax data management and analytics

- Design and implementation of tools for timely collection, consolidation, transformation and validation of tax data in an automated and streamlined fashion.
- Design of centralised tax data management infrastructure.
- Development of visualisations to analyse data for tax benchmarking and analytics.

### Tax portal (myInsight)

- Global visibility of tax and legal obligations, organisation and management of tax processes and resolution of complex data issues using portal and database technology.

[www.deloitte.com/my](http://www.deloitte.com/my)

## Contacts

### Senthuran Elalingam

**Tax Management Consulting  
Leader**

+603 7610 8879

[selalingam@deloitte.com](mailto:selalingam@deloitte.com)

### Cheong Mun Loong

**Tax Management Consulting  
Director**

+603 7610 7652

[mucheong@deloitte.com](mailto:mucheong@deloitte.com)

---

Deloitte refers to one or more of Deloitte Touche Tohmatsu Limited (“DTTL”), its global network of member firms, and their related entities (collectively, the “Deloitte organization”). DTTL (also referred to as “Deloitte Global”) and each of its member firms and related entities are legally separate and independent entities, which cannot obligate or bind each other in respect of third parties. DTTL and each DTTL member firm and related entity is liable only for its own acts and omissions, and not those of each other. DTTL does not provide services to clients. Please see [www.deloitte.com/about](http://www.deloitte.com/about) to learn more.