

# Connected Financial Planning + Business Spend Management

Supplier globalization and supply chain impacting events are placing increased pressures on Finance and Procurement to collaborate on Financial Planning and Supplier Spend. Companies must take full view of Plan versus Actuals, both past-present and future to sustain operations and ensure company profitability.

Leveraging Anaplan's Connected Planning environment, in conjunction with Coupa Business Spend Management platform, enables Finance and Procurement teams to centrally manage plans, procurements and payments to drive efficiencies and savings insights.

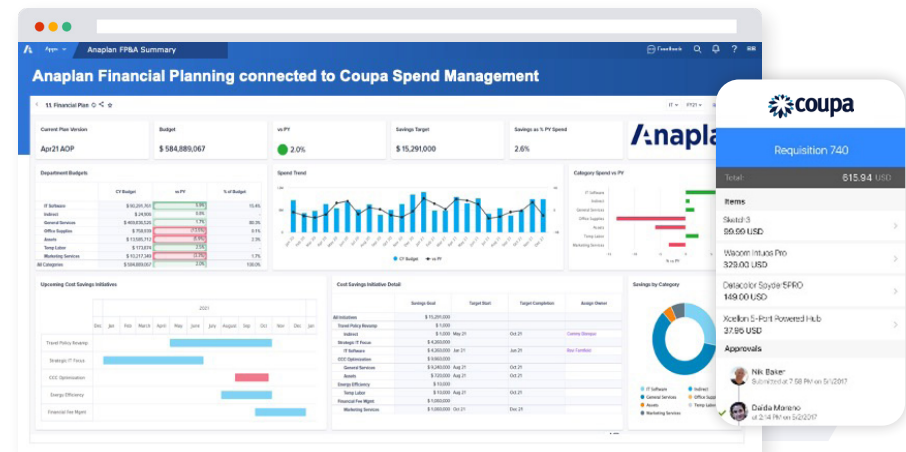
## There's a better way to plan

Leverage the combined power of Coupa and Anaplan to align global stakeholders by providing a centralized view of goods and services financial decisions across these best-in-class cloud Platform. With Anaplan and Coupa companies can better plan and track spend by department, supplier and category, with a focus on optimizing decisions for savings.

**It's Dynamic** – Plan and allocate resources rapidly as situations evolve

**It's Collaborative** – Involve all the right people in decisions – even your customers

**It's Intelligent** – Leverage internal and external data to unlock predictive insights



## Key benefits

- Share budget data from Anaplan with Coupa, and transmit Order and Invoice values from Coupa to Anaplan, regardless of Supplier or Geography
- Categorize Supplier spend into logical groupings that allow Stakeholders in Finance and Procurement to understand how Opex and Capex is being spent
- Track Budgets, Purchase Orders and Invoice Accruals by Department and Project to help pinpoint waste or areas for cost savings
- View Category and Supplier Segmentation to prioritize supplier performance management practices with a focus on the largest or most strategic relationships

## Key features

### Cloud based planning and spend management

- Track spend across Department, Geographies, Categories and suppliers
- Align spend forecasts to Financial Plans
- Conduct real-time, scenario-based business and resource reviews
- Pinpoint opportunities for savings through volume pooling, supplier consolidation or other goals

### Supplier segmentation

Procurement can group suppliers into logical categories based on spend, complexity, location and other factors to better prioritize which suppliers receive strategic attention.

### Spend benchmarking

Management can review spend for their department and compare this to other company wide benchmarks to see if their Travel or IT costs exceed the company average.

### Cloud based planning and identification

- Review and locate excessive spend by Department or Suppliers
- Identify discrepancies in Spend to contracted values (purchase price variance)
- Measure the impact of potential changes before rolling out



### Spend forecasts

Executive leadership can now predict supplier spend across departments to help track plan vs. actual to Opex and Capex plans to proactively identify areas of concern.

### Aggregating data sources

- Spend data can be imported for any number of execution systems, from Procurement, Travel, IT, Real Estate and others to help align current and future financial planning.
- With the tops-down and bottoms-up view of spend, departments and business units can collaborate with other stakeholders to better identify savings opportunities across the company.

## Capabilities from Anaplan + Coupa

### Planning at scale

Enterprise-grade scale with a cloud native platform and patented in-memory Hyperblock™ engine.

### Voice to your data

One location for all your planning data that is trusted, connected, and current.

### Powerful decision making

Unmatched flexibility to model any scenario for the organization and by the organization.

### Ease of use

Engaging, collaborative, and actionable user experience.

### Safeguarding your present and future

Robust protection through user access controls, identity management, and data encryption

### Superior visibility

Embedded intelligence and optimization to drive insights that matter.

## About Anaplan

Anaplan (NYSE: PLAN) is a transformative way to see, plan, and run your business. Using our proprietary Hyperblock™ technology, Anaplan lets you contextualize real-time performance, and forecast future outcomes for faster, confident decisions. Because connecting strategy and plans to collaborative execution across your organization is required to move business FORWARD today. Based in San Francisco, we have 20 offices globally, 175 partners and more than 1,900 customers worldwide.

To learn more, visit [Anaplan.com](https://www.anaplan.com)