



## Legal Alert

24 April 2024

*Experience the future of law, today*

### **New minimum wage rates for hotel business effective from 13 April 2024 onward**

On 27 March 2024, the Wage Committee issued a Notification of the Wage Committee Re: Minimum Wage Rate for Hotel Business (“Notification”). The new wage rate was effective as from 13 April 2024 onwards.

The new minimum wage rate, 400 Baht per day, applies to employees working in a 4-stars hotel or better that employs a minimum of 50 people. It affects hotels located in Bangkok plus nine other provinces:

- 1) Bangkok, in Pathumwan and Wattana District;
- 2) Krabi Province, in Ao Nang Sub-District Administrative Organization;
- 3) Chonburi Province, in Pattaya City;
- 4) Chiang Mai Province, in Chiang Mai Municipality Office;
- 5) Prachuap Khiri Khan Province, in Hua Hin Municipality Office;
- 6) Phangnga Province, in Kuk khak Municipality Office;
- 7) Phuket Province;
- 8) Rayong Province, in Pae Sub-District;

- 9) Songkha Province, in Had Yai Municipality Office; and
- 10) Surat Thani Province, in Koh Samui Municipality Office

In addition, this Notification provides the definition of a “day”, which is the normal working hours of an employee but must not exceed 8 hours for all types of work; or up to 7 hours for the work that is considered hazardous to the health and safety of employees according to the Ministerial Regulation No. 2 (B.E. 2541). Nonetheless, the employees may be assigned to work less than the stipulated hours as mentioned above.

### Contacts

For more information and how Deloitte can help you, please contact:

#### Anthony Visate Loh

Partner - Tax & Legal

Tel: +66 (0) 2034 0000 Ext. 40112

Email: [aloh@deloitte.com](mailto:aloh@deloitte.com)

#### Sutthika Ruchupan

Counsel - Tax & Legal

Tel: + 66 (0) 2034 0000 Ext. 11473

Email: [sruchupan@deloitte.com](mailto:sruchupan@deloitte.com)

#### Paradee Jitprapat

Managing Associate - Tax & Legal

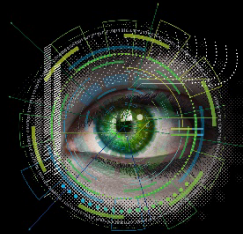
Tel: + 66 (0) 2034 0000 Ext. 11243

Email: [pjitprapat@deloitte.com](mailto:pjitprapat@deloitte.com)



#### Dbriefs

A series of live, on-demand and interactive webcasts focusing on topical tax issues for business executives.



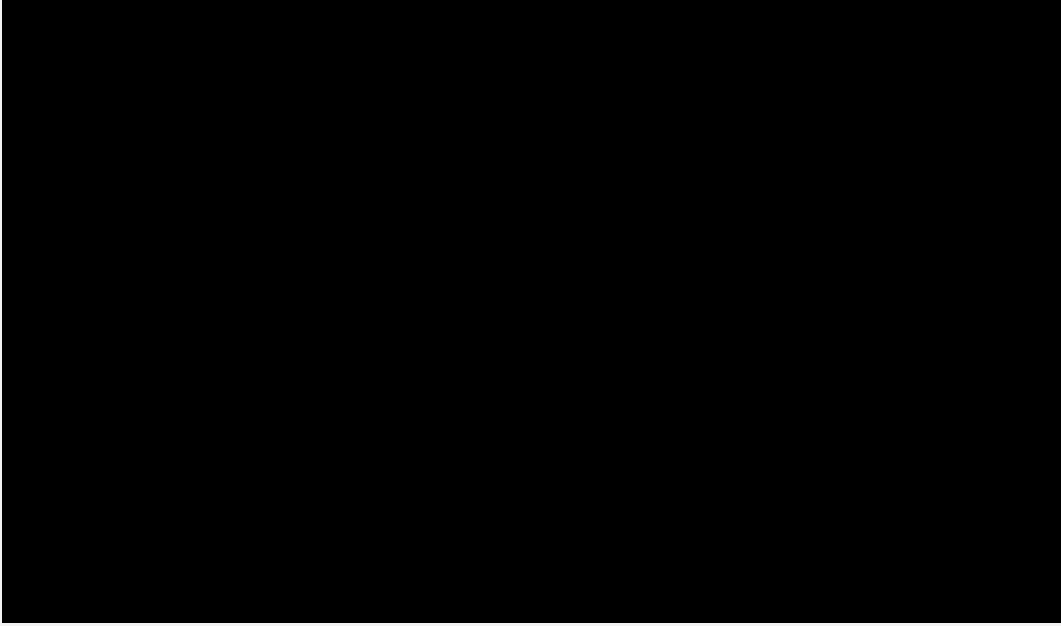
#### Power of With

Focus on the power humans have with machines.



#### Tax@hand

Latest global and regional tax news, information, and resources.



Get in touch



**Deloitte Thailand | Add as safe sender**

Deloitte refers to one or more of Deloitte Touche Tohmatsu Limited (“DTTL”), its global network of member firms, and their related entities (collectively, the “Deloitte organization”). DTTL (also referred to as “Deloitte Global”) and each of its member firms and related entities are legally separate and independent entities, which cannot obligate or bind each other in respect of third parties. DTTL and each DTTL member firm and related entity is liable only for its own acts and omissions, and not those of each other. DTTL does not provide services to clients. Please see [www.deloitte.com/about](http://www.deloitte.com/about) to learn more.

Deloitte Asia Pacific Limited is a company limited by guarantee and a member firm of DTTL. Members of Deloitte Asia Pacific Limited and their related entities, each of which are separate and independent legal entities, provide services from more than 100 cities across the region, including Auckland, Bangkok, Beijing, Hanoi, Hong Kong, Jakarta, Kuala Lumpur, Manila, Melbourne, Osaka, Seoul, Shanghai, Singapore, Sydney, Taipei and Tokyo.

**About Deloitte Thailand**

In Thailand, services are provided by Deloitte Touche Tohmatsu Jaiyos Co., Ltd. and its subsidiaries and affiliates.

This communication contains general information only, and none of Deloitte Touche Tohmatsu Limited (“DTTL”), its global network of member firms or their related entities (collectively, the “Deloitte organisation”) is, by means of this communication, rendering professional advice or services. Before making any decision or taking any action that may affect your finances or your business, you should consult a qualified professional adviser.

No representations, warranties or undertakings (express or implied) are given as to the accuracy or completeness of the information in this communication, and none of DTTL, its member firms, related entities, employees or agents shall be liable or responsible for any loss or damage whatsoever arising directly or indirectly in connection with any person relying on this communication. DTTL and each of its member firms, and their related entities, are legally separate and independent entities.

© 2024 Deloitte Touche Tohmatsu Jaiyos Advisory Co., Ltd.