



## Thailand Immigration Alert

### Important Tips for Foreigners Using the Auto Gate at Suvarnabhumi Airport: Avoid Visa and Work Permit Complications

#### Important Tips for Foreigners Using the Auto Gate at Suvarnabhumi Airport

When traveling through Suvarnabhumi Airport in Thailand, the Auto Gate system offers convenience for certain travelers. However, it is important to understand how it works to avoid potential issues:

- 1. Departure:** all non-Thai nationals are allowed to use the Auto Gate to exit Thailand.
- 2. Arrival:**
  - The Auto Gate is available for Singapore nationals and Hong Kong-Chinese nationals upon entry into Thailand.
  - Foreigners holding a Re-entry Permit and a Thai visa on their passport should note:
    - The Auto Gate will display a prompt asking if you wish to use your visa and re-entry permit for entry into Thailand.

- If you select **'Yes'**, you will be directed to the Immigration counter, where an officer will stamp your passport with the appropriate entry stamp.
- If you select **'No'**, the Immigration system will not issue an entry stamp on your passport, which will invalidate your current visa.

**3. Don Mueang Airport:** Please note that Don Mueang Airport does not have an Auto Gate system. All travelers must proceed to the Immigration counters for both departure and arrival.

### Important Reminder:

The Auto Gate system at Suvarnabhumi Airport can significantly impact foreigners holding any type of Thai visa, as well as their family members.

**For example**, if a foreigner holds a **Thai work permit, a long-term B visa, and a Re-entry Permit**, using the Auto Gate incorrectly may lead to the following consequences:

**1. Visa and Re-entry Permit:**

- The current visa and Re-entry Permit will become void automatically.
- The individual must leave Thailand and apply for a new visa, such as:
  - **Non-Immigrant 'B' Visa** or **Non-Immigrant 'IB' Visa** for employment purposes.
- The new visa must be obtained at a Royal Thai Embassy or Consulate overseas.

**2. Work Permit:**

- The work permit may be cancelled (subject to case-by-case consideration).
- A new work permit application will be required after re-entry into Thailand with new Non-Immigrant B/IB visa.

### Our recommendation:

To avoid complications, we recommend that Singapore nationals and Hong Kong-Chinese nationals holding a Thai work permit, visa, and re-entry permit are advised not to use the Auto Gate for entering Thailand at Suvarnabhumi Airport. Instead, they should proceed directly to the Immigration counter to ensure proper entry stamping and to avoid issues with visa validity.

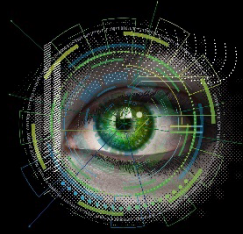
## Contacts

- Pornpun Niyomthai, Partner, Tax & Legal Services  
Tel: +66 (0) 2034 0175  
Email: [pniyomthai@deloitte.com](mailto:pniyomthai@deloitte.com)
- Junsamorn Ketthanapat, Senior Manager, Tax & Legal Services  
Tel: +66 (0) 2034 0000 ext. 11860  
Email: [jkethanapat@deloitte.com](mailto:jkethanapat@deloitte.com)



### Dbriefs

A series of live, on-demand and interactive webcasts focusing on topical tax issues for business executives.



### Power of With

Focus on the power humans have with machines.



### Tax@hand

Latest global and regional tax news, information, and resources.

Get in touch



[Deloitte Thailand](#) | [Add as safe sender](#)

Deloitte refers to one or more of Deloitte Touche Tohmatsu Limited (“DTTL”), its global network of member firms, and their related entities (collectively, the “Deloitte organization”). DTTL (also referred to as “Deloitte Global”) and each of its member firms and related entities are legally separate and independent entities, which cannot obligate or bind each other in respect of third parties. DTTL and each DTTL member firm and related entity is liable only for its own acts and omissions, and not those of each other. DTTL does not provide services to clients. Please see [www.deloitte.com/about](http://www.deloitte.com/about) to learn more.

Deloitte Asia Pacific Limited is a company limited by guarantee and a member firm of DTTL. Members of Deloitte Asia Pacific Limited and their related entities, each of which are separate and independent legal entities, provide services from more than 100 cities across the region, including Auckland, Bangkok, Beijing, Hanoi, Hong Kong, Jakarta, Kuala Lumpur, Manila, Melbourne, Osaka, Seoul, Shanghai, Singapore, Sydney, Taipei and Tokyo.

**About Deloitte Thailand**

In Thailand, services are provided by Deloitte Touche Tohmatsu Jaiyos Co., Ltd. and its subsidiaries and affiliates.

This communication contains general information only, and none of Deloitte Touche Tohmatsu Limited ("DTTL"), its global network of member firms or their related entities (collectively, the "Deloitte organisation") is, by means of this communication, rendering professional advice or services. Before making any decision or taking any action that may affect your finances or your business, you should consult a qualified professional adviser.

No representations, warranties or undertakings (express or implied) are given as to the accuracy or completeness of the information in this communication, and none of DTTL, its member firms, related entities, employees or agents shall be liable or responsible for any loss or damage whatsoever arising directly or indirectly in connection with any person relying on this communication. DTTL and each of its member firms, and their related entities, are legally separate and independent entities.

© 2024 Deloitte Touche Tohmatsu Jaiyos Advisory Co., Ltd.