

Deloitte.



Working Together Effectively

Workbook



Business Chemistry Quiz

1. Which of the following statements do you agree with most?

Tick

- A I'm a team player and diplomatic
 - B I'm outgoing, spontaneous, and adaptable
 - C I'm logical and value challenges
 - D I'm practical and focus on detail
-

2. Which collection of words do you connect with most?

Tick

- A Empathetic, non-confrontational, prioritises relationships
 - B Adaptable, outgoing, imaginative
 - C Technical, quantitative, logical
 - D Practical, reserved, loyal
-

3. Which motto is your favourite? Please select ONE of the following:

Tick

- A Work with me, people!
 - B You only live once
 - C It's not personal; it's just business
 - D It's all in the details
-

Business Chemistry Quiz

4. Which of the following expressions do you like to use the most?

Tick

- | | | |
|---|---|--|
| A | “What do you think?”, “I’m happy to help!” | |
| B | “What is...?”, “Picture this...”, “Yes, and...”, “Why not?” | |
| C | “Why?”, “How does this work?” | |
| D | “I really enjoy planning and paying attention to detail.” | |
-

5. Which of the following do you believe describes you well?

Tick

- | | | |
|---|---|--|
| A | I will weigh out all the options and check with others prior to making decisions | |
| B | I’m an imaginative thinker who believes big risks can bring great things | |
| C | I’m an analytical thinker who looks for patterns in complex systems prior to making decisions | |
| D | I’m a deliberate decision maker who focuses on the how | |
-

6. Choose your favourite word

Tick

- | | | |
|---|---------------|--|
| A | Connection | |
| B | Possibilities | |
| C | Challenge | |
| D | Stability | |
-

Business Chemistry Quiz

7. Which of the following would you say you are?

Tick

| | | |
|---|------------------------|--|
| A | The mediator | |
| B | The leader of the pack | |
| C | The challenger | |
| D | The detailed thinker | |

8. Which statement matches your decision making process?

Tick

| | |
|---|---|
| A | I make decisions slowly because it's important to check that everyone is on board |
| B | I make decisions quickly and spontaneously, based on gut feeling rather than careful consideration of data |
| C | I make decisions swiftly, discarding what is considered to be irrelevant to an answer – even if it's unpopular |
| D | I make decisions deliberately, considering various options, thinking through details and identifying consequences |

Business Chemistry Types

Total up the number of As, Bs, Cs and Ds. Which business chemistry type or types did your results match you with?



A. Integrator

Integrators are all about connection. They value meaning and enjoy exploring different interpretations or perspectives.

B. Pioneer

Pioneers love exploring new possibilities. They particularly enjoy working with others and generating new, novel ideas.

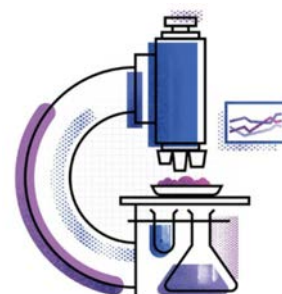


C. Driver

Drivers love a challenge. They value competence and particularly enjoy sharp minds and quick wit.

D. Guardian

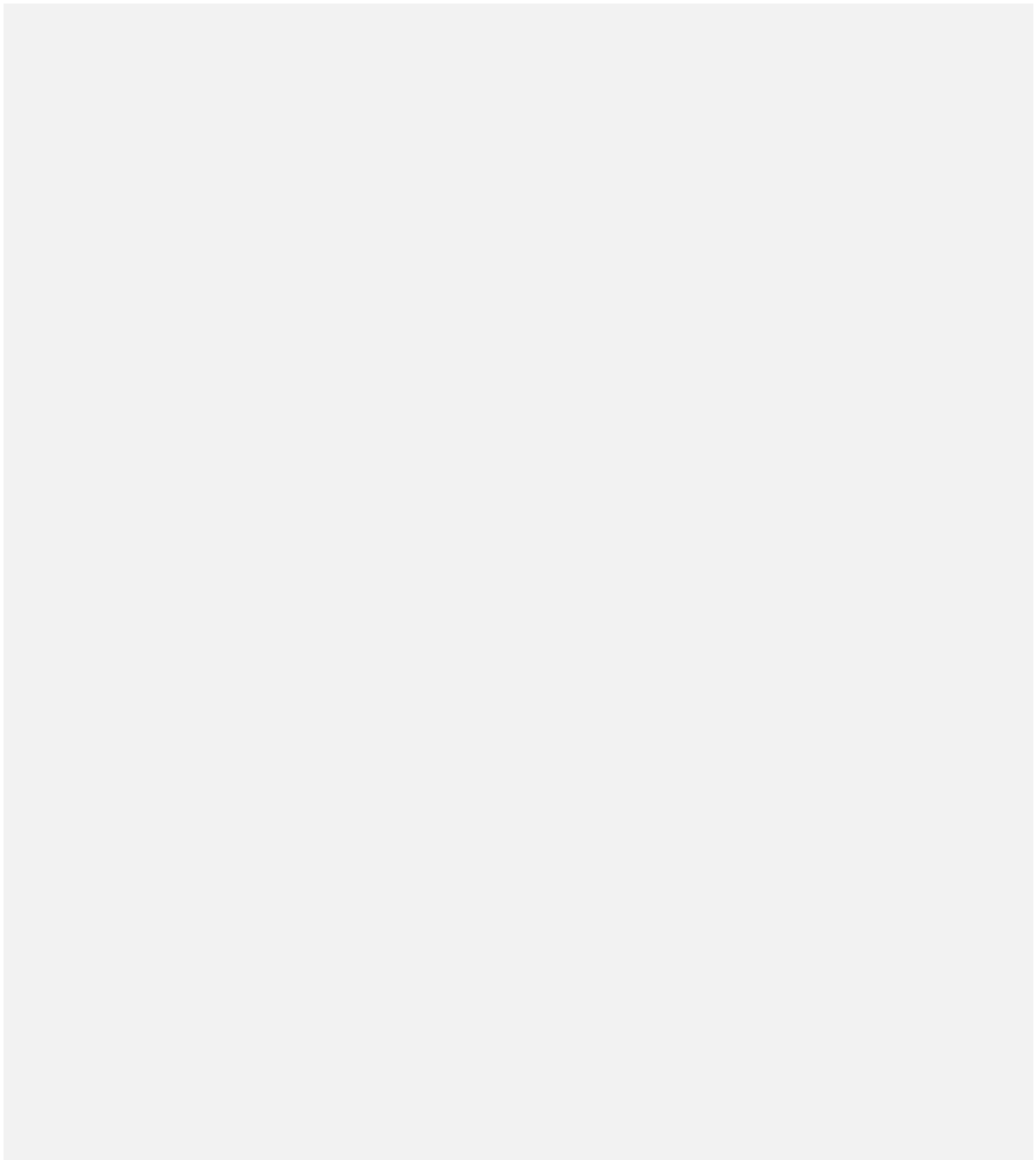
Guardians value stability and strive for accuracy and certainty. They focus on details and are known for bringing order to chaos.



How to work together effectively | Breaking the Ice

How would you help your team break the ice and get to know each other better?

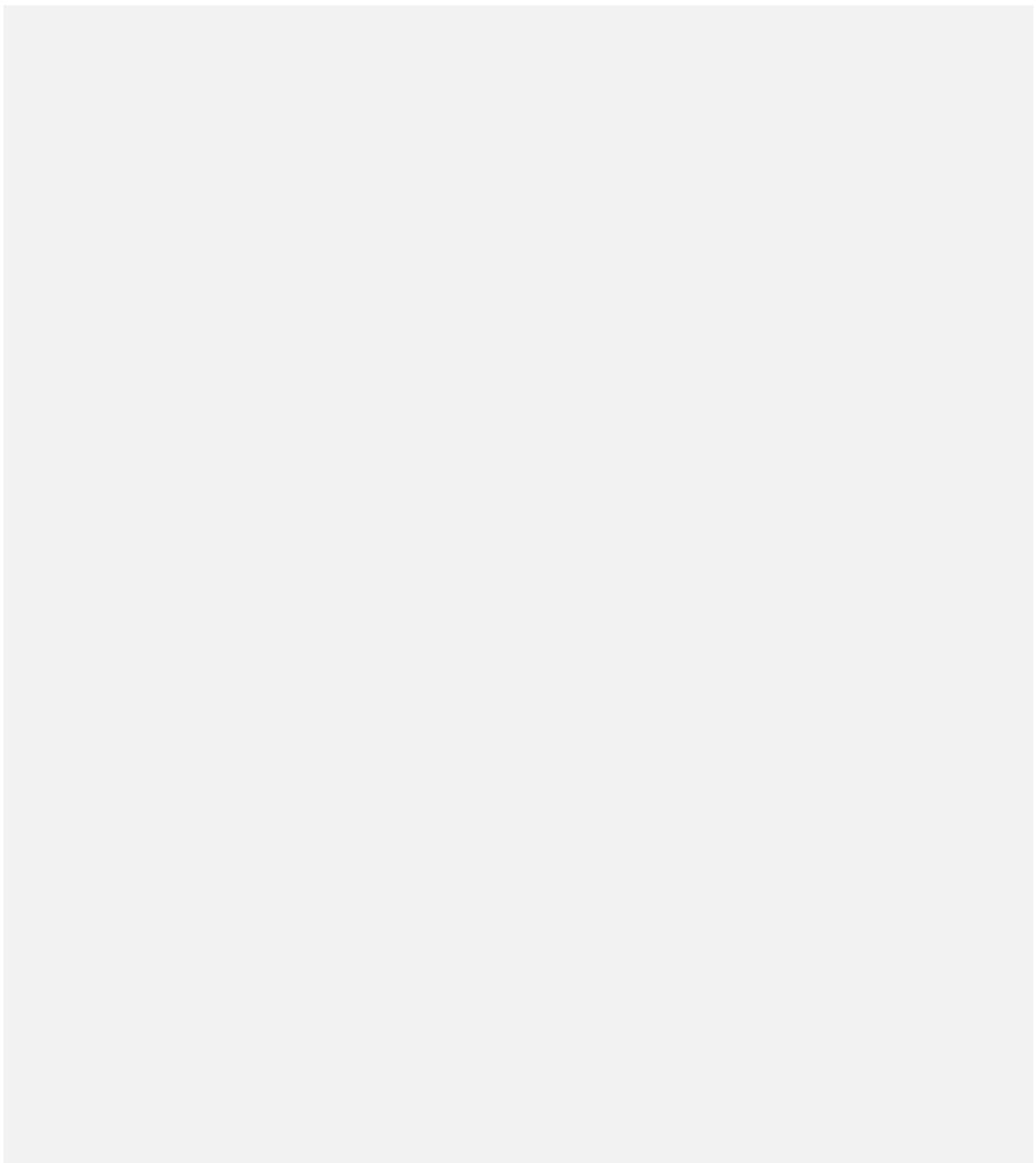
Please use the space below to write your ideas



How to work together effectively | Reflection

When you have worked as part of a team in the past, what worked well and what didn't work so well?

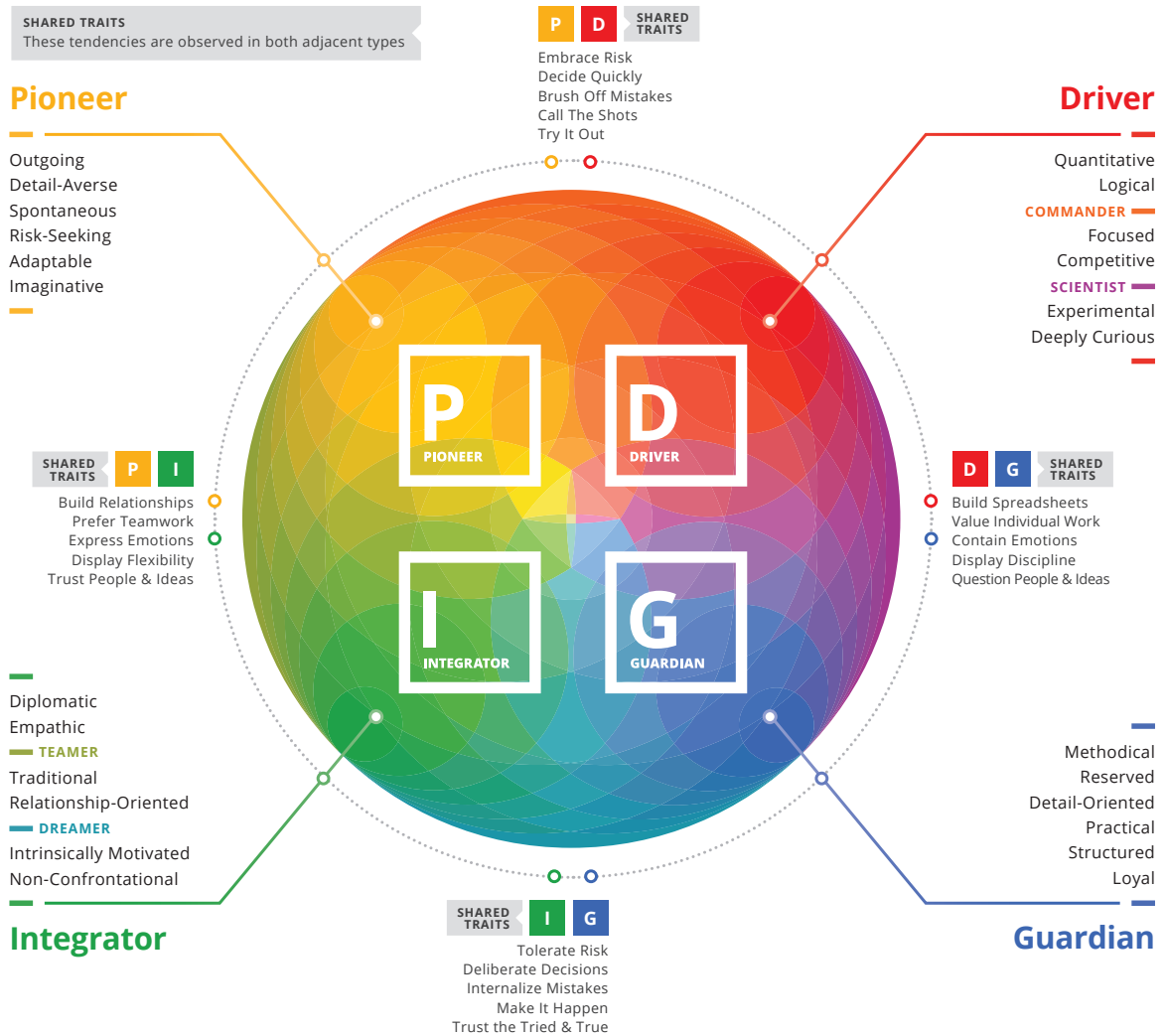
Please use the space below to write your reflections



How to work together effectively | Reflection

When you have worked as part of a team in the past, what worked well and what didn't work so well?

Please use the space below to write your reflections



Additional notes

Use these pages to write down any additional notes from the session

Further links

Main Careers Site:

https://www2.deloitte.com/uk/en/careers/careers.html?icid=top_careers

Grad Programmes:

https://www2.deloitte.com/uk/en/pages/careers/articles/graduate-opportunities.html?icid=top_graduate-opportunities

SVS Programmes:

https://www2.deloitte.com/uk/en/pages/careers/articles/summer-vacation-scheme.html?icid=top_summer-vacation-scheme

Apprentice Programmes:

https://www2.deloitte.com/uk/en/pages/careers/articles/brightstart-business-apprenticeship-scheme.html?icid=top_brightstart-business-apprenticeship-scheme

Frequently asked questions:

<https://www2.deloitte.com/uk/en/pages/careers/articles/student-graduate-faqs.html>

Dot the Bot (ask a question):

<https://meetandengage.com/deloittestudenthelpdesk>