

Deloitte UK – Corporate Finance M&A Lead Advisory

A look back on FY18

An active year across all sectors

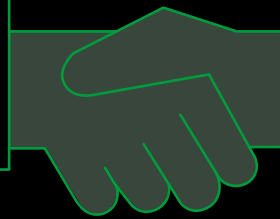
Lead advisor on
70 completed deals...

...with a combined
deal value of
£4bn



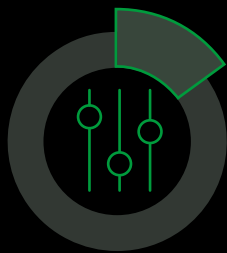
Extensive buyer reach, spanning both Strategic and Private Equity (PE) acquirers

Private Equity
acquirers
Deals **30+**
Value **£2.5bn**



Strategic
acquirers
35+ Deals
Value **£1.5bn**

Impressive Private Equity market share



~15%
of PE deals in UK

Enterprise Values ranging from
c. £20m – c. £800m

Pre-eminent sell-side advisor to the UK mid-market

50 sell-side roles...

...with a combined deal value
in excess of **£2.7bn**



International deal corridor remains strong

~1/4 of our completed deals were
cross border...

... of which, **~33%**
were sold to a US
acquirer



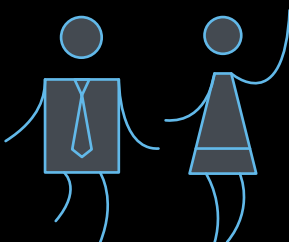
Top three sectors trending by volume and value:



- 1 Business Services
- 2 Healthcare and Life Sciences
- 3 Technology, Media and Telecommunications

Leading UK M&A advisory practice of scale

135+ strong team
of lead M&A advisers...



...including **40+**
Partners and Directors



Part of a global M&A service offering

200 Partners, 1,600
professionals across
120 locations

...430 completed deals
with a combined deal value
of **\$37.6bn** (38% of
which were cross border)



Deloitte – Corporate Finance M&A Lead Advisory

Providing financial advice and insight at every stage of a transaction – from consideration of the strategic options to transaction execution, be it an IPO, acquisition or divestment, restructuring or fast track disposal.

www2.deloitte.com/uk/en/pages/financial-advisory/topics/corporate-finance-advisory.html

Contact

Fenton Burgin

Head of UK Corporate Finance Advisory
fburgin@deloitte.co.uk

Deloitte.

This publication has been written in general terms and we recommend that you obtain professional advice before acting or refraining from action on any of the contents of this publication. Deloitte LLP accepts no liability for any loss occasioned to any person acting or refraining from action as a result of any material in this publication.

Deloitte LLP is a limited liability partnership registered in England and Wales with registered number OC303675 and its registered office at 1 New Street Square, London EC4A 3HQ, United Kingdom.

Deloitte LLP is the United Kingdom affiliate of Deloitte NWE LLP, a member firm of Deloitte Touche Tohmatsu Limited, a UK private company limited by guarantee ("DTTL"). DTTL and each of its member firms are legally separate and independent entities. DTTL and Deloitte NWE LLP do not provide services to clients. Please see www.deloitte.com/about to learn more about our global network of member firms.

© 2018 Deloitte LLP. All rights reserved.

Designed and produced by The Creative Studio at Deloitte, London. J16511