

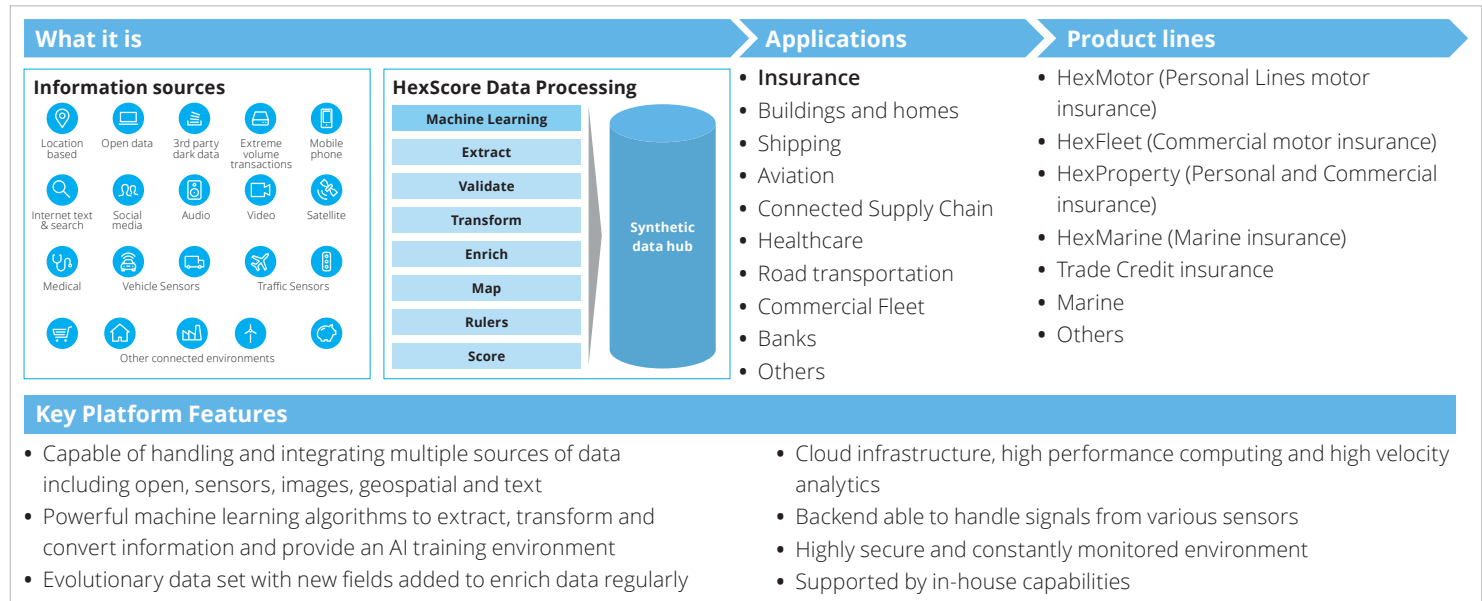


# HexScore

HexScore is a Deloitte asset and related suite of capabilities. HexScore is an accelerator that combines a number of ecosystems to provide industry-specific and ready insights.

HexScore is a team within Deloitte's Actuarial practice that develop AI-based innovative products. It's so much more than just a platform or software, it's the combination of platform, software, data and the team's capabilities that enable the successful development of products.

## How does it work?



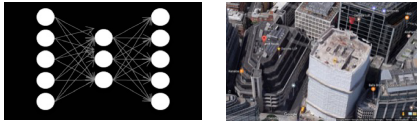
# HexProperty – Using AI for automated risk assessment of commercial/ personal property

## What are the potential benefits?

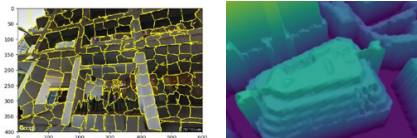
- 1 Customer provides property address

Hill House  
Little New Street

- 2 AI finds relevant information on the property including imagery



- 3 Utilises deep learning to recognise features of the property

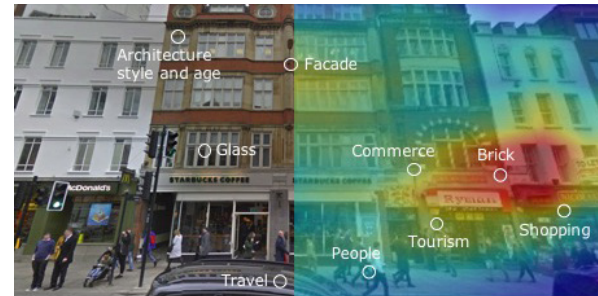


- 4 Provides data to insurer

Construction materials and textures, Floor size, Structural analysis, Building height, Floors, Overhangs, Roof type, Roof material, Proximity analysis, Other features

## What are the potential benefits?

Currently most insurers are able to send building engineers to assess only 10-15% of the properties they underwrite. For the remaining 85% of properties insurers rely on data from customers or brokers for risk assessment, underwriting and quoting. We have developed an intelligent bot capable of spatial awareness and computer vision that utilises multiple sources of information to extract relevant attributes for risk assessment of buildings/homes in the UK. This enables insurers to disrupt the customer proposition as well as the risk assessment process – Now the additional 85% of sites are covered without the need to visit the site or customers/brokers filling in lengthy forms to provide information to insurers.



## Contacts

### Gurpreet Johal

Lead Partner, Artificial Intelligence, Deloitte UK  
+44 (0)20 7303 2846  
gjohal@deloitte.co.uk

### Sulabh Soral

Director, Deloitte UK  
+44 (0)20 7007 2123  
ssoral@deloitte.co.uk

As used in this document, Deloitte refers to one or more of Deloitte Touche Tohmatsu Limited, a UK private company limited by guarantee (“DTTL”), its network of member firms, and their related entities. DTTL and each of its member firms are legally separate and independent entities. DTTL (also referred to as “Deloitte Global”) does not provide services to clients. Please see [www.deloitte.com/about](http://www.deloitte.com/about) to learn more about our global network of member firms.

© 2018. For information, contact Deloitte Touche Tohmatsu Limited.