

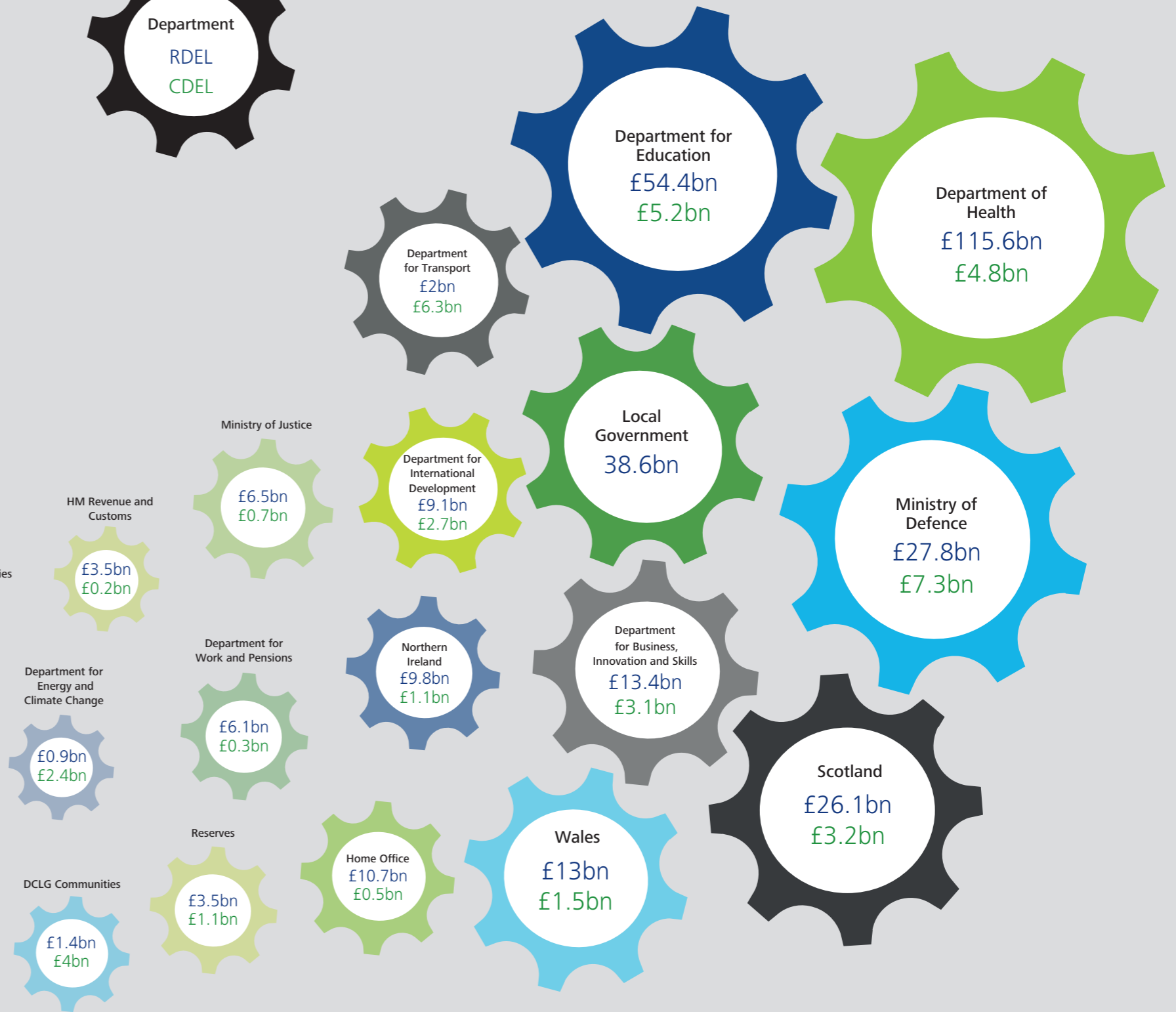
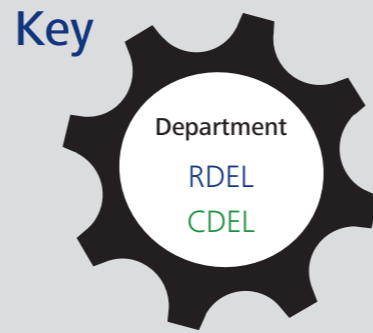
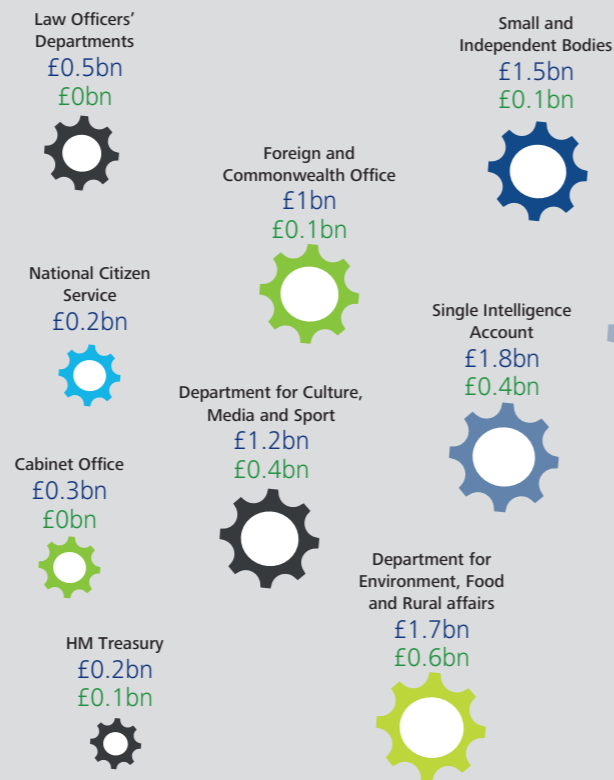


# Public spending 2016-17

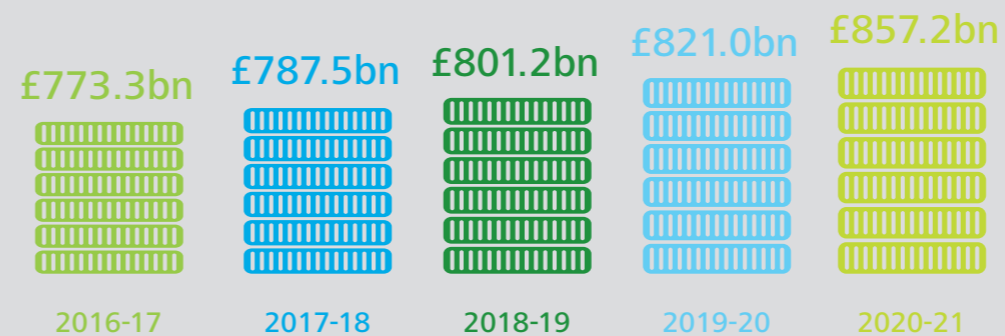
## Departmental budgets

UK Public Sector | #stateofstate

Total spending in 2016-17 will be **£773.3bn**  
 AME: £386.7bn  
 DEL: £364.8bn



### Five year spending plan



Departmental Expenditure Limits (DEL) are government budgets for programmes and administration. It is split between Resource DEL (RDEL) for day-to-day spending and Capital DEL (CDEL) for investment.

Annually Managed Expenditure (AME) is demand-led spending – such as welfare, tax credits and public sector pensions.

For a complete explanation of these budgets and their context, please refer to the Spending Review at [www.gov.uk](http://www.gov.uk).

For more analysis on UK government and the public sector, visit: [www.deloitte.co.uk/stateofthestate](http://www.deloitte.co.uk/stateofthestate).

Source: Spending Review 2015, HM Treasury



@DeloitteUKGov

© 2015 Deloitte LLP. All rights reserved.

Designed and produced by The Creative Studio at Deloitte, London. J2904