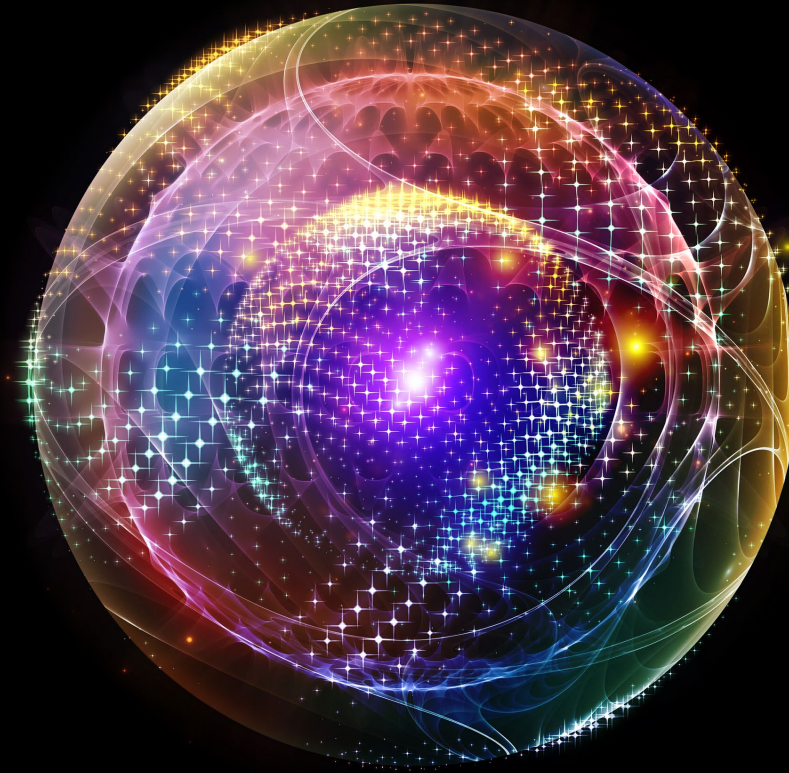


Deloitte.



Creating connectivity during the financial close with Deloitte, BlackLine, and SAP®

Tom Toppen, managing director, Deloitte & Touche LLP – BlackLine Lead Alliance Partner
Geoff Hopkins, senior manager, Deloitte & Touche LLP – BlackLine alliance technical specialist
Molly Boyle, BlackLine, Director – SAP Solutions
Stephanie Hudson Miller, SAP North America, Vice President, S/4HANA Finance COE
Rachel Sutherland, senior consultant, Deloitte & Touche LLP – BlackLine alliance manager

July 15, 2020



**MAKING AN
IMPACT THAT
MATTERS**
since 1845

Agenda



Approaches for transforming and modernizing accounting technology in 2020



Achieving connectivity and continuous accounting with BlackLine and SAP (Account Reconciliation, Journal Entries, Transaction Matching and Intercompany)



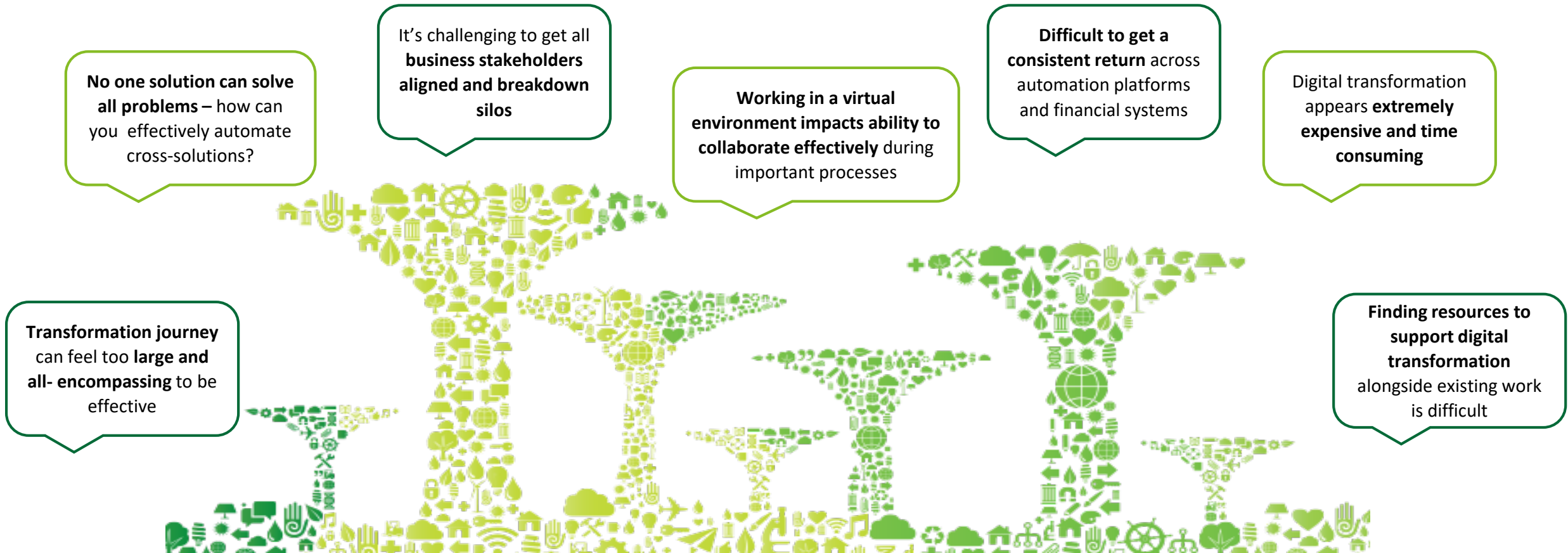
Creating a roadmap for achieving accounting transformation



Q&A

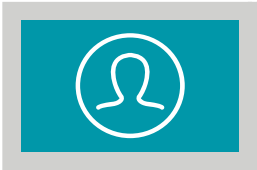
Digital finance and accounting transformation challenges in the market today

We see the market responding in a variety of ways to digital transformation challenges. These include an organization's desire to automate but concern over a lack of consistent return, challenges of working in a siloed environment, and difficulty in effectively automating cross-solution



The importance of modernizing accounting technology in 2020

Now more than ever, organizations should reconsider their use of cloud technologies, automation, and collaboration platforms for long-term virtual accounting work environments



Are my accounting software solutions **on-premise or in the cloud?** How easily **can I access them virtually?**



How streamlined is **document hand-off, checklists, signoffs, and accounting workflow** both in the US and globally?



Can I trust my underlying data architecture and source systems I am relying on for accounting data?



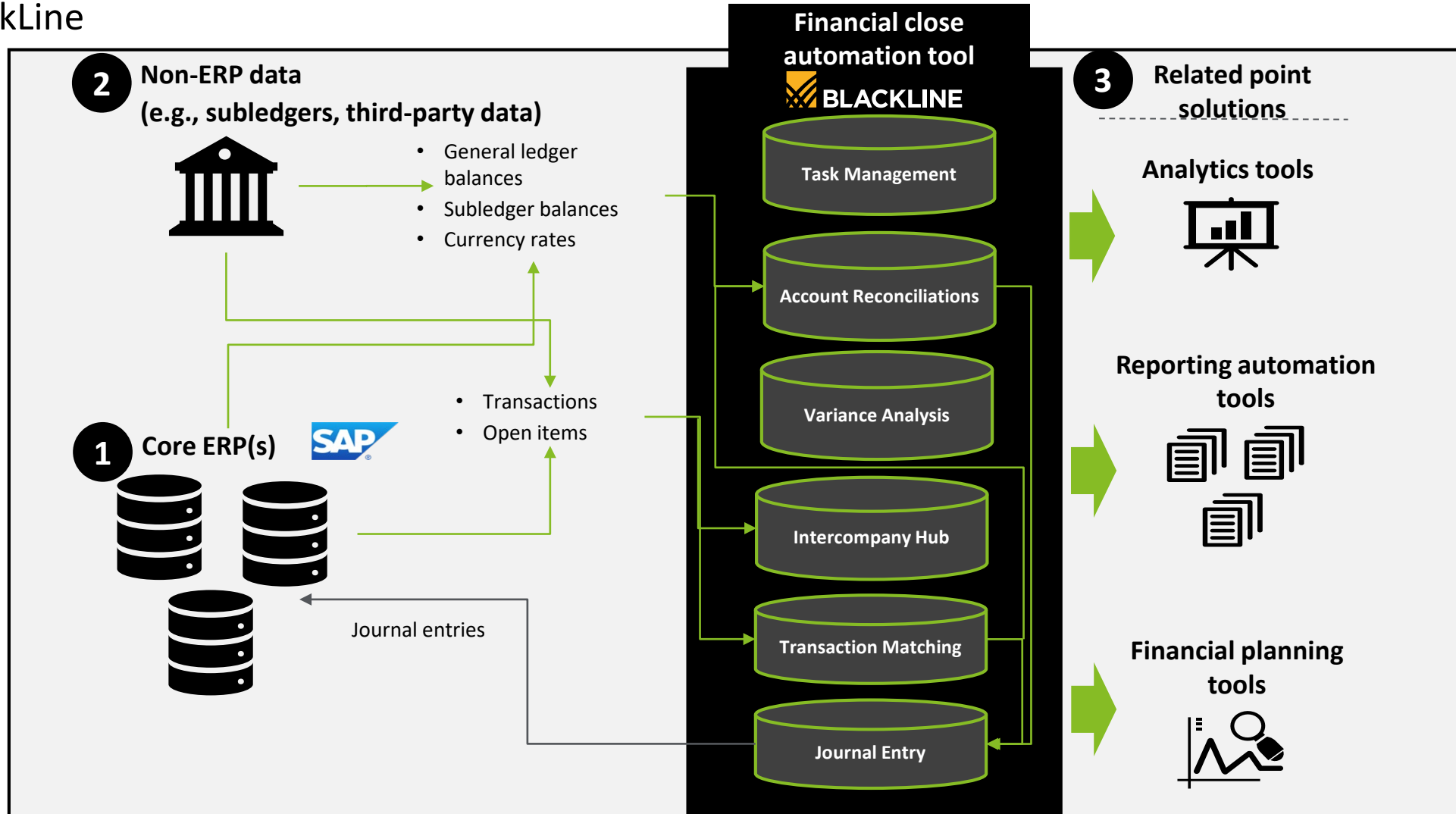
Do I utilize manual accounting process or are portions of my workflow automated?



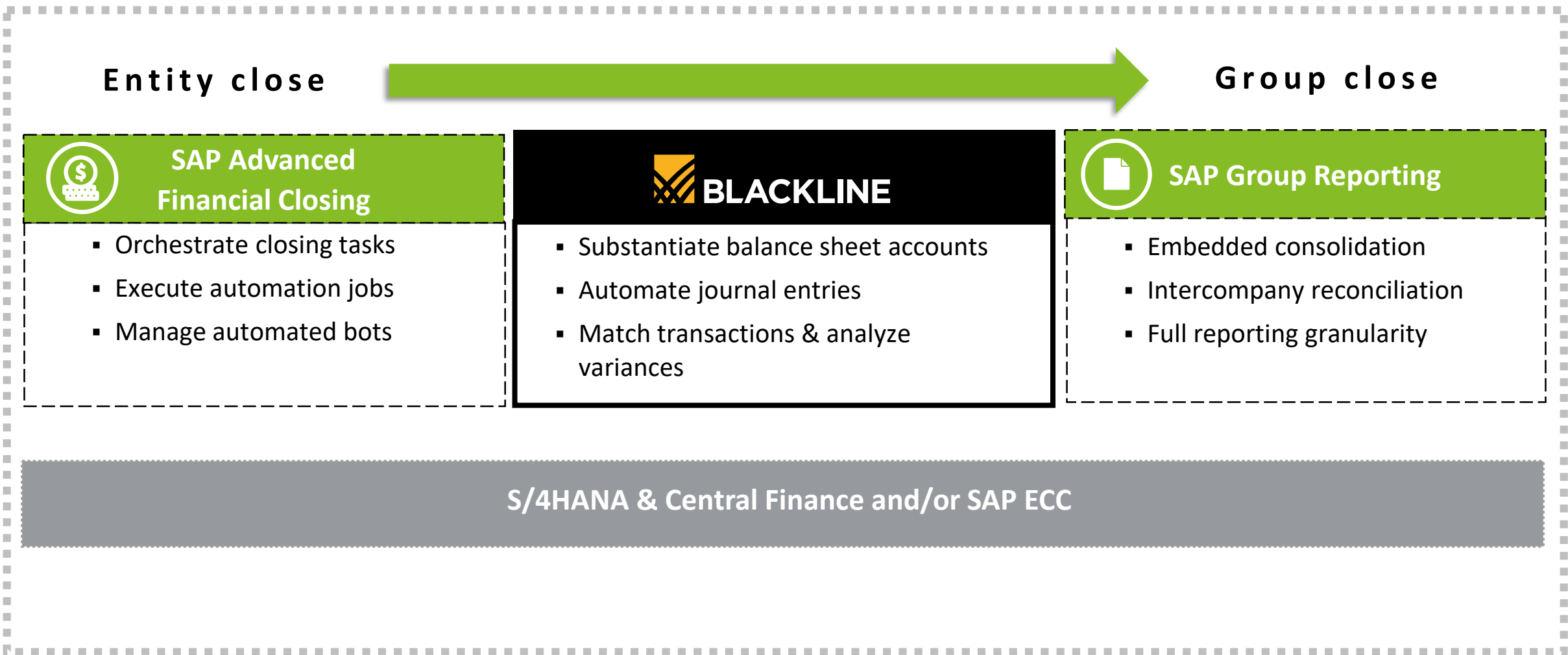
Can I reconcile important accounting information needed for the period-end close and intercompany processes?

Utilizing BlackLine and SAP for greater connectivity during the financial close

A rapid opportunity to modernize connectivity and automate traditional manual processes during the financial close is through the use of joint ERP/Financial Close Automation tool functionality for example, SAP and BlackLine

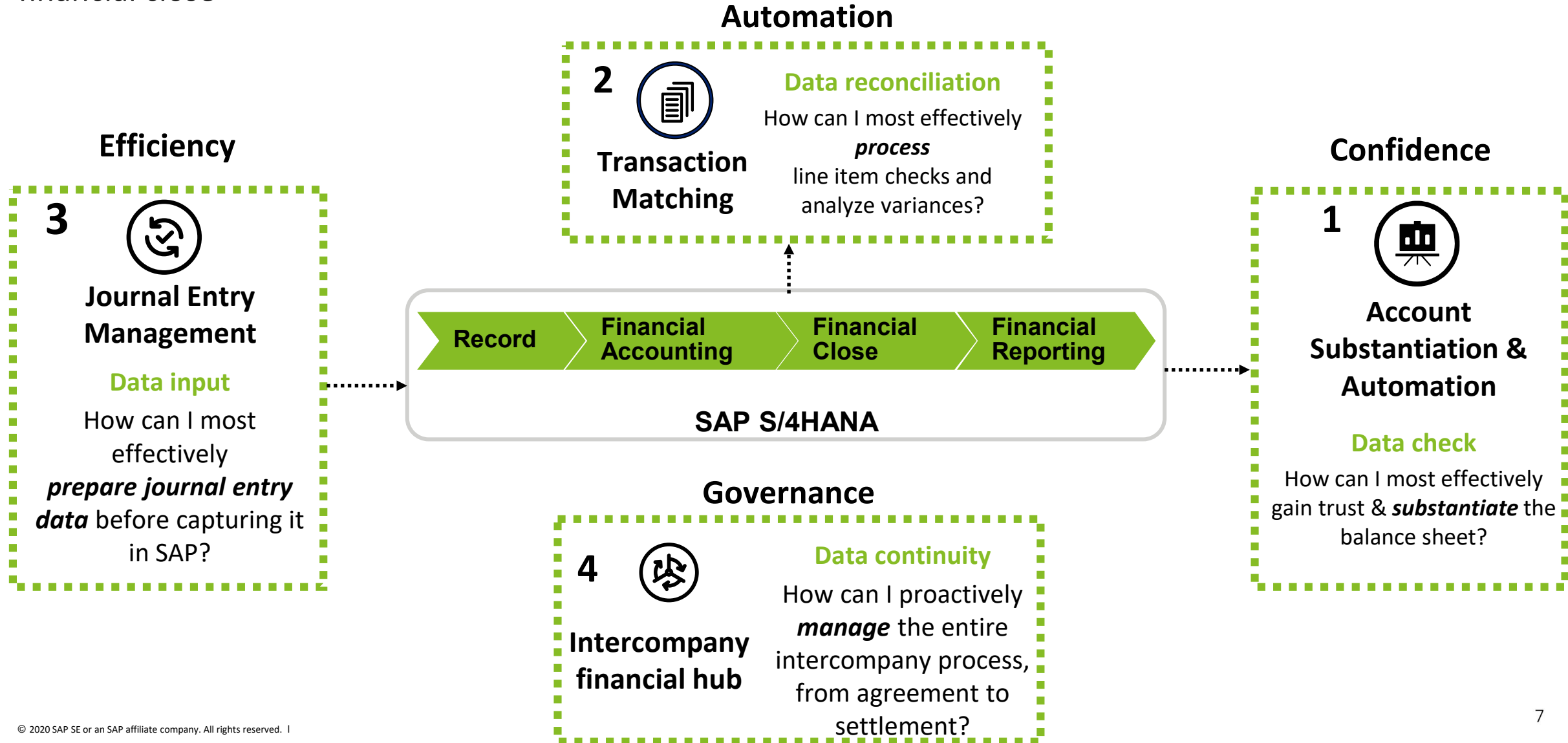


Record-to-report: Key components



Record-to-report: SAP's and BlackLine's integrated solutions

BlackLine complements SAP and related ERPs by delivering added value for a more productive and secure financial close



SAP & BlackLine

What is an SAP® Solution Extension ?

SAP Solution Extensions are strategic third-party solutions developed by independent software partners which offer innovative cross-solution and cross-industry functionalities that complement your SAP business solutions.

- ✓ Partner selection is rigorous and initiated by SAP only
- ✓ SAP premium qualifies, tests and approves the solutions
- ✓ Integrated into SAP product roadmap
- ✓ Sole SAP Solution Extension for the financial close
- ✓ 700+ joint customers



SAP Partner Network (>18,300 Companies)

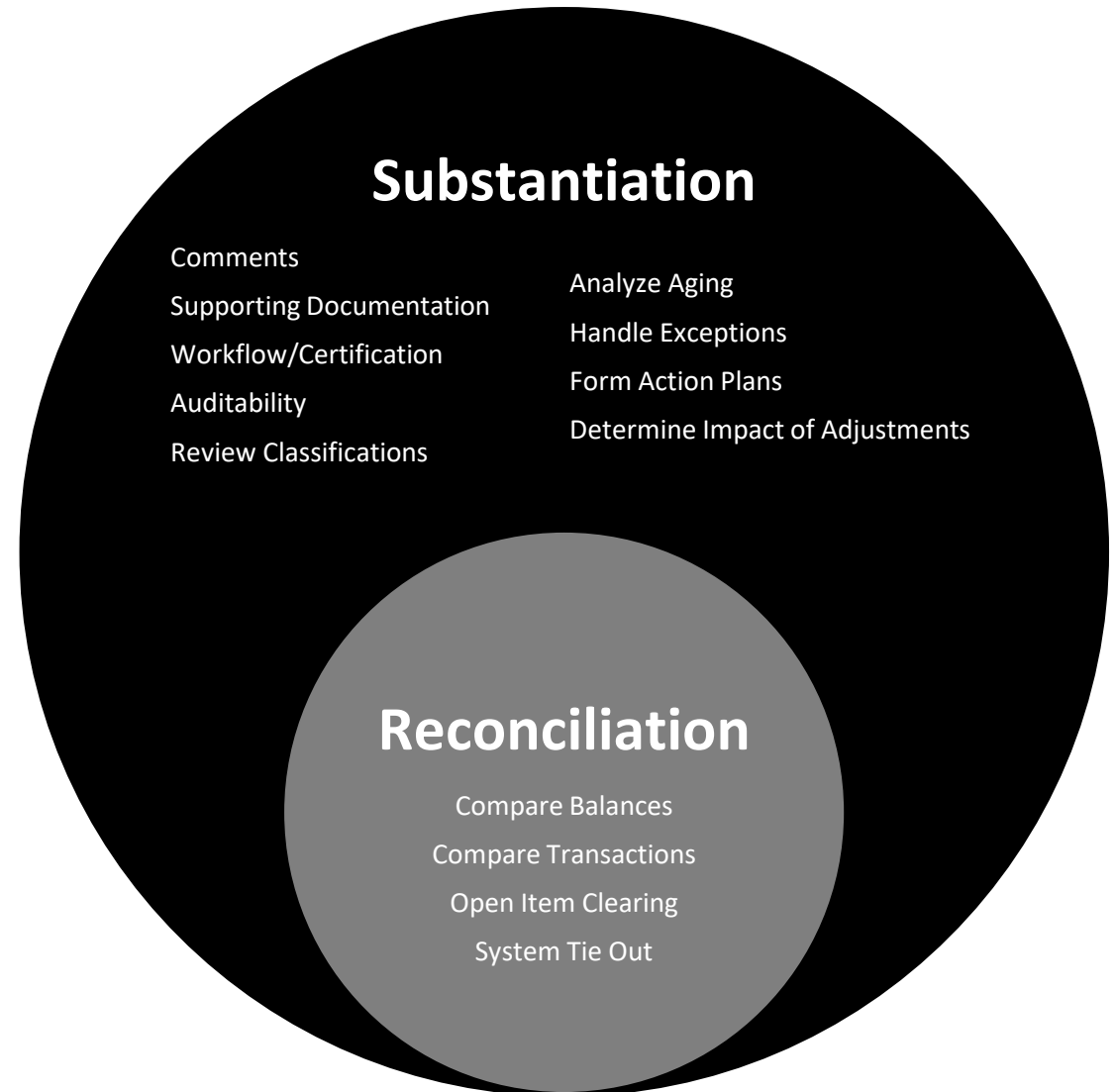
SAP Solution Extensions (31 Companies)

1 Account substantiation and reconciliation

- The account balance **substantiation** process must provide reasonable assurance as to the **accuracy** of financial data at a specific point in time or an **ending balance**

- BlackLine provides **complete substantiation of the process** inclusive of supporting documentation, workflow, exception handling, and adjustments

- BlackLine solutions complement and extend SAP's existing functionality



2 Transaction matching

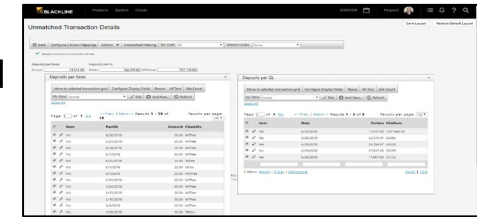
Traditional manual process

- Rainbow spreadsheets
- V-lookups and complex formulas
- Increasing volume
- Mounting open items

Bank Account Number	Check Number	Posting Date	Amount in USD	Document Number	Unit
5244151	00000000	2/10/2015	1,000.00	5244151	UNIT
5244151	00000001	2/10/2015	1,000.00	5244151	UNIT
5244151	00000002	2/10/2015	1,000.00	5244151	UNIT
5244151	00000003	2/10/2015	1,000.00	5244151	UNIT
5244151	00000004	2/10/2015	1,000.00	5244151	UNIT
5244151	00000005	2/10/2015	1,000.00	5244151	UNIT
5244151	00000006	2/10/2015	1,000.00	5244151	UNIT
5244151	00000007	2/10/2015	1,000.00	5244151	UNIT
5244151	00000008	2/10/2015	1,000.00	5244151	UNIT
5244151	00000009	2/10/2015	1,000.00	5244151	UNIT
5244151	00000010	2/10/2015	1,000.00	5244151	UNIT
5244151	00000011	2/10/2015	1,000.00	5244151	UNIT
5244151	00000012	2/10/2015	1,000.00	5244151	UNIT
5244151	00000013	2/10/2015	1,000.00	5244151	UNIT
5244151	00000014	2/10/2015	1,000.00	5244151	UNIT
5244151	00000015	2/10/2015	1,000.00	5244151	UNIT
5244151	00000016	2/10/2015	1,000.00	5244151	UNIT
5244151	00000017	2/10/2015	1,000.00	5244151	UNIT
5244151	00000018	2/10/2015	1,000.00	5244151	UNIT
5244151	00000019	2/10/2015	1,000.00	5244151	UNIT
5244151	00000020	2/10/2015	1,000.00	5244151	UNIT

Modern Accounting

- Rules-based automation
- Suggested matches
- Focus on exceptions
- Automated clearing and adjustments



Examples

- Accruals
- AR/AP
- Bank to GL
- Benefits (ADP/Payroll/Insurance Provider Billing/401K)
- Credit Card (Merchant to POS to GL)
- CRM Operations
- Escheatment
- Gifts & Grants
- Gift Cards
- High Volume Accounts
- Intercompany
- Inventory
- P-Cards
- Payroll
- POS
- Purchasing
- T&E
- Tax Withholding & Remittance
- Unclaimed Property
- Warranty Claims

3 Journal entry automation

Data needed to derive journal entries often comes from outside of SAP as a result of business events that are not yet captured in the ERP. Before posting, entries must be substantiated prepared and approved. Isolating and identifying a complete population of journal entries can be cumbersome in a heterogeneous ERP environment



Traditional manual process

- Thousands of **manual entries** posted annually
- **Duplication of efforts** between JEs and account reconciliations (no process integration)
- Binders, share drives storing supporting documents and approvals
- **Spreadsheets** are used to create entries
- Entries are uploaded **to (many) ERPs**
- Approvals frequently occur after posting to GL
- **Significant effort spent on audit testing**

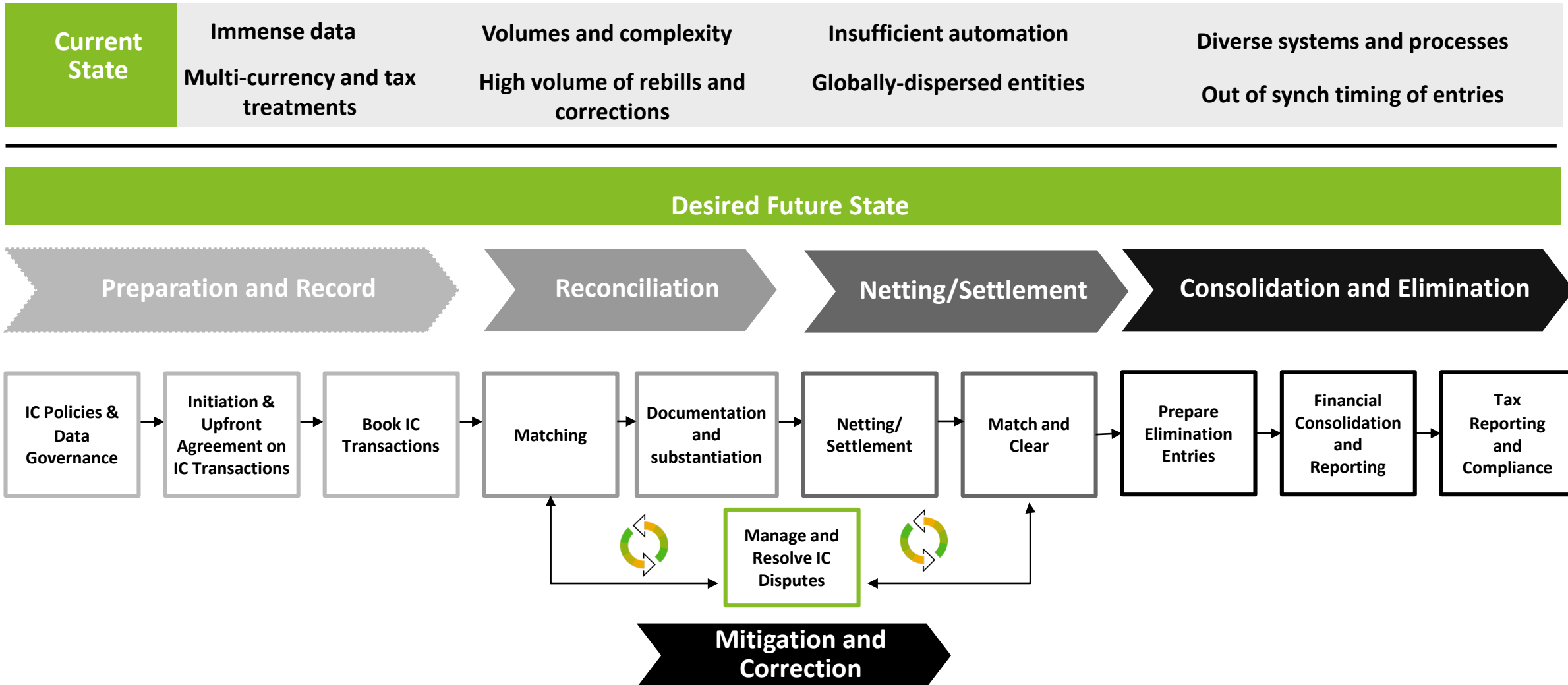


Modern Accounting


- Most **recurring entries fully or partially automated**
- **Master data is auto-validated** against SAP
- Entries can be **“dragged and dropped” as supporting items on balance sheet reconciliations** to eliminate duplicate work
- Business-defined rules drive workflow
- **Audit trail** is seamlessly maintained
- **Segregation of duties** is configured

4 End-to-end intercompany accounting (not just reconciliation)

The intercompany process doesn't start on Day +0. It begins with upfront agreement on transactions and dual-sided bookings minimizing the need for reconciliation.




Marketplace examples

 **Scenario 1**

BlackLine is implemented prior to SAP S/4HANA to support future gaps and enhance capabilities

Company: *Global technology manufacturer*


- Rationalized and stabilized close activities prior to migration to SAP S/4HANA
- Developed process re-engineering for the best future state
- Created operating model capacity

 **Scenario 2**

BlackLine is implemented during an SAP S/4HANA initiative to extend capabilities

Company: *US media provider*

- Coordinated Account Reconciliation and Task Management solution go-live in conjunction with SAP S/4HANA
- Coordinated Journal Entry and Transaction Matching solution to analyze gaps in SAP S/4HANA and supported after go-live

 **Scenario 3**

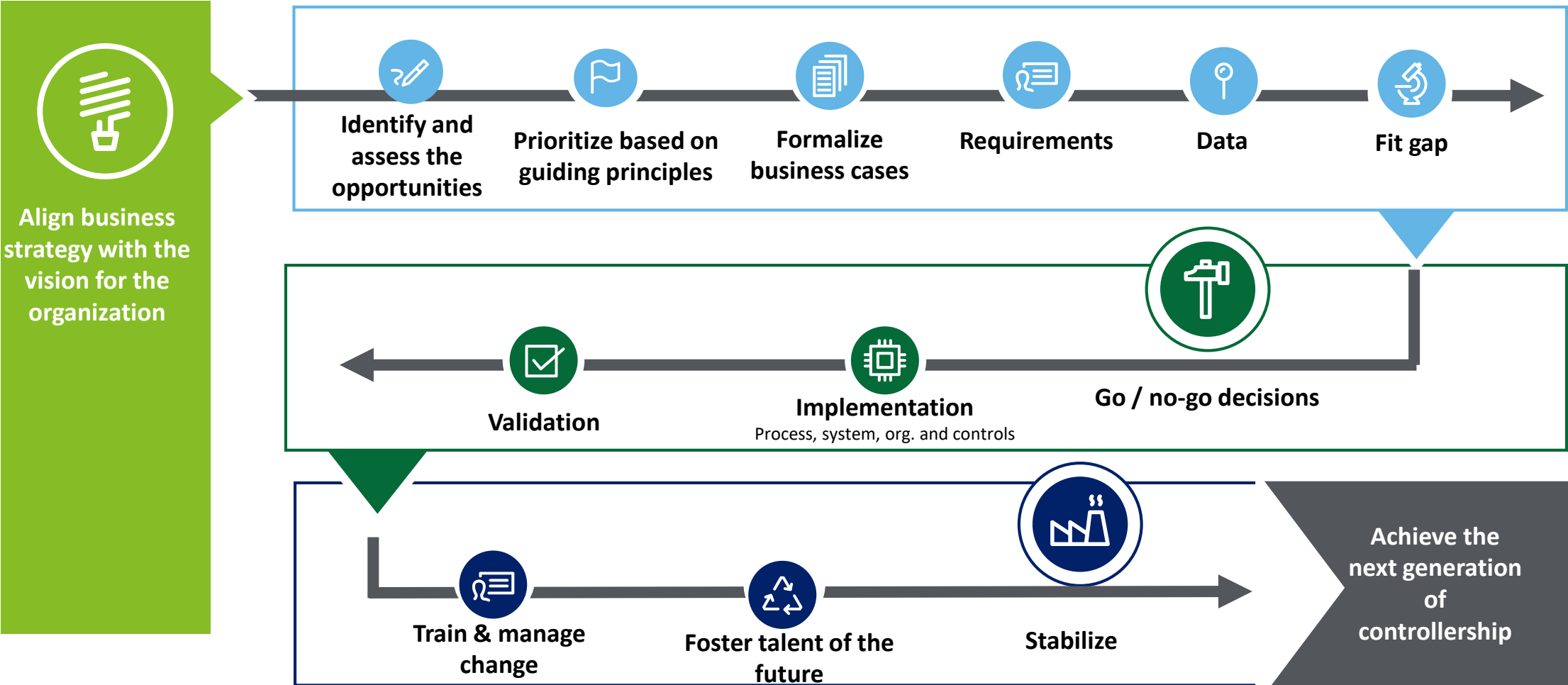
BlackLine is implemented to support a broader finance transformation Initiative

Company: *Global retail company*

- Created connectivity between BlackLine and SAP current and future design considerations
- Facilitated operating model transformation

Creating a roadmap for accounting technology modernization

How can you shift from aspirational ideas to real business cases and implementation of digital solutions?



Working together to help you transform your financial close experience

The synergy of three leaders offering one integrated approach represents a powerful opportunity to transform your business, innovate, grow, and thrive in an evolving landscape

Deloitte's SAP finance capabilities

Deloitte's dedicated SAP practice and long-term collaboration help your business 'reimagine everything', get the most out of your SAP investments, and position your business for future digital demands.

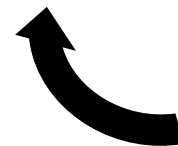
**SAP S/4HANA partner of the year,
large enterprises - 2020**



Deloitte's SAP and BlackLine capabilities

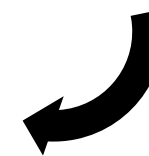
Our long-term collaboration with Blackline and access to a globally-aligned network of member firms position us well to assist with global implementations in-region or remotely.

These capabilities span more than 10 years with more than 150 implementations and more than 100 trained Deloitte professionals in BlackLine



BlackLine SAP Alliance

The BlackLine-SAP Premium Qualified solutions complement your SAP environment by automating processes, strengthening controls and streamlining core close tasks, including use cases such as balance sheet substantiation, journal entry processing, high-volume transactions, clearing open items and intercompany accounting.





Question and answer



This presentation contains general information only and Deloitte is not, by means of this presentation, rendering accounting, business, financial, investment, legal, tax, or other professional advice or services. This presentation is not a substitute for such professional advice or services, nor should it be used as a basis for any decision or action that may affect your business. Before making any decision or taking any action that may affect your business, you should consult a qualified professional advisor.

Deloitte shall not be responsible for any loss sustained by any person who relies on this presentation.

As used in this document, "Deloitte" means Deloitte & Touche LLP, a subsidiary of Deloitte LLP. Please see www.deloitte.com/us/about for a detailed description of our legal structure. Certain services may not be available to attest clients under the rules and regulations of public accounting.