

Deloitte.



**Forging ahead,
focusing on innovation**

2017 Engineering and Construction Conference
June 26-28, 2017



2017 Engineering and Construction Conference Steering Committee Members

Brian Albanese	–	Lithko Contracting
Bona Allen	–	Kajima USA, Inc.
Mike Anderson	–	Layne Christensen
Christa Andresky	–	Turner Construction
Barbie Bigelow	–	Jacobs
Emily Gepner	–	AECOM
Veronica Lubatkin	–	Railworks
Tony Mirchandani	–	RTM Associates
Greg Nook	–	JE Dunn
Kirk Rabius	–	AECOM
Susan Sonnefeldt	–	DAR
Jon-Paul Weiss	–	Comfort Systems





Deloitte.



M&A due diligence workshop



Todd Bauer

5m



Todd Bauer Welcome to this year's conference. Thank you for coming.

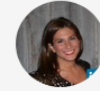


Promoted Post

You are viewing a preview. Join to chat and get updates on this channel.

Join Channel

Search



Ashley Brusso

Manage your profile



Welcome



Full Conference Agenda



Map



Speakers



Thoughtware



Messages



WiFi Information

Settings

Logout/Switch Event

App By DoubleDutch



Preparing for takeoff: Chicago airport expansion discussion



Ginger Evans
Chicago Department of Aviation Commissioner