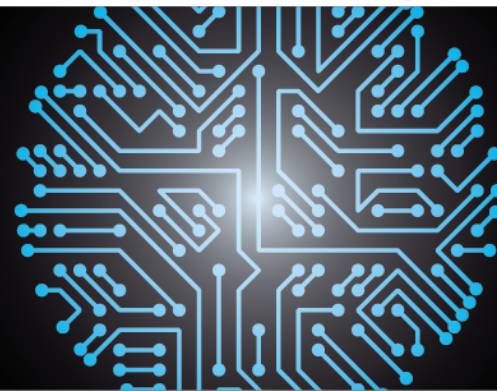


Indirect tax compliance co-source services



Value to your company

Whether preparing 40 returns per month or 400, indirect tax compliance can consume a significant amount of your company's limited indirect tax resources. Time that could be instead focused on more valuable tasks such as refund/ exposure reviews, audit defense, exemption certificate compliance, taxability research, or G/L account reconciliations.

Whether it is dealing with the consolidation of multiple data sources, manually preparing returns, populating reports to aid in general ledger account reconciliation, or handling jurisdictional notices, indirect tax compliance is often a time consuming and tedious process. Inaccurate compliance may result in significant penalties and interest, overlooked refund opportunities, an increase in tax notices, and the potential for financial reporting issues.

Leverage Deloitte's technology and knowledge to potentially help your company:

- Efficiently prepare hundreds of state and local tax filings
- Handle personnel turnover challenges
- Better manage internal staff and personnel workloads
- Free up time for other value-add projects

Process and deliverables

Deloitte's indirect tax compliance co-source services comprise the following steps/ processes:

1. Transition — During this phase, we meet with you to gather information to allow us to configure our software and map your company's tax source data. We perform parallel testing to get comfortable with transition of information.
2. Data Consolidation and Reconciliation — On a monthly basis, we provide you with a report reconciling your company's tax source data to tax payments due.
3. Return Preparation — We prepare tax returns for your review and approval and if requested, attach your digital signature to approved returns.
4. Finalizing Returns — If appropriate, we then e-file returns as instructed by the company and provide returns and data in your company's prescribed format.

Why Deloitte?

- Dedicated indirect tax compliance center in Chicago, IL
- Rapid and effective transition
- Efficient processes and technology tailored to your objectives
- Focus on timely resolution of indirect tax notices
- Dedication to quality and client service
- Industry specific experience

Our approach and tools

Deloitte leverages leading technology tools and processes in the delivery of indirect tax compliance co-source services.

Our approach is focused on:

- Adopting a methodology that addresses your company's objectives
- Efficiently transitioning your company's current tax preparation obligations
- Providing returns timely for your review and approval
- Providing feedback on discovered data or tax compliance issues
- Providing reports in the requisite format, including reconciling tax source data to tax payments
- Addressing indirect tax notices in a timely manner and providing notice status via a notice tracker

We leverage our Deloitte Online technology to provide electronic copies of returns for the company's review and approval.

Timing and fees overview

Our focus on an efficient transition allows us to initiate return preparation services on behalf of most clients in less than 30 days. Our one-time implementation fee is based on the setup required and the complexity of your data and includes a one-month comparison of our returns to your prior year returns.

We can work with you to establish a fixed fee arrangement based on the number of returns we prepare for your company annually to help you better define your costs of compliance.

Should your company need additional indirect tax consulting assistance outside of return preparation (e.g., audit defense, tax research, etc.), we can provide competitive hourly rates and leverage our network of dedicated indirect tax professionals to address your company's objectives.

For more information, contact:

Brian Little
Tax Managing Director – Indirect
Compliance Services
+1 312 486 2426
blittle@deloitte.com

Qualifying questions:

- Does the preparation of indirect tax returns take weeks per month?
- Are limited resources being spent on preparation/filing of returns?
- Does your company have multiple sources of data that need to be consolidated?
- Does your company prepare returns manually or use licensed tax software and still spend significant time preparing returns?
- Has your company experienced turnover of indirect tax compliance personnel?
- Is your company making acquisitions or expanding nexus activities that are creating increased filing requirements?
- Is your company receiving a high volume of indirect tax notices from taxing jurisdictions?
- Does your company have exposure to taxing authority audits and related potential financial reporting errors from improperly filed tax returns?

Potential benefits:

- Dedicated team of tax professionals
- Leverage process and technology
- Reduced errors and notices

This service summary contains general information only and Deloitte is not, by means of this summary, rendering accounting, business, financial, investment, legal, tax, or other professional advice or services. This summary is not a substitute for such professional advice or services, nor should it be used as a basis for any decision or action that may affect your business. Before making any decision or taking any action that may affect your business, you should consult a qualified professional advisor. Deloitte shall not be responsible for any loss sustained by any person who relies on this summary.