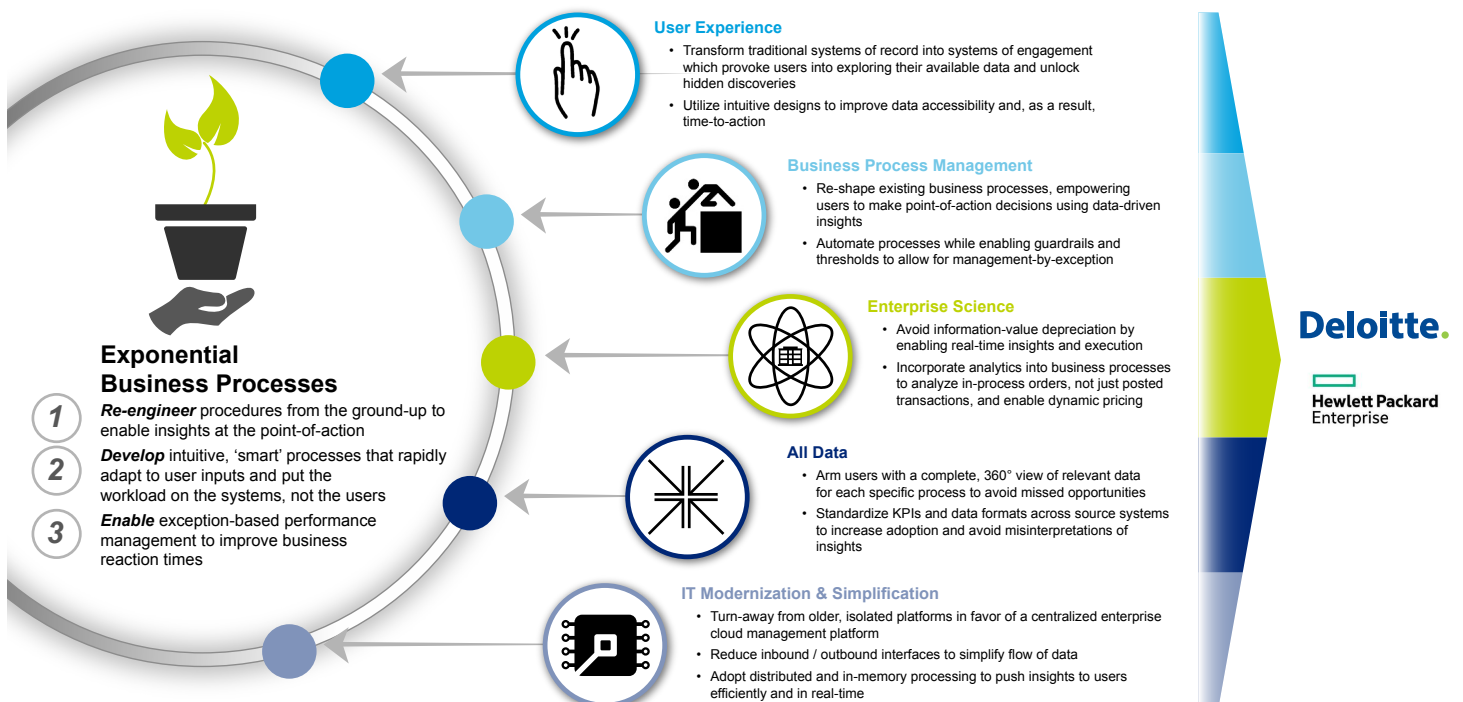


## At the heart of a reimagined enterprise is a new digital core Deloitte and HPE trailblaze SAP S/4HANA modernization

SAP continues to develop and enhance solutions that organizations today rely on to power their businesses. New products, features, and functionality from SAP offer a way to keep pace with the forces of competition, the customer, and innovation trends. And the latest suite of SAP® S/4HANA solutions can truly modernize, allowing enterprises to run on a new digital core.

### The reimagined enterprise

The new, tightly integrated S/4HANA platform provides a myriad of benefits. It allows advanced analytics to push insights into action, exponential benefits in time and efficiencies, and the ability to easily transition from on-premise to Cloud. Additionally, the business is empowered to tap into the opportunities emerging from the “Internet of things” and quickly outpace competitors who are slower to adapt the new technology. Finally, adopting a modern SAP® platform allows organizations to move away from high-maintenance customized solutions—toward a new core of SAP® tools addressing needs that previously fell into the realm of “custom.”



Modernizing from the core of your IT allows extraordinary benefits to flow throughout the enterprise. Think of it as a heart transplant on an ailing patient—the new organ revitalizes every system in the body, from bone health to brain functionality.

#### **Around the globe and across industries, modernization makes an impact**

As an award-winning Global SAP Services Partner with 12,000 dedicated SAP practitioners, Deloitte has been in a position to lead innovation with SAP technologies. The impacts of S/4HANA client modernizations have been achieved across industries. Here are a few highlights.

#### ***“Quote-to-Cash Digitization” allows global oil and gas distributor to improve sales and customer satisfaction***

Deloitte implemented the very first digital footprint of the sales order process on S/4HANA with cloud enablement. The results, disparate means of order creation were replaced with centralized, real-time reporting integrated with the new Fiori UX. The improved order processing response time and advanced analytics parlayed to greater business insights, internal efficiencies and a sales boost from the bottom 40 percent of the customer base.

#### ***Insurance company experiences financial transformation with S/4HANA Simple Finance***

One of the largest insurance companies in the world was using legacy SAP systems and sought a fully integrated finance system. They converted to the S/4HANA platform, leading to enhanced transparency, accuracy, and congruous data elements that helped drive alignment across external and internal reporting. The reduced data footprint, faster transactional processing, and access to real-time data enables users to report and analyze on the go.

#### ***Global agri-business company applies analytics to a pricing model that optimizes profits***

Implementing Strategic Pricing Accelerator (SPx) Analytics allowed a global agriculture company to quickly perform targeted analysis for pricing opportunities by using SAP S/4HANA as a platform. It collects and synthesizes high volume pricing-related data from multiple ERP sources in real-time. The solution enables pricing engine(s) to run and optimizes the profit margin. The analytics on top of a sustainable data source will provide additional diagnostics insights into pricing opportunities not before realized.

Each of the businesses mentioned above have begun

their journey to core modernization. Once one part of the enterprise has blazed the trail to implement a use case on the new platform, other business units typically follow suit. The ripple effect continues to move throughout enterprises as the S/4HANA technology moves out of its nascent stage.

#### **Cloud offering accelerates the S/4HANA journey**

As much as SAP's new S/4 platform can transform the way organizations operate and profit, new models of Cloud deployment are revolutionizing time-to-value and the total cost of ownership (TOC). Combining Hewlett Packard Enterprise's (HPE) leadership in SAP infrastructure and Deloitte's global experience in SAP implementations, we have created a new framework to rapidly deploy HPE Helion Managed Virtual Private Cloud. The cloud offering provides three fundamental potential benefits:

- 1.** Decreases TCO by transitioning organization's IT financial model from CapEx to OpEx
- 2.** Shortens time-to-value by accelerating re-platforming and modernization
- 3.** Allows the IT professionals to move from maintenance to innovation, with benefits that transfer to the bottom line

#### **Getting started with the Deloitte and HPE modernization assessment**

Whether you are an organization heavily in SAP® technologies, or taking a first look at an SAP implementation, determining when, how, and what infrastructure model (on-premise, hybrid or Cloud) can be daunting. New in 2016, Deloitte and HPE offer an intensive six to eight week assessment to jump-start the journey to reimagine your core. Deloitte SAP practitioners will engage with you for an in-depth analysis of your current state including conducting workshops to understand your business process and assess your security, compliance and legal requirements. We will also conduct a complete system health check of your AS-IS landscape. At the conclusion of the assessment, you will understand the cost savings with a new platform, opportunities for enhanced business processes with in-memory computing, and a roadmap with a proposed deployment timeline.

### **HPE purpose-built systems for S/4HANA**

The HPE ConvergedSystem for SAP HANA portfolio is designed to support SAP's latest generation business suite, SAP S/4HANA. These optimized systems are built to deliver the highest levels of performance and availability for in-memory computing initiatives. From managing analytics and data warehousing workloads to running mission-critical business applications, the HPE ConvergedSystem can help businesses unlock operational efficiencies and turn large amounts of data into real-time, actionable business insights.

- HPE ConvergedSystems infrastructure is the industry's most powerful system for SAP HANA
- End-to-End Integration and order-to-operation in as few as 15 days
- HANA assessment and migration services to support client on the migration journey
- Flexible S/4 infrastructure: On-premise, hybrid or as-a-service using HPE Helion Managed Virtual Private Cloud

### **Let's talk**

To learn more about SAP S/4HANA modernizations and the assessments, all it takes is a conversation. Contact us to get the conversation started. We can provide a detailed explanation on our process as well as additional insights that can help you get started today.

### **Contacts**

#### ***Jag Bandla***

Principal  
Deloitte Consulting LLP  
[jbandla@deloitte.com](mailto:jbandla@deloitte.com)

#### ***Soumya Chakravorty***

Director  
Deloitte Consulting LLP  
[schakravorty@deloitte.com](mailto:schakravorty@deloitte.com)

[www.deloitte.com/SAP](http://www.deloitte.com/SAP)

### **About Deloitte**

As used in this document, "Deloitte" means Deloitte Consulting LLP, a subsidiary of Deloitte LLP. Please see [www.deloitte.com/us/about](http://www.deloitte.com/us/about) for a detailed description of the legal structure of Deloitte LLP and its subsidiaries. Certain services may not be available to attest clients under the rules and regulations of public accounting.

This publication contains general information only, and none of the member firms of Deloitte Touche Tohmatsu Limited, its member firms, or their related entities (collective, the "Deloitte Network") is, by means of this publication, rendering professional advice or services. Before making any decision or taking any action that may affect your business, you should consult a qualified professional adviser. No entity in the Deloitte Network shall be responsible for any loss whatsoever sustained by any person who relies on this publication.