

# Medical Imaging Suite

## Building Cloud-Native Medical Imaging

Although this is the digital age, radiologists often find it challenging to interpret, collaborate, and make accurate diagnoses due to the present economics of storing, processing, and accessing medical images. Organizations are searching for a solution that would improve patient care, speed up diagnostics, and provide for secure image access.

The Google Cloud Medical Imaging Suite offers a full-featured, cloud-native medical imaging solution that supports secure image access from any location and faster diagnoses that improve patient care.

In collaboration with Google Cloud, Deloitte is assisting organizations with the development of AI for imaging to promote quicker, more accurate image diagnosis, more productivity for healthcare providers, and better patient access.



## Why Cloud-Native Medical Imaging Suite

**Medical images are growing in number.** Storing in multiple, siloed on-premises data centers increases capital expenses by expanding storage and maintenance costs.

**Hospital data is often exposed to cyberattacks.** Aging servers, outdated software, and multiple on-premise locations is often attributed to less secure platforms.

**Radiologist shortages and increasing use of medical images.** Radiologists should be able to read, diagnose and collaborate on images anywhere in real time.

**Analytics performed on medical images are lacking.** Metadata contained within images has the potential to provide valuable insights with analysis.



**Image ingestion** supports a variety of different sources and approaches to conform to DICOM standard



**Analysis of metadata and image data.** Algorithms employed by Google Cloud assist in de-identifying information to make it available for research purposes

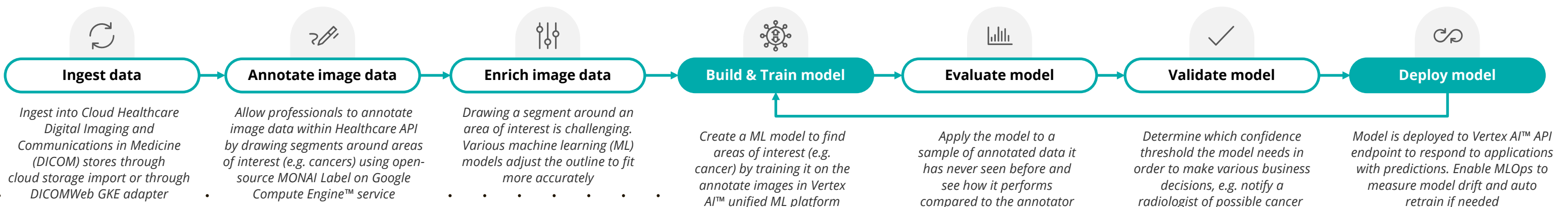


**Scalable AI** enables organizations to perform advanced analytics and aids in development of advanced computer vision models



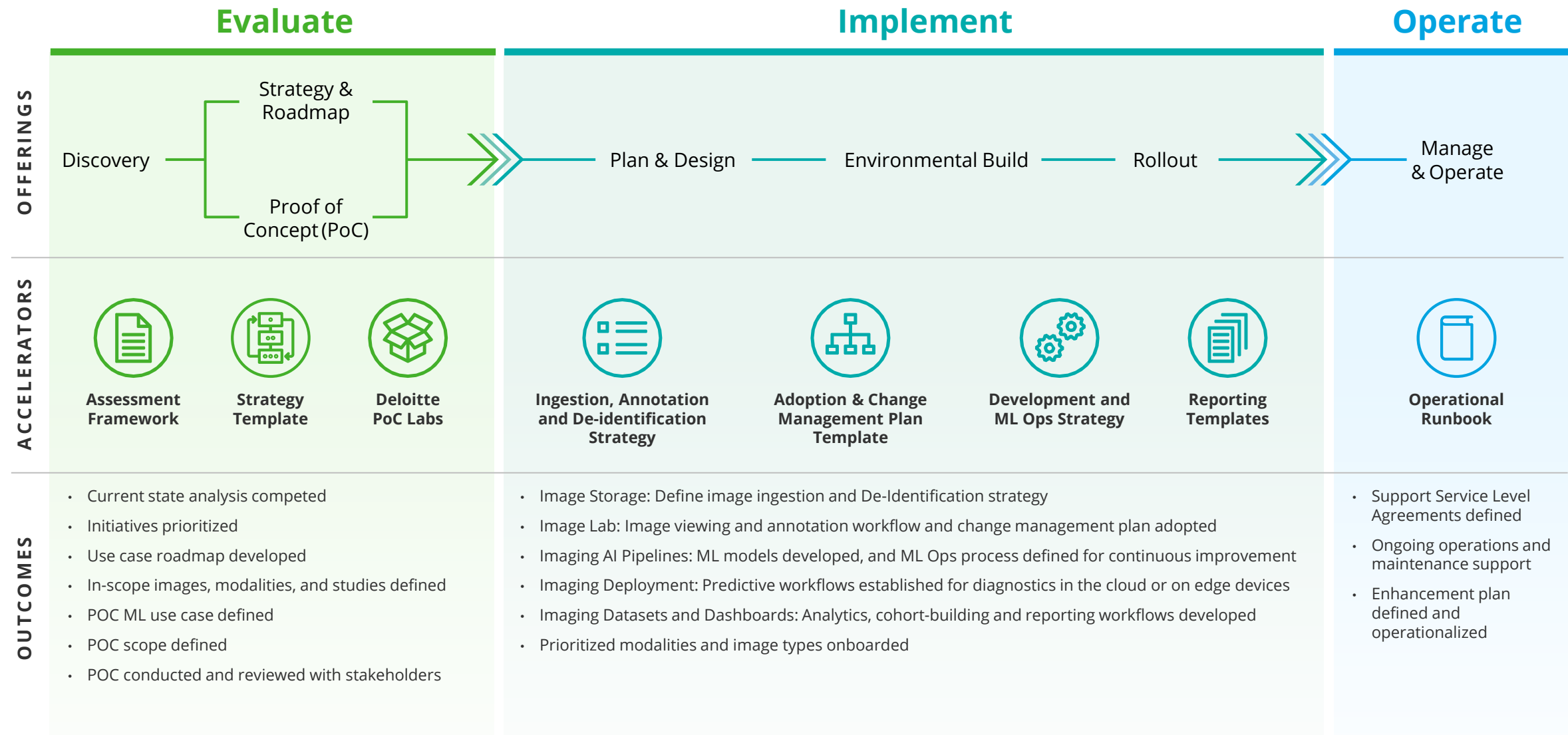
**Security and compliance** achieved as Cloud Healthcare API allows easy and secure data exchange using international DICOMweb standard for imaging

## Medical Imaging Suite Solution Overview



# Our Approach to: Medical Imaging Suite Implementation

Deloitte brings an industry standards-based methodology combined with technical experience to enable organizations to leverage petabytes of medical image data at enterprise scale.



Copyright © 2023 Deloitte Development, LLC. All rights reserved.

## Medical Imaging Suite Solution Benefits



**Drive quicker, more accurate diagnosis** by automatically uploading images, making available to view sooner, and reporting findings faster



**Improve services to stakeholders** by leveraging image data and enabling analytics to drive insights



**Secure access to images anywhere at anytime** by leveraging Zero Trust framework that authenticates and validates the users accessing the data



**Lower infrastructure and maintenance costs** by migrating to the Cloud and leveraging cloud services / tools



**Enhance provider experience** with ease of access to images via a web application or easy to use viewer

## START THE CONVERSATION



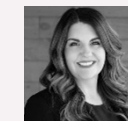
**Chris Goodman**  
Managing Director  
Google Cloud Alliance Health Care - GTM Lead  
Deloitte Consulting LLP  
[chrgoodman@deloitte.com](mailto:chrgoodman@deloitte.com)



**Frank Farrall**  
Principal  
AI Ecosystems & Platform Leader  
Deloitte Consulting LLP  
[frfarrall@deloitte.com](mailto:frfarrall@deloitte.com)



**Matt James**  
Specialist Leader | Life Sciences & Health Care  
Deloitte Consulting LLP  
[mjames@deloitte.com](mailto:mjames@deloitte.com)



**Courtney Claussen**  
Senior Manager | Life Sciences & Health Care  
Deloitte Consulting LLP  
[cclaussen@deloitte.com](mailto:cclaussen@deloitte.com)



**Phil Businger**  
Specialist Leader | Life Sciences & Health Care  
Deloitte Consulting LLP  
[pbusinger@deloitte.com](mailto:pbusinger@deloitte.com)



**Rahul Khatkhedkar**  
Senior Manager | Life Sciences & Health Care  
Deloitte Consulting LLP  
[rkhatkhedkar@deloitte.com](mailto:rkhatkhedkar@deloitte.com)

This publication contains general information only and Deloitte is not, by means of this publication, rendering accounting, business, financial, investment, legal, tax, or other professional advice or services. This publication is not a substitute for such professional advice or services, nor should it be used as a basis for any decision or action that may affect your business. Before making any decision or taking any action that may affect your business, you should consult a qualified professional advisor. Deloitte shall not be responsible for any loss sustained by any person who relies on this publication.

All product names mentioned in this document are the trademarks or registered trademarks of their respective owners and are mentioned for identification purposes only. Deloitte Consulting LLP is not responsible for the functionality or technology related to the vendor or other systems or technologies as defined in this document. As used in this document, "Deloitte" means Deloitte Consulting LLP, a subsidiary of Deloitte LLP. Please see <http://www.deloitte.com/us/about> for a detailed description of our legal structure. Certain services may not be available to attest clients under the rules and regulations of public accounting.

Copyright © 2023 Deloitte Development LLC. All rights reserved.