

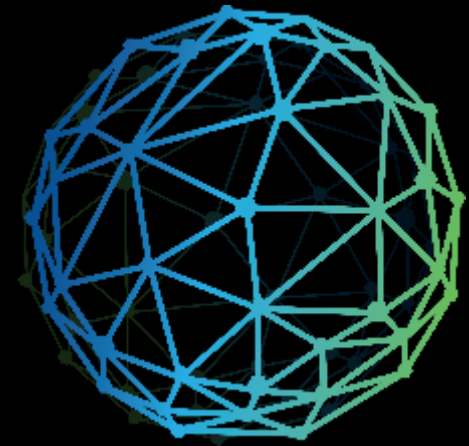


Microsoft Modern Workplace Services

Technologies that modernize the workplace—from transformation planning and architecture to execution.

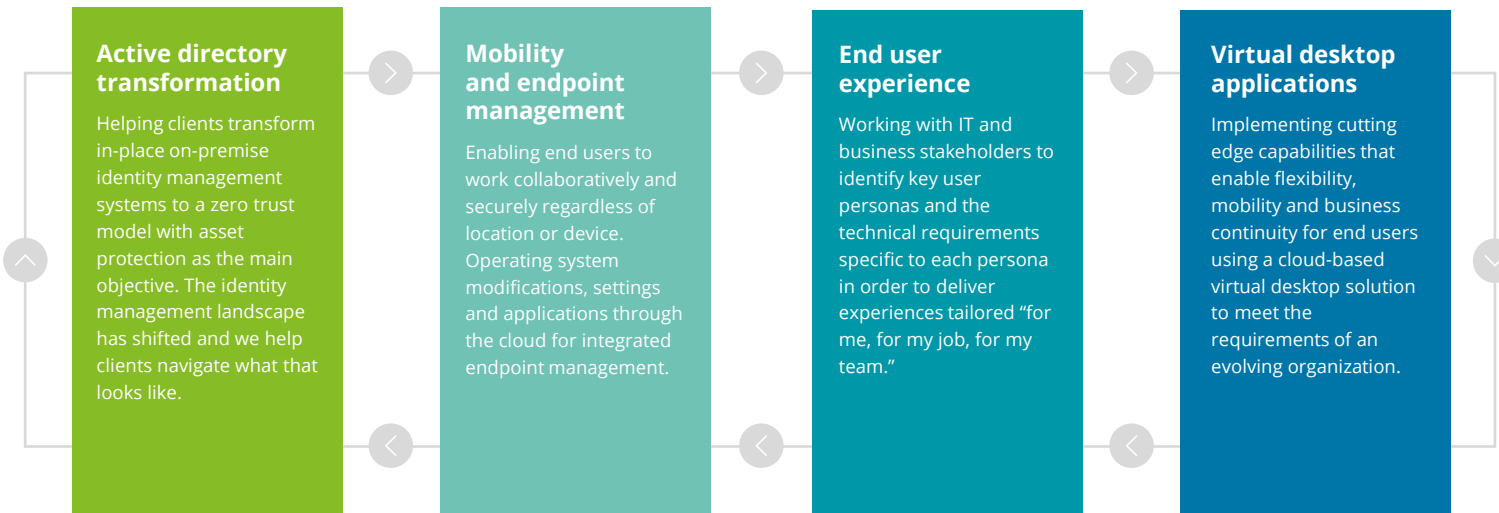
A global pandemic sparked collective rethinking around productivity and improving the work experience. Organizations struggle to empower, engage, and retain employees. Increasingly, enterprises are moving or have moved to a hybrid work model to meet the expectations of a new generation, and competing labor markets for skilled IT professionals. As enterprises compete in the market to reduce costs to their businesses and their customers, retain employees and modernize their work environments with automated workflows or copiloted work, Deloitte can transform employee interfaces for a better user experience, and provide innovative enterprise tools, such as AI or generative AI, and build a modern workspace that reduces customer response time and reduce work-intensive operations.

Deloitte brings its capabilities of delivering Modern Workplace solutions that allow employees to work collaboratively and securely, anywhere, anytime. We bring a portfolio of integrated and holistic services with vast functional, technical, and industry experience to help clients modernize and unlock greater value from their technology infrastructure.



Transform your workplace

Deloitte's Modern Workplace Services optimize operating system/application deployments such as Microsoft Teams, SharePoint, Power Platform, Copilot, and other Microsoft capabilities. Our approach to solutions leverages cloud-based products such as Microsoft Intune to manage operating systems as well as mobile devices. Our relationships with key vendors allow us to bring the best solutions to our clients. With our device-as-a-service offerings, you pay for what you use, rather than making a fixed upfront capital investment. The Deloitte difference is that we can help you articulate business value to decision makers and help you implement the solutions to deliver that value. Key capabilities include:



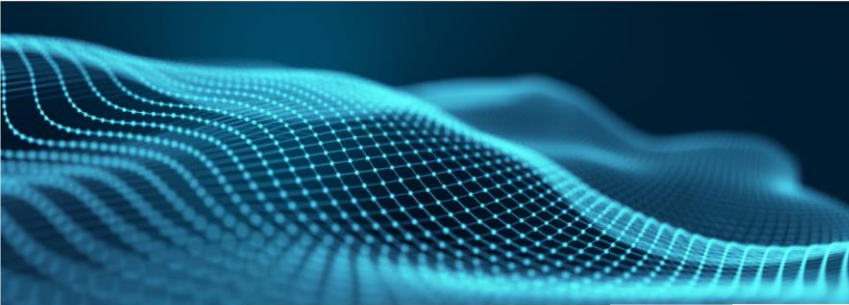
Client successes

Regional bank implements modern desktop management

This 2,000-employee financial institution was operating with an outdated and unstandardized workstation fleet, which presented security risks and significantly stressed its IT department. Deloitte assessed the fleet, personas, technology spend, IT level of effort, and end user support. We designed a cloud-based solution for a zero-touch workstation deployment that did not require IT involvement. Partnering with a DaaS provider to roll out new hardware, we targeted priority lines of business and replaced the bank's issue management software with standard ServiceNow modules and implemented modern desktop management tools: Microsoft Intune and Autopilot.

Cloud-based technology allows company to quickly integrate new organizations

Deloitte helped a major developer and marketer of technology build a program that would make it possible to quickly integrate collaboration solutions from companies it had acquired. Deloitte teams identified affected workplace services and assets and, through migration tooling and an efficient, standardized approach, moved acquired companies' modern workplace systems and organizations into the acquiring entity by leveraging Azure Virtual Desktop. We developed custom tooling and scripts to complete critical path activities within our client's identity systems and exceeded rigorous security requirements, while meeting migration timelines.



Why Deloitte?

Deloitte's Microsoft Technology Services Practice connects your business ambitions to all that cloud makes possible, helping you create an innovative new reality and future.

Innovate with confidence

We help your cloud investment drive value quickly by understanding how to translate Azure's capabilities into your desired business outcomes.

Connect for impact

Deloitte builds on the technology you know and integrates a portfolio of industry- and-domain-specific tech capabilities—optimized to deploy on any technology you choose—to accelerate and amplify cloud's impact for your business.

Realize your possible

Deloitte's advise, implement, and operate capabilities—built on decades of large-scale transformations and collaborations with tech organizations and complex ecosystems—are trusted to help you realize your possible and modernize your future.

Recognized leader

For the most up-to-date list of our analyst accolades, please see our [website](#).

Modernize to unlock greater value

Our clients rely on us to help them choose the technologies that create a productive work environment whether employees are working from home, in a local office, or across the globe. Some of the biggest potential benefits include:

Productivity	Collaboration	Profitability	Centralization	Virtualization	Alignment
Empower a modern flexible workplace that enhances productivity while reducing attrition of top talent	Increase collaboration and workflow among dispersed teams to achieve better customer outcomes	Improve utilization of existing IT infrastructure, decreasing costs and increasing profitability	Deliver unified user experiences with more centralized and controlled management of software environment	Expand capabilities and reduce capital expenses through virtualization	Improve alignment between IT and business leaders to inspire innovation and drive growth

Deloitte is a recognized leader in Microsoft Modern Workplace solutions

Spanning multiple technologies, Deloitte provides services across the entire Microsoft Modern Workplace life cycle from strategy through transformation. We focus on building our capabilities to serve diverse clients globally:



Experience

Global talent pool with experience in MDM, MAM, VMware, Intune, and more



Training and certifications

25,000+ trained Microsoft technology practitioners and 26,000+ certifications in Microsoft practice globally



Cross-functional engagement

Leverage Deloitte organizations including Mergers & Acquisitions, Human Capital, Strategy & Technology,

Get in touch

Deloitte's Microsoft Technology Services Practice

Practice Leadership

Jagat Patel
CCO & Global Practice Leader
Deloitte Consulting LLP
jagpatel@deloitte.com

Technical Solutions and Delivery

Charlie Olson
Managing Director, Modern Work
Deloitte Consulting LLP
chaolson@deloitte.com

Sales and Opportunities

Courtney Kidd Chubb (Global)
Global Growth Officer
Deloitte Consulting LLP
ckiddchubb@deloitte.com

Scott Rodgers
Chief Technology Officer
Deloitte Consulting LLP
srodgers@deloitte.com

Brent Smith
Senior Manager
Deloitte Consulting LLP
brentsmith9@deloitte.com

Thomas Hale (U.S.)
US Cloud Business Executive
Deloitte Consulting LLP
thhale@deloitte.com

Tyson Thedinger
US Lead Relationship Partner
Deloitte Consulting LLP
tthedinger@deloitte.com

David Nguyen
Senior Manager
Deloitte Consulting LLP
davidnguyen@deloitte.com

About Deloitte

Deloitte refers to one or more of Deloitte Touche Tohmatsu Limited, a UK private company limited by guarantee ("DTTL"), its network of member firms, and their related entities. DTTL and each of its member firms are legally separate and independent entities. DTTL (also referred to as "Deloitte Global") does not provide services to clients. In the United States, Deloitte refers to one or more of the US member firms of DTTL, their related entities that operate using the "Deloitte" name in the United States and their respective affiliates. Certain services may not be available to attest clients under the rules and regulations of public accounting. Please see www.deloitte.com/about to learn more about our global network of member firms.

This publication contains general information only and Deloitte is not, by means of this publication, rendering accounting, business, financial, investment, legal, tax, or other professional advice or services. This publication is not a substitute for such professional advice or services, nor should it be used as a basis for any decision or action that may affect your business. Before making any decision or taking any action that may affect your business, you should consult a qualified professional advisor. Deloitte shall not be responsible for any loss sustained by any person who relies on this publication.

Copyright © 2024 Deloitte Development LLC. All rights reserved.