

**Deloitte.**

## **Enterprise Data Management**

### **Data Factory as a Service (DFaS)**



# Data Factory as a Service (DFaS)

## What is DFaS?

DFaS offers a proven approach to deliver comprehensive services for end-to-end data conversion and cleansing capabilities for large SAP and Oracle ERP Implementations.

### Services

- Assessment of data in source systems
- Data quality risk assessment
- Development of data cleansing and data conversion approach
- Technical design of data conversion programs that extract, transform and load data to target system
- Management and execution of data conversion
- Proven delivery model leveraging mature Off-shore practice
- Hosting options for ETL/DQ software
- Services scale from short data assessment to large scale E2E data conversion projects

### Key benefits

- Reduce the risk associated with data conversion
- Reduce the time required to develop and test data conversion programs
- Leveraging industry leading ETL/DQ software to build repeatable programs
- Avoid complex legacy code for data extraction and cleansing
- Automate data cleansing tasks like de-duplication and address validation/cleansing
- Minimize time-consuming and data cleansing activities
- Approach closely aligned with EVD methodology
- Can be hosted by Deloitte

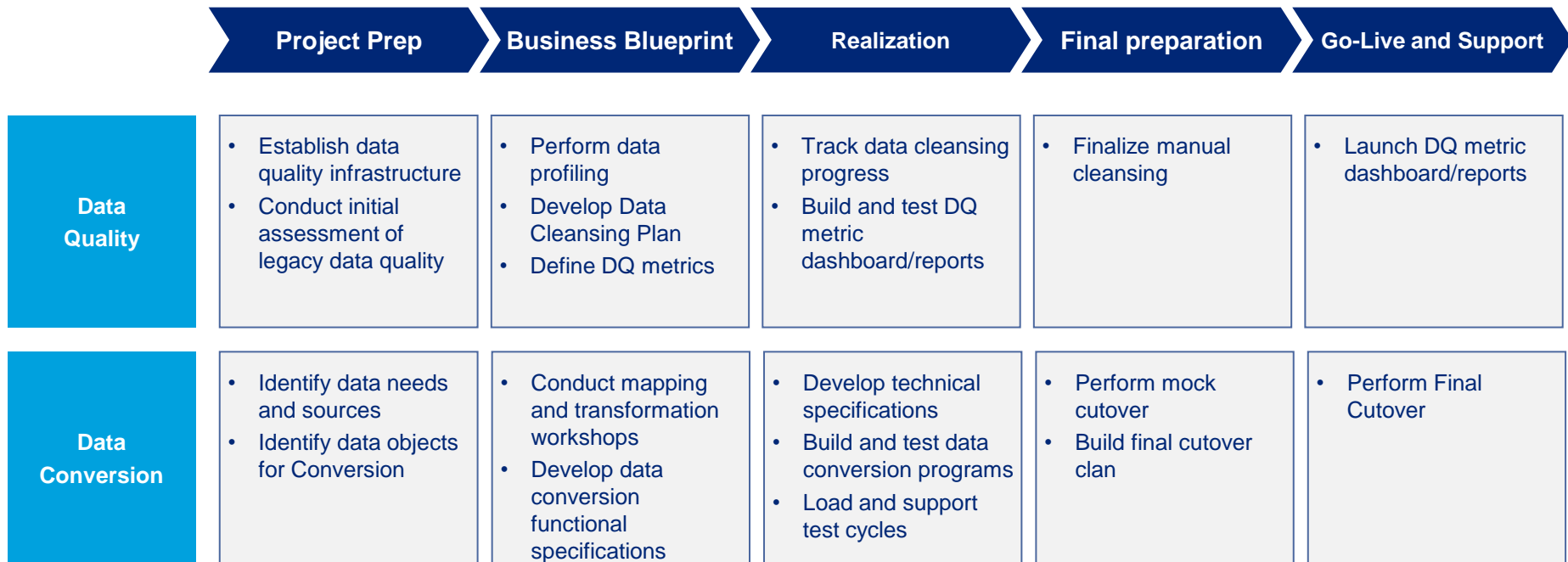
### Accelerators

- Library of pre-built data conversion programs for 40+ common data objects
- 100's of pre-built validation and DQ rules
- Templates for data conversion technical specifications
- Comprehensive estimation tool
- Pre-defined data conversion architecture
- Templates for formal data validation and re-conciliation
- Full audit trail
- Progress tracking dashboards
- Data conversion execution plans with data object dependencies

# DFaS Services

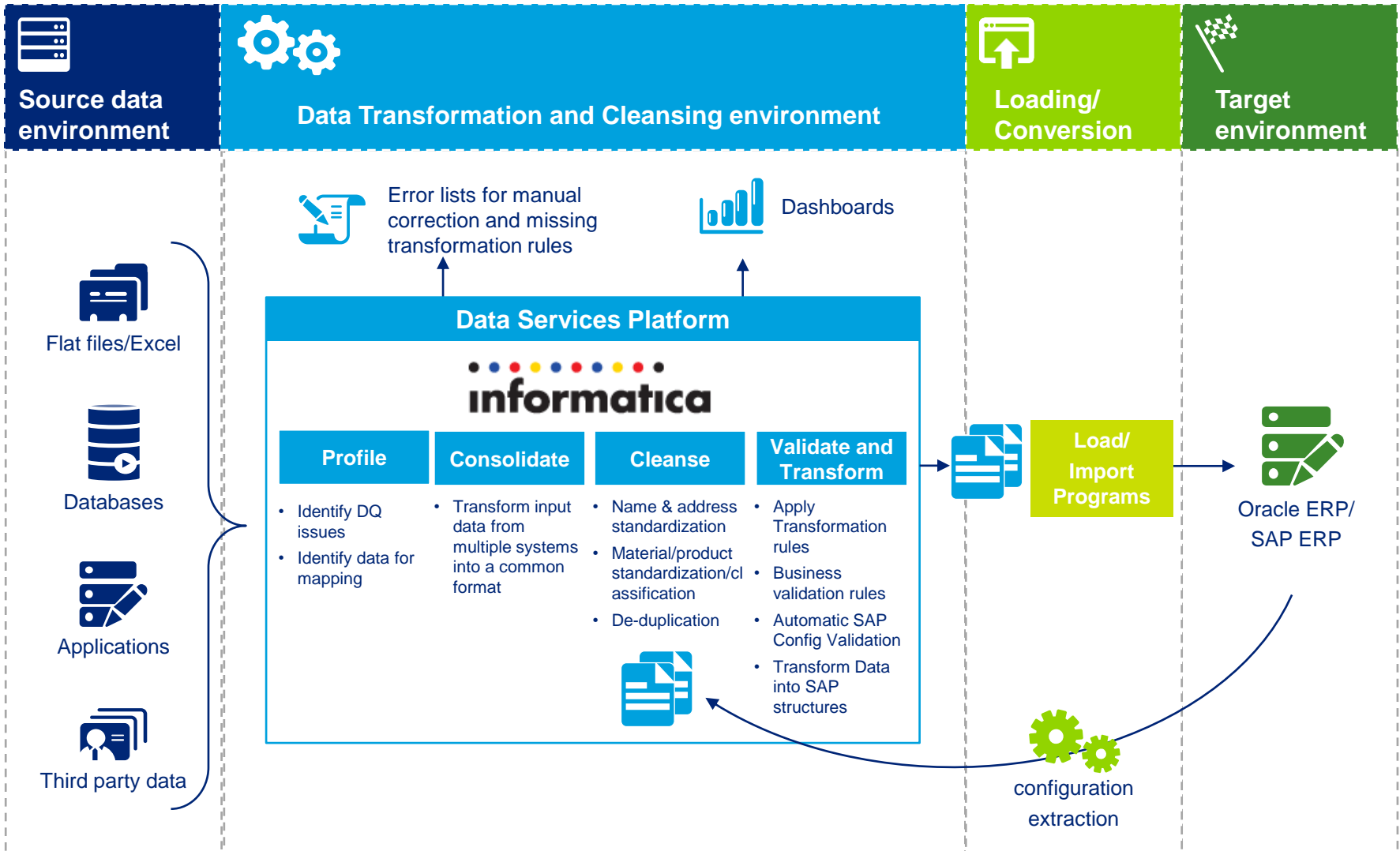
The DFaS activities are organized in the phases of EVD and run as a track along the entire project life-cycle.

Functional teams write functional specifications which are handed over to the data conversion team.



# DFaS for SAP Architecture

Based on multiple successful data conversion and cleansing implementations a robust architecture have been defined based on SAP's BO Data Services Platform.

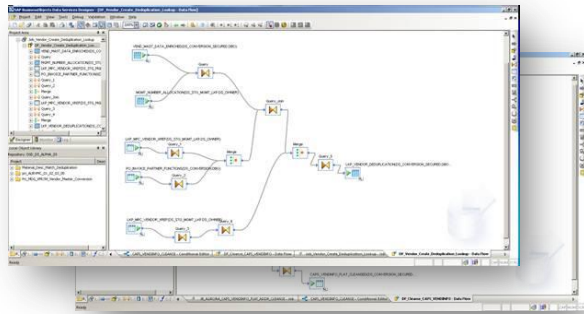


# DFaS – Key Accelerators

Through many successful data conversion projects, Deloitte has built and refined multiple accelerators

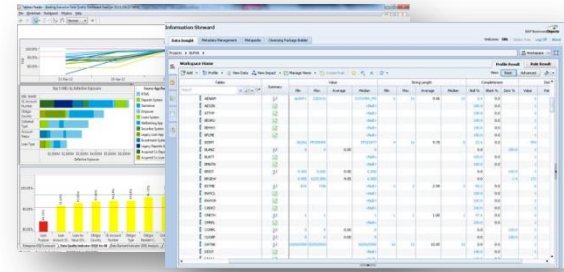
## Library of pre-built data conversion programs

- Library of pre-built data conversion programs



## Pre-defined business rules

- 100's of pre-defined business rules which data can be validated against as part of data assessment and transformation



## Plans and trackers

- Progress tracking dashboards
- Data conversion execution plans with data object dependencies

FRICWID	Object	Overall Status	Extract			Validate Extract			Transform		
			Status	Team	Target	Status	Team	Target	Status	Team	Target
CNV024	Work order	In Progress	Complete	AUR	10/27	Complete	FR	10/28	Complete	AUR	
CNV024	Work order	In Progress	Complete	AUR	10/27	Complete	FR	10/28	Complete	AUR	
CNV024	Work order	Not Started	Not Started	AUR	11/1	Not Started	FR	11/1	Not Started	AUR	
CNV026	Long Text	Not Started	Not Started	AUR	10/27	Not Started	FR	10/29	Not Started	AUR	
CNV026	Long Text	Not Started	Not Started	AUR	10/27	Not Started	FR	10/29	Not Started	AUR	
CNV026	Long Text	Not Started	Not Started	AUR	11/1	Not Started	FR	11/1	Not Started	AUR	
PTPRC035	Open Purchase Requisitions	In Progress	Complete	AUR	10/27	Complete	PTP	10/28	Not Started	AUR	
PTPRC034	Open Purchase Orders	In Progress	Complete	AUR	10/27	Complete	PTP	10/28	Not Started	AUR	
PTPRC036	Visision Purchase Orders	In Progress	Complete	AUR	10/27	In Progress	PTP	10/28	Not Started	AUR	
PTPAPC002	Open Invoices and Credit Memo	Not Started	Not Started	AUR	11/1	Not Started	PTP	11/1	Not Started	AUR	
FINARC002	AR Open Items	Not Started	Not Started	AUR	11/1	Not Started	FIN	11/1	Not Started	AUR	
PTPIMC003	Conversion Inventory Balances	In Progress	Complete	AUR	10/27	In Progress	PTP	10/28	Not Started	AUR	
CNV030	Inventory Balances M/W/M Mov	In Progress	Complete	AUR	10/27	In Progress	FR	10/28	Not Started	AUR	

## Estimation tool

- Deloitte's Project Estimator tool provides accurate and detailed estimates for data conversion efforts

	Material	Vendor	Services	Contracts	Catalogs	Purchase Req
<b>Master Data Required Cleansing Stats</b>	250,000	450,000	50,000	50,000	1,000,000	800,000
No of total records	250,000	450,000	50,000	50,000	1,000,000	800,000
No of duplicate records to be removed	50,000	68,000	10,000	0	200,000	0
No of records to be manually cleaned	20,000	28,000	0,000	0	100,000	0
No of records to clean (auto and manual)	175,000	343,000	35,000	50,000	700,000	360,000
<b>Manual Cleansing Effort for Master Data</b>						
% target cleans level	75%	80%	70%	70%	70%	
% of records cleansed by auto rules	50%	70%	10%	80%	80%	
% records to be manually cleaned	80%	20%	80%	10%	10%	
No of records to clean manually	140,000	68,600	28,000	5,000	70,000	
<b>Effort to Manually Clean/ Enrich Data</b>						
Standardize & Cleanse - No of minutes per record	2	2	2	2	2	
Enrich - No of minutes per record	0.033	0.033	0.033	0	0.033	
Cleanse and Enrich - No of minutes per record	2	2	2	2	2	
Enrich - No of records per hour	0.033	0.033	0.067	0.067	0.067	
Cleanse and Enrich - No of records per record	0	0	0	0	0	
Cleanse and Enrich - Total No of hours per record	0.067	0.067	0.100	0.100	0.067	
Cleanse - No of person hours	4,667	2,287	933	197	0	
Enrich - No of person hours	4,667	2,287	1,887	333	4,667	
Cleanse and Enrich - No of person hours	9,333	4,573	2,800	500	4,667	
% full time resources	100%	100%	100%	100%	100%	
Cleanse and Enrich - No of full time person hour	9,333	4,573	2,800	500	4,667	