

HEALTHMAP: MANAGING DATA OUTCOMES IN A STATE HEALTHCARE ENVIRONMENT

Promote Better Care, Improve Health, and Reduce Costs

The amount of data available for analysis is expanding rapidly in healthcare, but it seems the more data that is available, the less people can use it. Even when reporting tools are available, there may be limits for extracting records, features that are too complex for daily users, and varying results based on how users analyze the data.

EMPOWERING TIMELY AND SECURE ACCESS TO INFORMATION

Enabling organizations to make data-driven decisions and propelling you toward analytic maturity is the foundation of our innovative, industry-leading HealthMAP solution engineered with Snowflake and delivered by Deloitte.

HealthMAP is a flexible and secure analytics platform that aggregates your complex and diverse data sets to deliver cutting-edge analytics across crucial dimensions of healthcare. Together, Snowflake and Deloitte bring a first-of-its-kind, cloud-based, software-as-a-service (SaaS) model with a configurable, COTS-based solution. It supports required federal and state reporting such as T-MSIS as well as predictive analytics, population health, and health equity analysis using social determinants of health (SDoH) data.

HealthMAP provides your users access via a centralized, analytic portal based on persona-centric design and features a user-defined data enrichment framework. It incorporates security features to enhance alerting and incident response as well as active monitoring for cyber threats. And it's CMS certifiable.

HealthMAP currently supports Medicaid and health analytics programs in five states.

Common challenges addressed include the following:

- **Siloed data sources**
- **Lack of business intelligence tools**
- **Disconnected data models that prevented accurate, holistic reporting across Medicaid and HHS programs**
- **Lack of a single source of truth**

At state HHS agencies where HealthMAP has replaced IT-managed/on-premises data warehouses, HealthMAP with Snowflake has increased operational efficiency by more than 100%, driven down DW hosting costs, and streamlined development operations processes.



FRAMEWORK FOR THE FUTURE

Cloud-native information architecture that is scalable, elastic, and future-ready



INCREASED EFFICIENCY

Real-time capture and delivery of information to business users



ENGINEERED INTELLIGENCE

Builds upon persona-centric data that supports daily operational needs as well as advanced analytical needs



DATA STANDARDS

Integrated data quality framework to drive continued improvement of secure data quality



COLLABORATION

Share governed data internally and with external partners instantly, securely, and without the need to move data



DATA ENRICHMENT

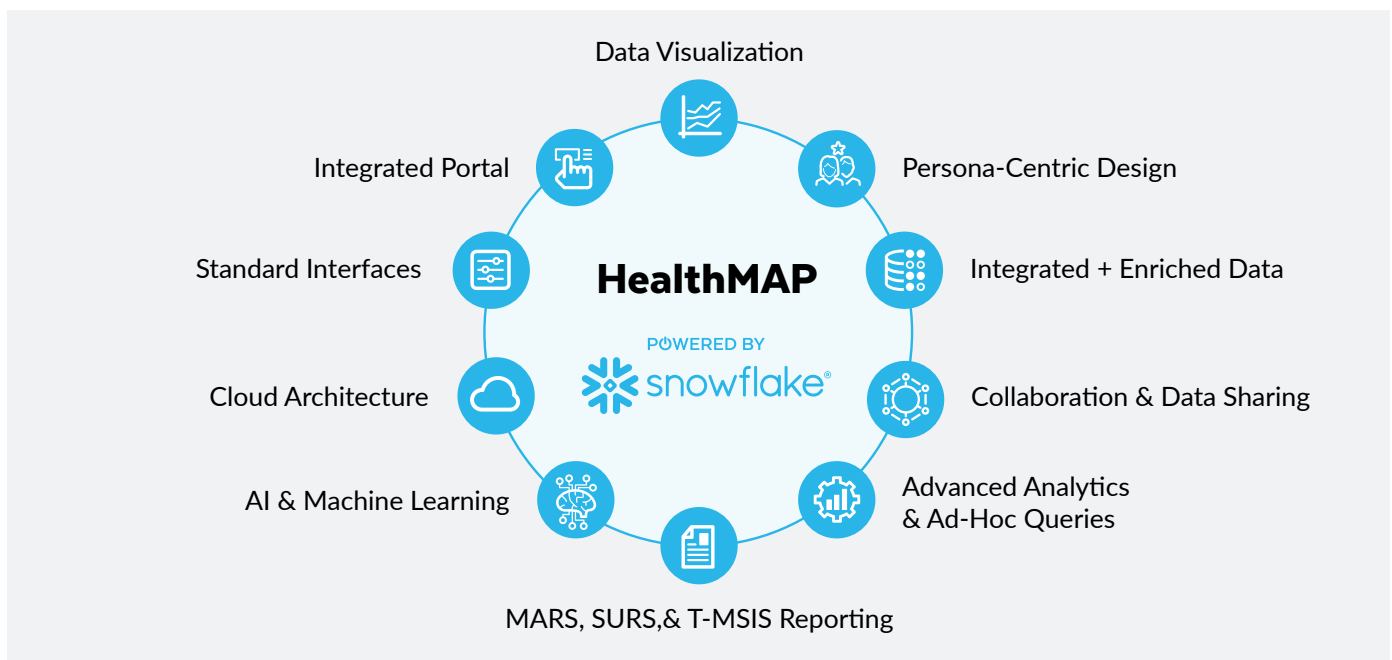
Configurable data processing services to cleanse, enrich, consolidate, transform, and integrate data for analytics

ESTABLISH AN INNOVATIVE, OUTCOME-BASED OPERATING MODEL

HealthMAP empowers state healthcare to improve performance outcomes across programs and populations:

- Determines potential issues with spending, access to care, disease burden, and health equity
- Uncovers potential sources of fraud, waste, and abuse
- Generates comparative performance analytics for MCOs, programs, providers, and vendors
- Assesses potential impacts of incentive programs and interventions
- Provides foresight on enrollment, spend, and member acuity/risk through predictive analytics
- Fosters collaboration with partner agencies, MCOs, the federal government and other entities

HealthMAP builds on a persona-centric model to meet the needs of a broad group of business users—from data viewers to data scientists. It goes far beyond standard reports and static dashboards to provide states with real insights into program effectiveness. It can augment and enhance existing data to encourage innovative analytics that support creative problem solving.



Deloitte's CMS Certified HealthMAP solution is helping a western state drive transformative change in healthcare by promoting better Medicaid program management and patient-centric care for its citizens. This comprehensive platform includes a data lake and a reporting solution built to meet the challenges of the modern Medicaid environment. It leverages data and predictive analytics to identify care management requirements, improve patient outcomes, streamline operations, enhance decision-making, and empower the state to meet federal reporting requirements.

ABOUT SNOWFLAKE

Snowflake enables every organization to mobilize their data with Snowflake's Data Cloud. Customers use the Data Cloud to unite siloed data, discover and securely share data, power data applications, and execute diverse AI/ML and analytic workloads. Wherever data or users live, Snowflake delivers a single data experience that spans multiple clouds and geographies. Thousands of customers across many industries, including 590 of the 2022 Forbes Global 2000 (G2K) as of April 30, 2023, use Snowflake Data Cloud to power their businesses.

Learn more at snowflake.com

ABOUT DELOITTE

Deloitte Government & Public Services is committed to improving public outcomes through a focus on people. Deloitte provides agencies with fresh perspectives that help them to anticipate disruption, reimagine the possible, and fulfill their mission objectives, and they develop relevant, timely, and sustainable solutions. Learn more at deloitte.com/us/government