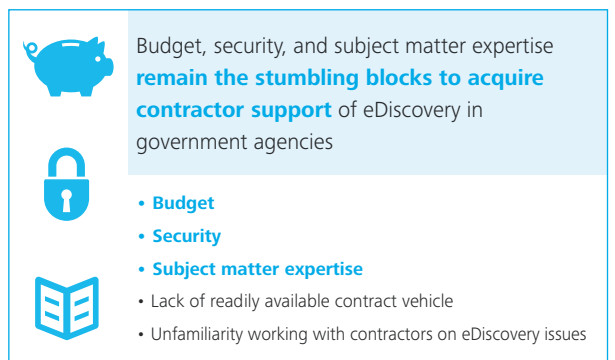
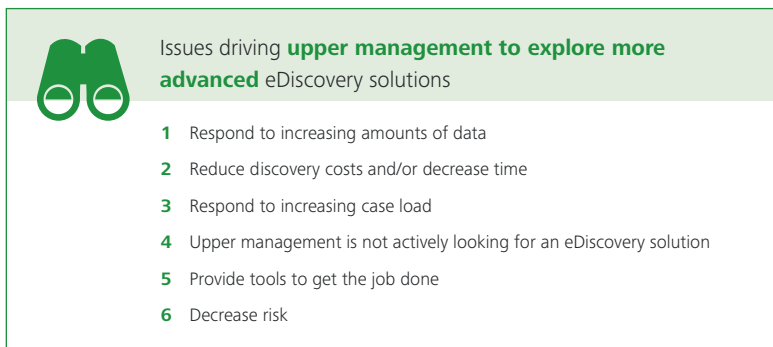
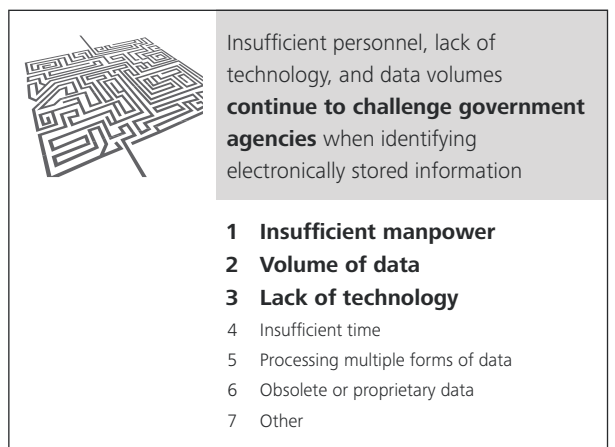
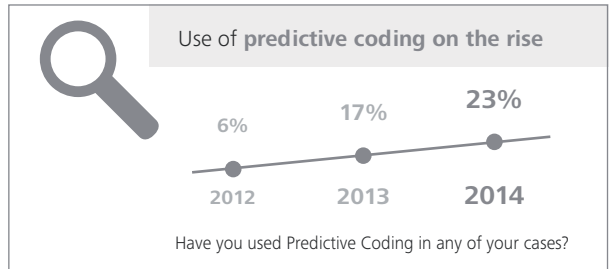
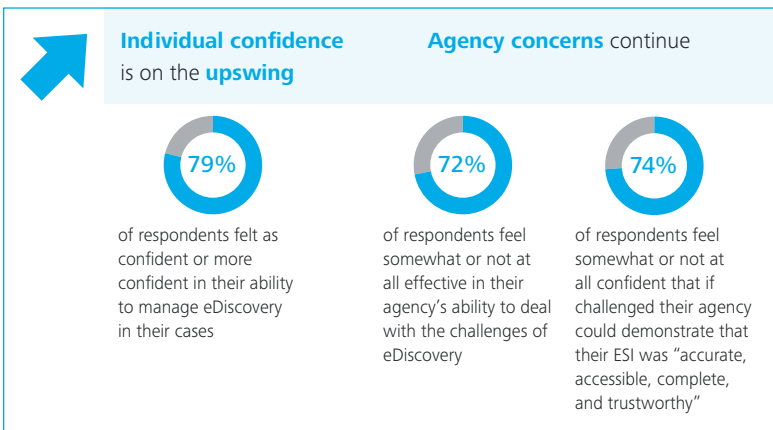
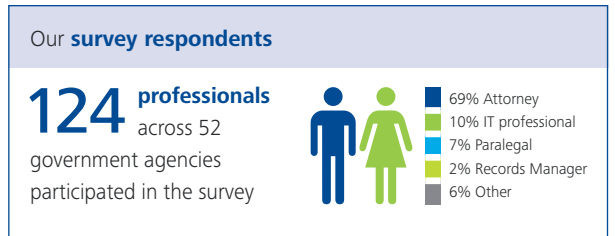
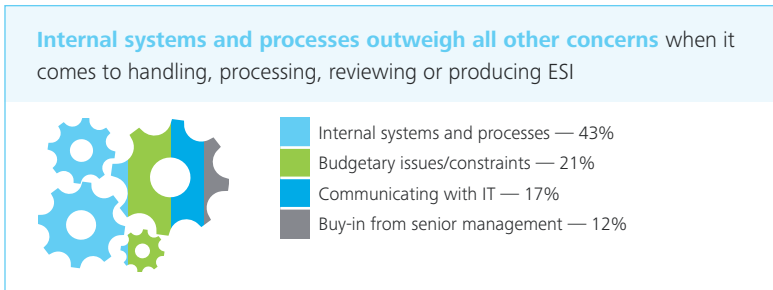


Eighth Annual Benchmarking Study of Electronic Discovery Practices for Government Agencies

Internal eDiscovery systems and processes continue to challenge government agencies. For the third year in a row, government agencies have indicated that their biggest hurdle with regard to handling, processing, reviewing or producing electronically stored information (ESI) is their own internal systems and processes. This year, 43% of respondents indicated it was their toughest challenge — up 17% from last year. Agencies must institute effective practices for people, process and tools for efficient and cost-effective eDiscovery.



As used in this document, "Deloitte" means Deloitte Transactions and Business Analytics LLP, an affiliate of Deloitte Financial Advisory Services LLP. Deloitte Transactions and Business Analytics LLP is not a certified public accounting firm. Please see www.deloitte.com/us/about for a detailed description of the legal structure of Deloitte LLP and its subsidiaries. Certain services may not be available to attest clients under the rules and regulations of public accounting.