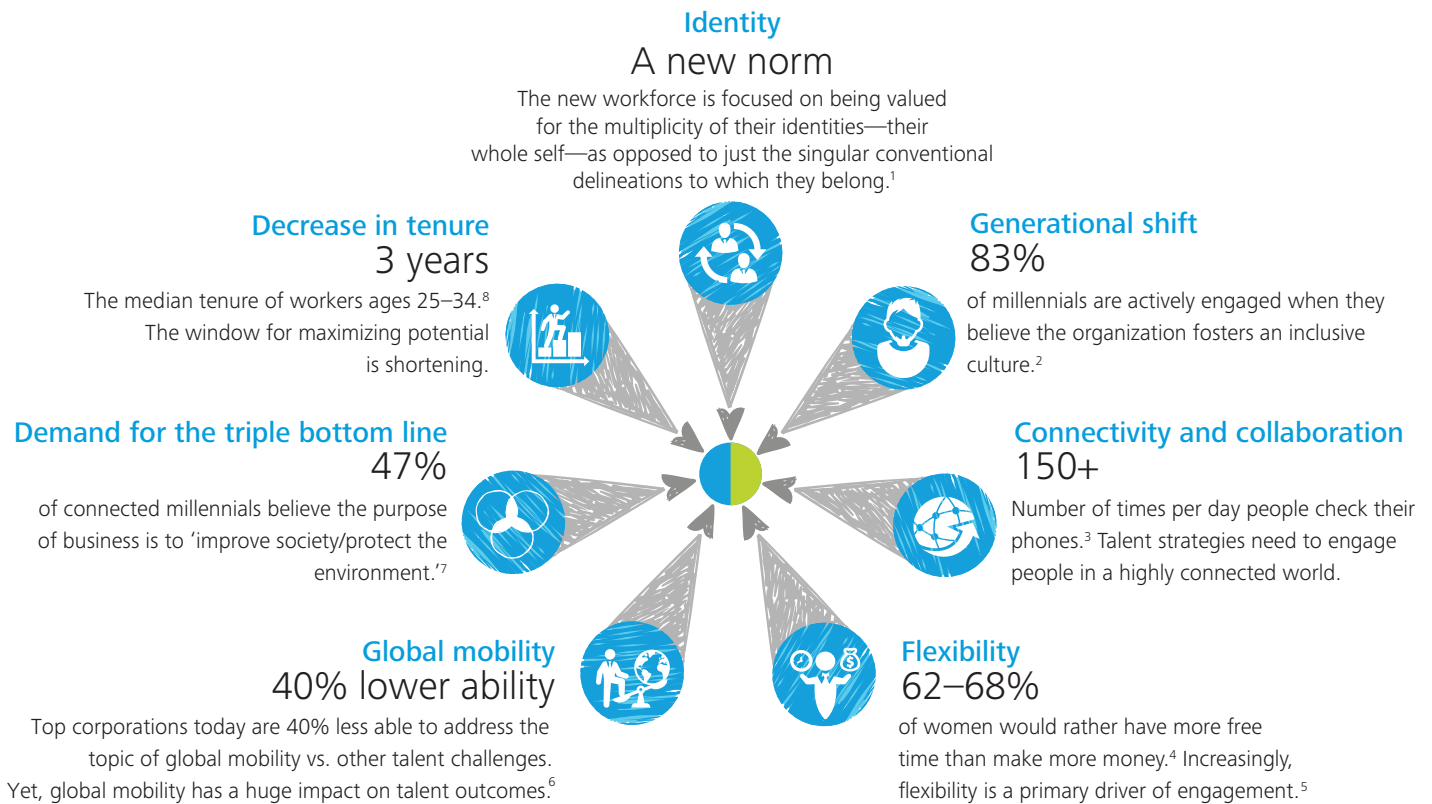


Unleashing human potential



The talent landscape has transformed. It demands a values-centered approach to unleashing human potential and driving business results.



"Leaders will have to be more than the 'change agents' we often ask or describe them to be—they will have to become transformational activists in tireless pursuit of human flourishing." — **Christie Smith**

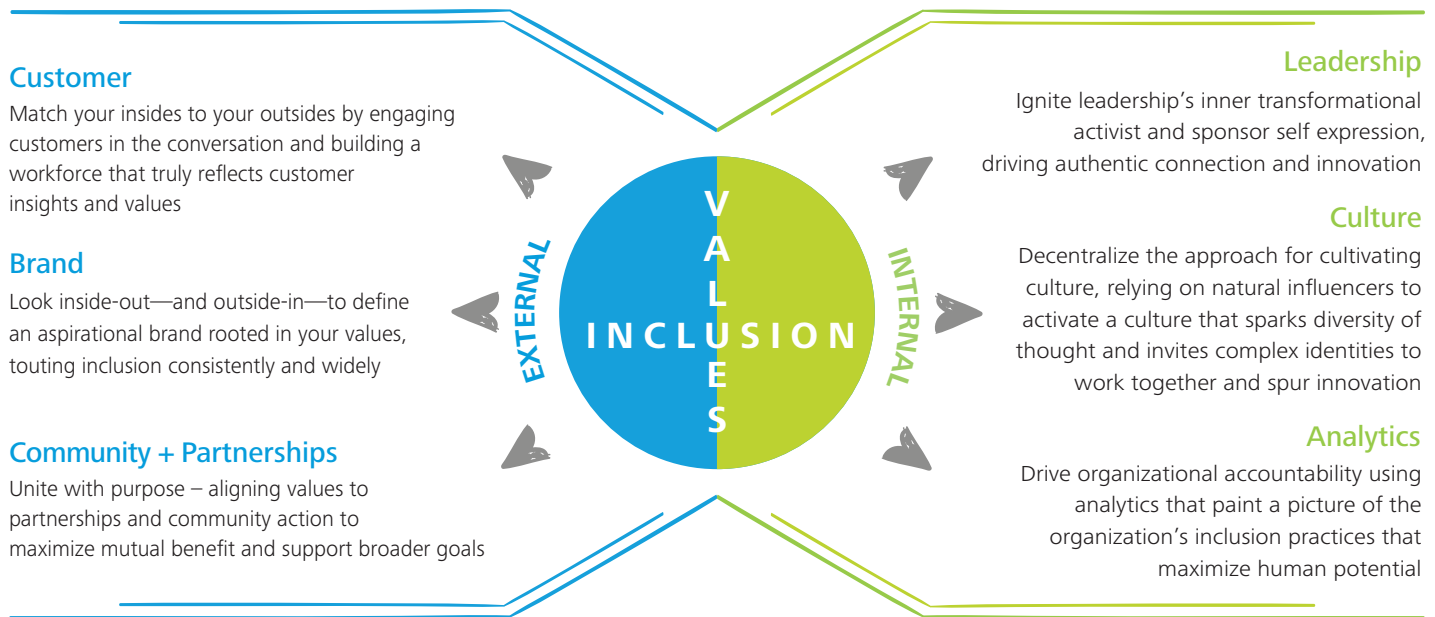
Managing Principal, Deloitte University Leadership Center for Inclusion, Deloitte Consulting LLP

¹Deloitte University Press, "What if the road to inclusion were really an intersection?" 2015
²Deloitte University Leadership Center for Inclusion, "The Radical Transformation of Diversity & Inclusion: The Millennial Influence" 2015
³Deloitte, "Global Human Capital Trends, 2015" 2015
⁴Deloitte, "Workplaces of the Future: Creating Elastic Workplaces" 2013

⁵Bersin by Deloitte, "The Five Elements of a 'Simply Irresistible' Organization" 2014
⁶Deloitte, "Global Human Capital Trends, 2014" 2014
⁷Deloitte, "The 2015 Deloitte Millennial Survey" 2015
⁸Bureau of Labor Statistics, "Employee Tenure in 2014" 2014

A strategic model to unleash human potential

$$f \left(\begin{matrix} \text{Culture} \\ \text{Brand} \end{matrix} \right) + \text{sum} \left(\begin{matrix} \text{Diversity, Inclusion,} \\ \text{Principles \& Values} \end{matrix} \right) = \text{Unleashing Human Potential}$$



Deloitte offers strategic guidance across six activators—all at the intersection of values and inclusion.



About Deloitte

As used in this document, "Deloitte" means Deloitte Consulting LLP, a subsidiary of Deloitte LLP. Please see <http://www.deloitte.com/us/about> for a detailed description of the legal structure of Deloitte LLP and its subsidiaries. Certain services may not be available to attest clients under the rules and regulations of public accounting.