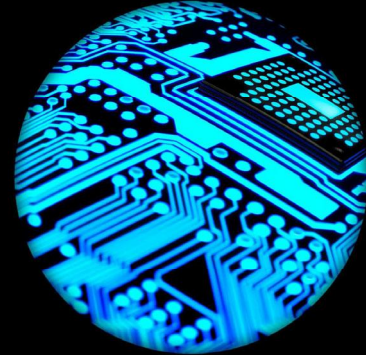


Human Capital Application Management Services

Sustain, optimize, innovate,
and extend to work smarter
and achieve more.



Manage and maximize your organization's technology investment with Human Capital Application Management Services (AMS).

Today's human capital and technology leaders are investing heavily to bring a world-class digital experience to their employees.

- Are you being asked to manage risk and show **continuous value** for your software investment?
- Is your organization able to optimize and keep pace with the **adoption of new features** and functionality, while maintaining the needs of the business?
- Are you innovating to meet ongoing business needs and make your cloud solution a **business enabler**?

Work Smarter. Achieve More.



Sustain your value: Manage operational risk and maintain your systems with certified experts. Mitigate service delivery risks with a flexible solution that adapts to your changing needs.



Optimize your tech: Maximize the value of your systems with advisory and delivery support; track realized benefits as part of service delivery and take advantage of the latest tools/features with advisors that understand how new releases can support your organization



Innovate your business: Sense and anticipate future trends while using systems insights to future proof your HR technology. Evolve for the future by partnering on roadmap planning and execution.



Extend your solution: Supplement with capabilities and solutions to meet your needs and increase value to the organization.

11+ years partnering with Workday

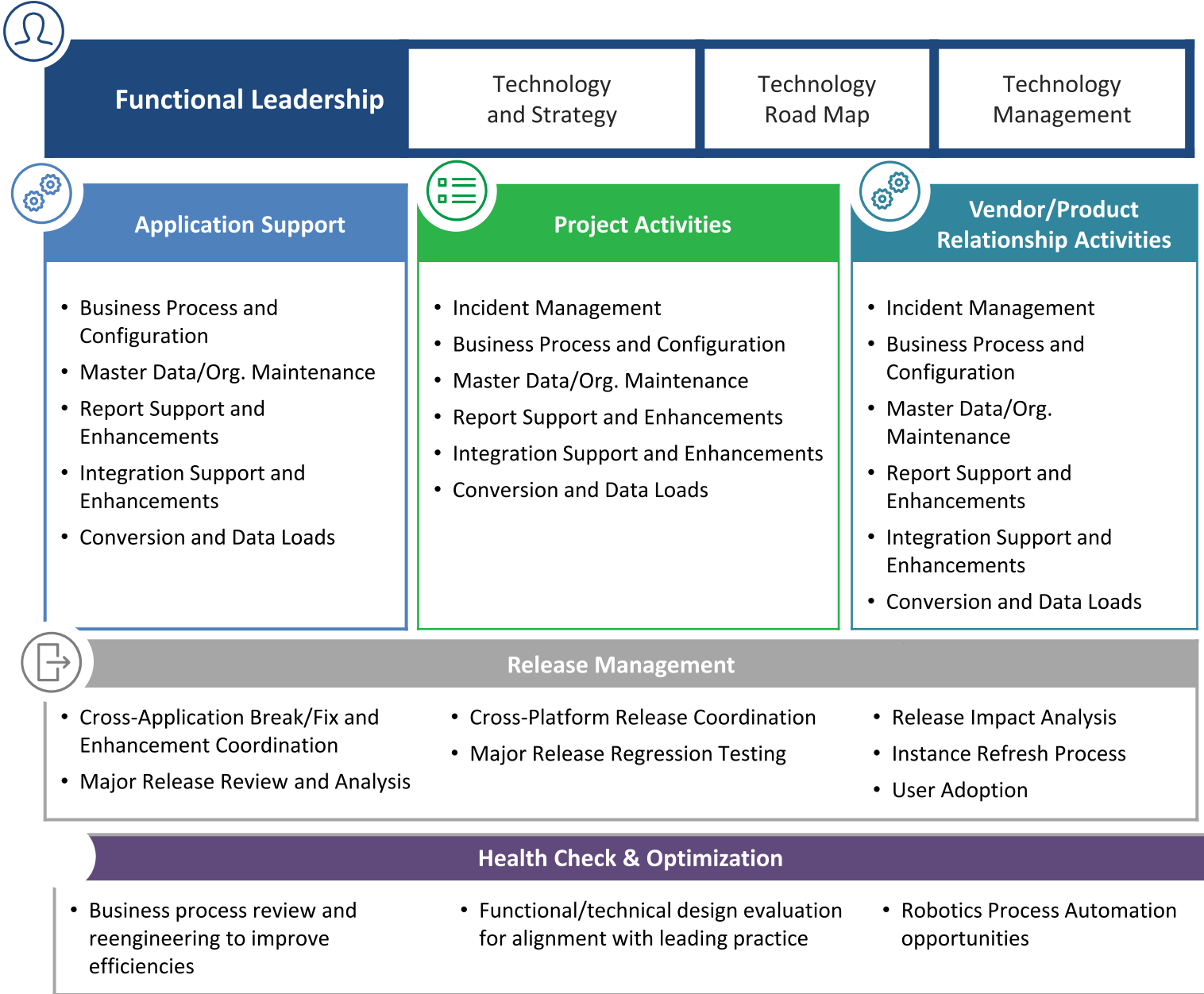


1,700+
**Workday Practitioners
Globally**

350+
**Successful
Implementations**



Human Capital Application Management Services



Marty Marchetti
 Managing Director
 Human Capital Application Management Services
 Deloitte Consulting LLP
mamarchetti@deloitte.com



Todd Amsley
 Managing Director
 Human Capital Application Management Services
 Deloitte Consulting LLP
tamsley@deloitte.com

As used in this document, "Deloitte" means Deloitte Consulting LLP, a subsidiary of Deloitte LLP. Please see www.deloitte.com/us/about for a detailed description of the legal structure of Deloitte LLP and its subsidiaries. Certain services may not be available to attest clients under the rules and regulations of public accounting.

This communication contains general information only, and none of Deloitte Touche Tohmatsu Limited, its member firms, or their related entities (collectively, the "Deloitte Network") is, by means of this communication, rendering professional advice or services. Before making any decision or taking any action that may affect your finances or your business, you should consult a qualified professional adviser. No entity in the Deloitte Network shall be responsible for any loss whatsoever sustained by any person who relies on this communication.