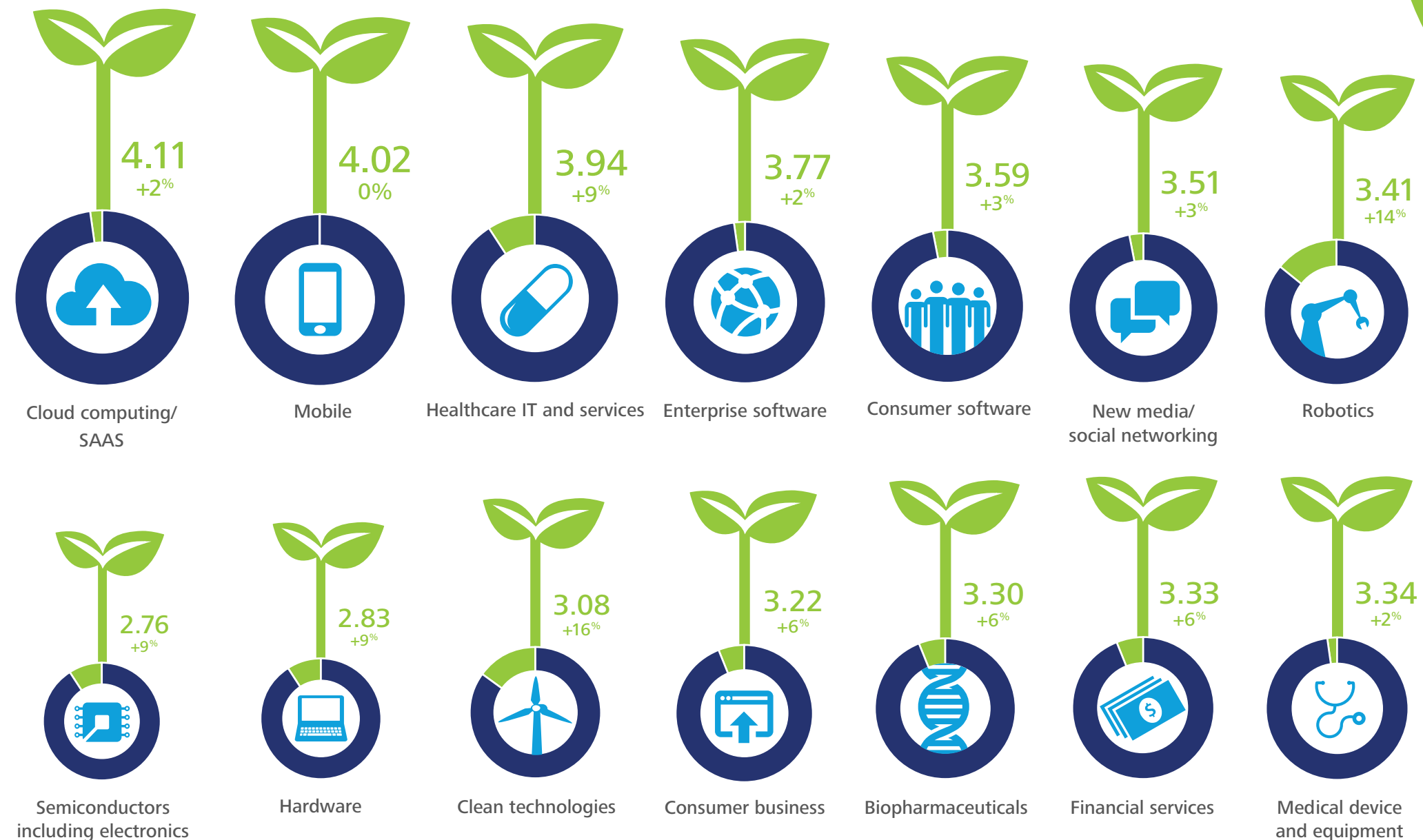


2014 Global Venture Capital Confidence Survey Results

Investors were asked to rate their **confidence level in each industry sector**. Confidence levels were measured on a scale of 1-to-5, with a 5 representing the most confidence. Percentage figures indicate year-over-year changes.

About survey
214 venture capital investors were surveyed from May to June 2014 representing 20 venture capital associations throughout North and South America, Africa, Europe, and Asia Pacific.

www.deloitte.com/us/2014vcsurvey



About Deloitte
Deloitte refers to one or more of Deloitte Touche Tohmatsu Limited, a UK private company limited by guarantee ("DTTL"), its network of member firms, and their related entities. DTTL and each of its member firms are legally separate and independent entities. DTTL (also referred to as "Deloitte Global") does not provide services to clients. Please see www.deloitte.com/about for a detailed description of DTTL and its member firms. Please see www.deloitte.com/us/about for a detailed description of the legal structure of Deloitte LLP and its subsidiaries. Certain services may not be available to attest clients under the rules and regulations of public accounting.

