



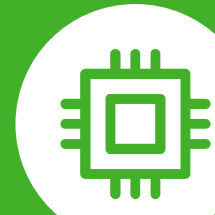
Driving the digital age

Scaling digital programs through effective risk management

With the acceleration and proliferation of digital technologies such as Robotic Process Automation (RPA) and Artificial Intelligence (AI), the road ahead holds vast opportunities for organizations. As humans and machines collaborate to drive strategic outcomes, are management and Internal Audit (IA) equipped and positioned to navigate the new risk terrain of this evolving technology landscape to help ensure that their stakeholders are maximizing the value from these capabilities while effectively managing risk?

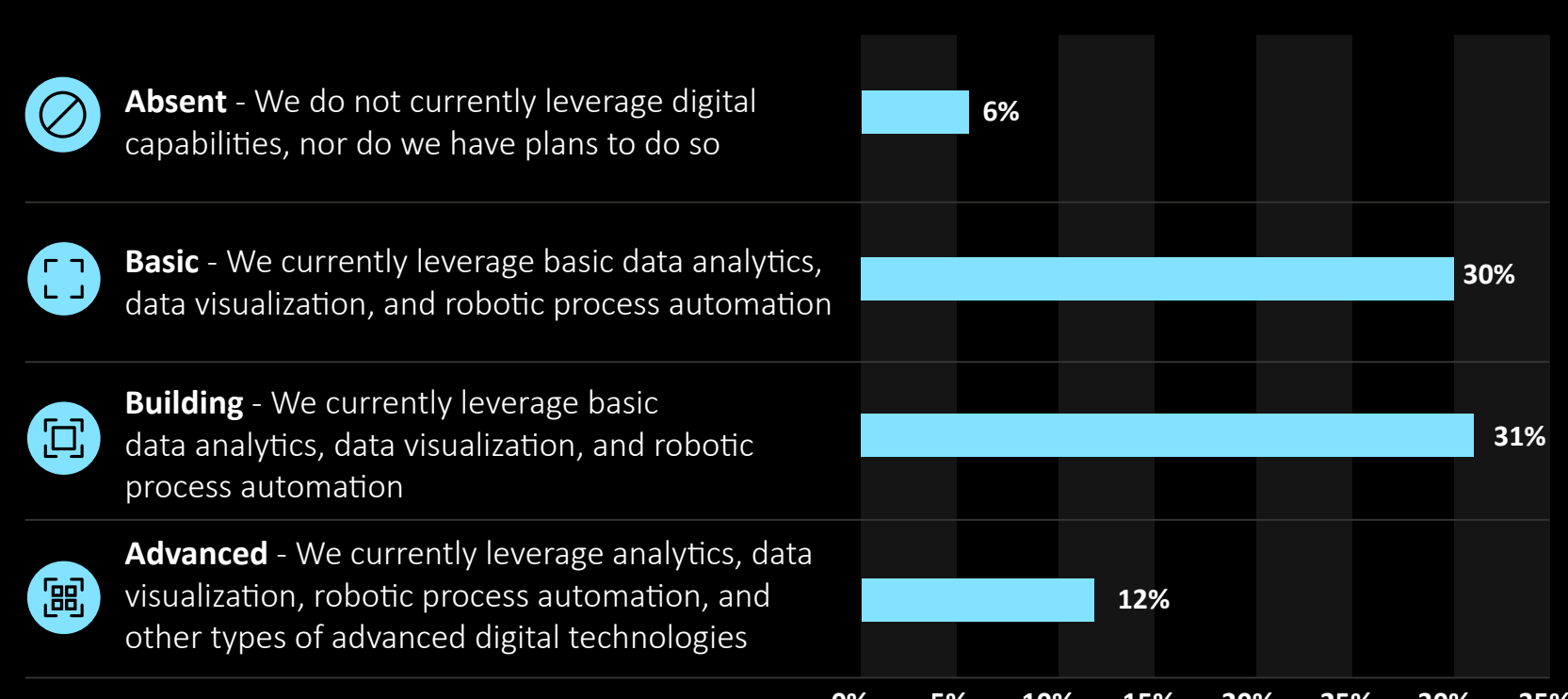
In a recent Deloitte survey¹, 83% of executives said AI will be very or critically important to their business success in the next two years, and 95% said they have concerns around ethical risks arising due to AI. As AI proliferates, organizations must work toward AI that delivers on transparency, privacy, and impartiality.

Source: Dbriefs, "AI risk and rewards: Striking the right balance for your organization" (Sept. 30, 2020)



During a November 2020 **Dbriefs webcast**, Deloitte discussed an overview of emerging technologies and effective risk management techniques for digital transformations, specific risks associated with metrics involved in external reporting and internal monitoring, and Trustworthy AI™. During this webcast, Deloitte also surveyed nearly 3,000 professionals about the extent of their organizations' digital transformation, IA's level of involvement, their greatest challenges in auditing advanced digital capabilities, and their approaches to ethical concerns surrounding AI. Here's what they had to say.

How would you describe your organization's adoption and leverage of digital capabilities (e.g., analytics, machine learning, robotic process automation)?



*Note: 21% of respondents answered "don't know/not applicable"

The majority of respondents, nearly 75%, report that their organizations have begun to take advantage of the opportunities presented by digital technologies, though significant diversity exists in the organizations' levels of advancement. Wherever your organization falls in the process of digital transformation, effective end-to-end governance of these technologies remains critical. Building bots is only the start; true value and impact derive from defining the right operating model and effectively managing the process, operations, employees, and risk tied to the automation.

As more organizations move from absent or basic toward advanced, IA should play a key role, not only to reactively monitor gauges and warning lights but to proactively help chart the course ahead.

Does your organization's internal audit team audit the risks associated with the use of advanced digital capabilities (e.g., machine learning, robotic process automation)?



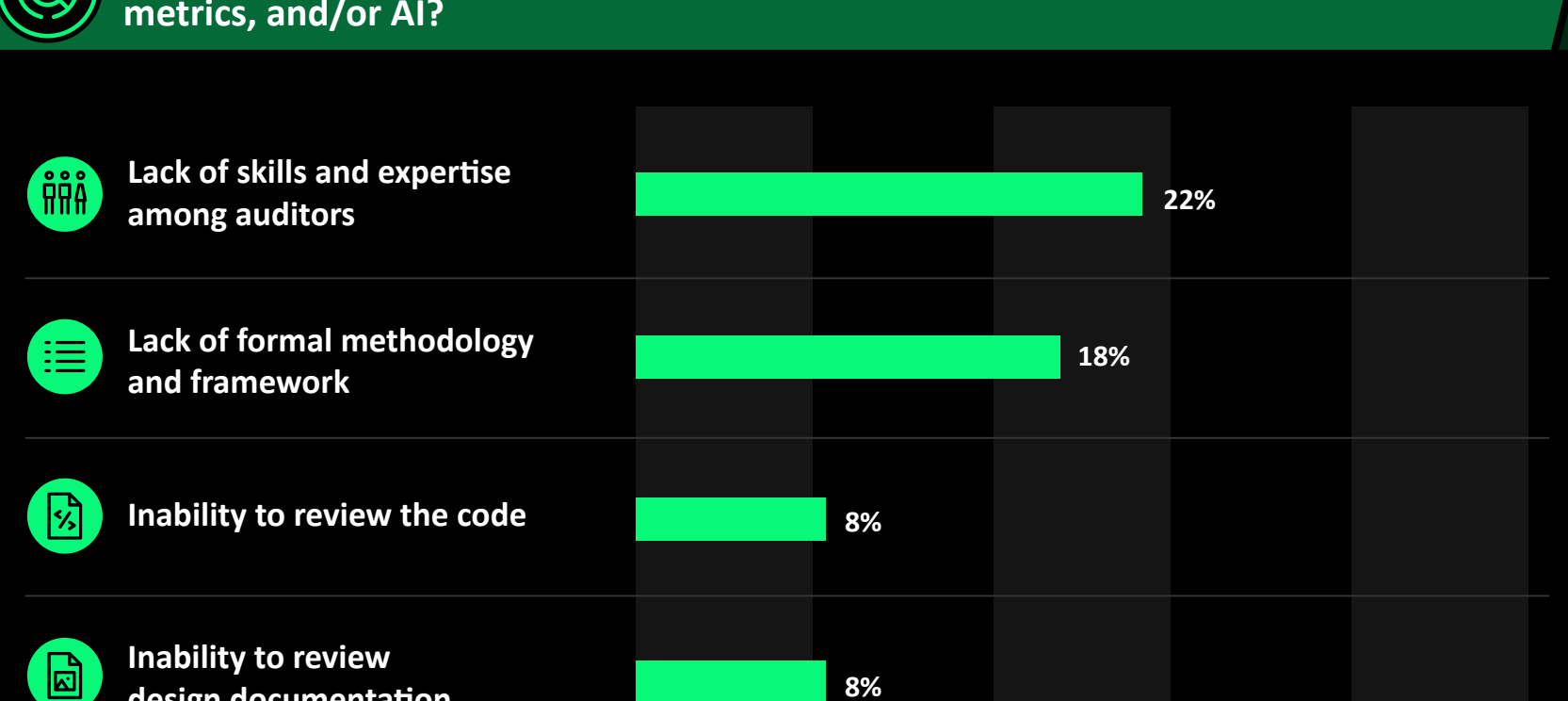
Note: 44% of respondents answered "don't know/not applicable"

With the growth of digital investment, an opportunity exists for many organizations to develop a forward-looking framework rather than a rearview-mirror approach to digital risks, taking command of their risk management and remaining strategically positioned along with the 23% who already audit these risks.

When building that framework, people typically think of IT risk, but should think more broadly and address all major areas where risks occur:

- Automation strategy and governance: Guiding principles, expected ROI, management engagement, and monitoring
- Digital operating model: Opportunity identification, prioritization, development, and deployment
- Business unit: Impact of automation on current operations and roles/responsibilities

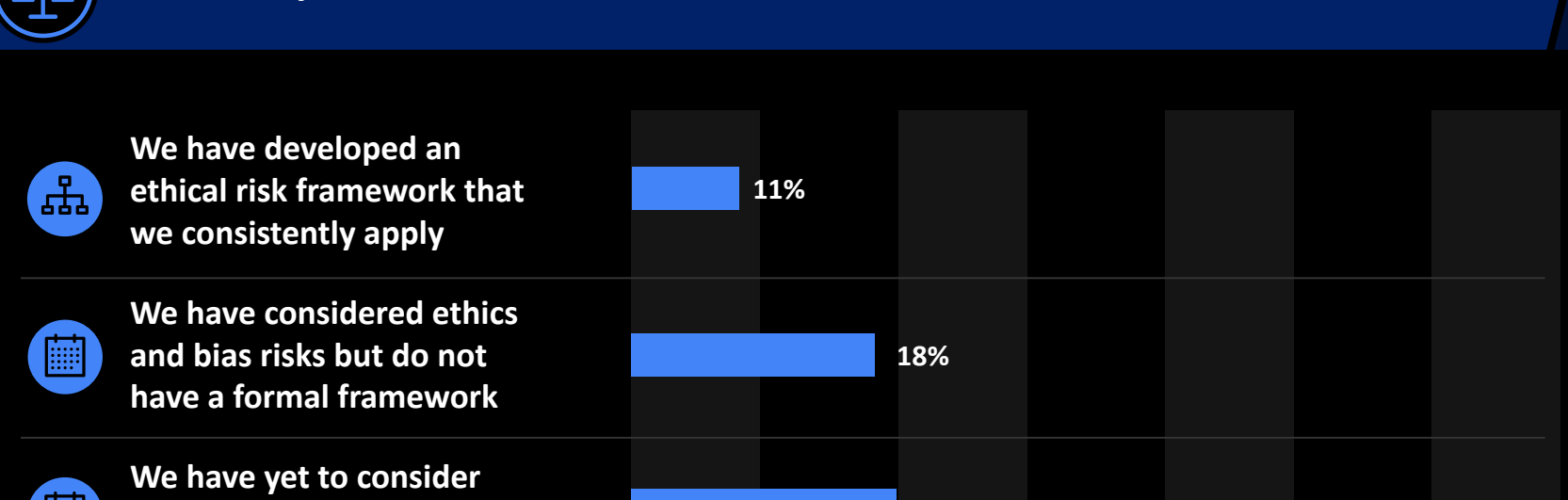
What is your organization's biggest challenge while auditing automation, metrics, and/or AI?



Note: 44% of respondents answered "don't know/not applicable"

A lack of skills and expertise among auditors and lack of a formal audit methodology framework emerge as the greatest challenges organizations face when auditing advanced digital capabilities. Both relate to the question: how do you help your business users who may not be tech-aware better understand the technology so they can work hand in hand to drive digital transformation? By focusing on building awareness and education and providing end users with the required skillsets, organizations can elevate digital fluency and give auditors and decision-makers the tools they need.

How have you considered ethical and bias risks associated with AI?



Note: 51% of respondents answered "don't know/not applicable"

With only 11% of respondents formally addressing ethics and bias concerns, a large opportunity exists to capture the benefits of trustworthy AI, including improved decision-making, reduced legal costs, and increased brand equity.

Neil White
Digital IA Lead Principal
Deloitte & Touche LLP
nwhite@deloitte.com

Geoffrey A. Kovesdy
Digital IA Principal
Deloitte & Touche LLP
gkovesdy@deloitte.com

Michael Schor
Lead IA Innovation Partner
Deloitte & Touche LLP
mschor@deloitte.com

Alexey Surkov
Trustworthy AI Partner
Deloitte & Touche LLP
asurkov@deloitte.com

Michael Koppelman
Senior Manager
Deloitte & Touche LLP
mkoppelman@deloitte.com

Martin Rogulja
Senior Manager
Deloitte & Touche LLP
mrogulja@deloitte.com

Michelle Pham
Senior Manager
Deloitte & Touche LLP
mipham@deloitte.com

Ryan Hittner
Trustworthy AI Managing Director
Deloitte & Touche LLP
rhittner@deloitte.com

■ Internal Audit ■ Ethical AI ■ Digital Program Assurance ■ Metrics Risk

As your company accelerates its digital transformation, allow Internal Audit to help drive value through effective risk management. Visit our website or contact your Deloitte professional to discuss more on elevating your Internal Audit function.



About Deloitte

This publication contains general information only and Deloitte is not, by means of this publication, rendering accounting, business, financial, investment, legal, tax, or other professional advice or services. This publication is not a substitute for such professional advice or services, nor should it be used as a basis for any decision or action that may affect your business. Before making any decision or taking any action that may affect your business, you should consult a qualified professional advisor.

Deloitte shall not be responsible for any loss sustained by any person who relies on this publication.

As used in this document, "Deloitte" means Deloitte & Touche LLP, a subsidiary of Deloitte LLP. Please see www.deloitte.com/us/about for a detailed description of our legal structure. Certain services may not be available to attest clients under the rules and regulations of public accounting.