



## Business Process Solutions Tailor-made managed services. World-class technologies.



Deloitte refers to one or more of Deloitte Touche Tohmatsu Limited, a UK private company limited by guarantee, and its network of member firms, each of which is a legally separate and independent entity. Please see [www.deloitte.com/about](http://www.deloitte.com/about) for a detailed description of the legal structure of Deloitte Touche Tohmatsu Limited and its member firms.

Deloitte provides audit, tax, consulting and financial advisory services to public and private clients spanning multiple industries. With a globally connected network of member firms in more than 150 countries, Deloitte brings world-class capabilities and high-quality service to clients, delivering the insights they need to address their most complex business challenges. The more than 200 000 professionals of Deloitte are committed to becoming the standard of excellence.

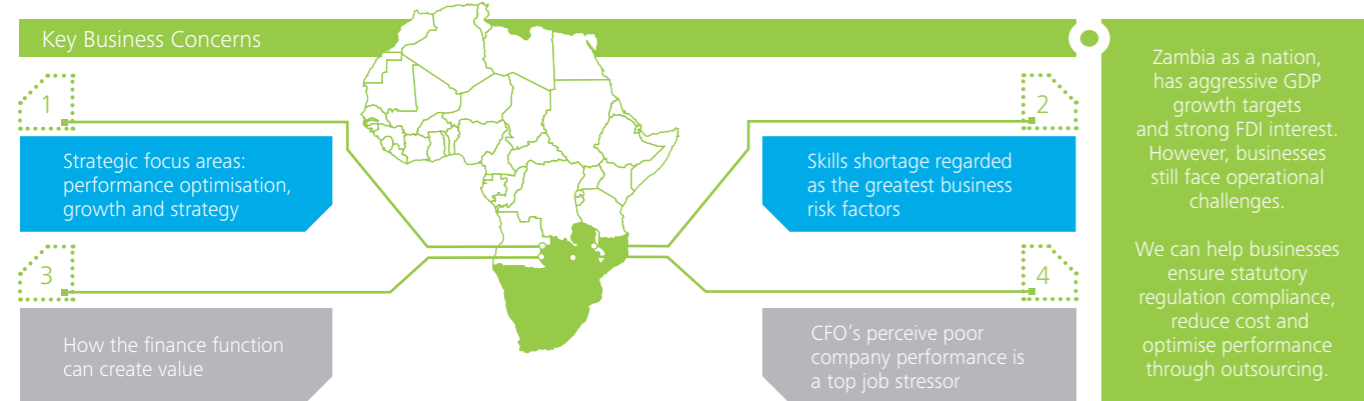
This communication contains general information only, and none of Deloitte Touche Tohmatsu Limited, its member firms, or their related entities (collectively, the "Deloitte Network") is, by means of this communication, rendering professional advice or services. No entity in the Deloitte Network shall be responsible for any loss whatsoever sustained by any person who relies on this communication.

## Doing business in Zambia

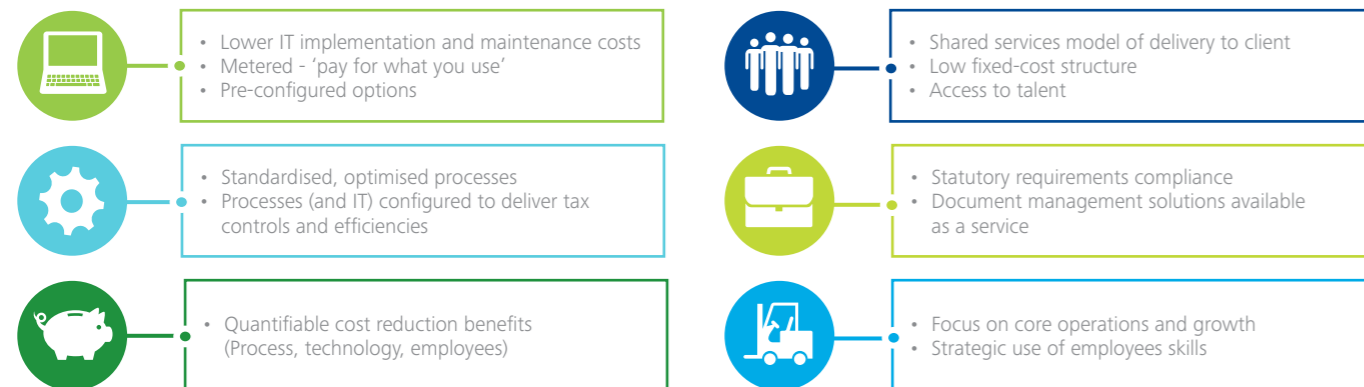


## Outcomes from the 2013 Deloitte CFO Survey

Key CFO concerns in Southern Africa.



## What are the benefits of outsourcing?



## Key components of Deloitte Africa's outsourcing proposition

We manage business processes across a number of industries enabled by people and technology.



## Outsourcing in Zambia



Contact us:



**Clare Nkweto Simmonds**  
 Assoc Director  
 +260 961 871 393  
 csimmonds@deloitte.com



**John Woods**  
 Partner  
 +260 966 800 222  
 jowood@deloitte.com